

## Installation Instructions

### Introduction

Thank you for purchasing the engineering software, MELSOFT MX series.

This document explains how to install and uninstall the product. Please read carefully before installing the product to your personal computer.

## Installation

Install the product to the personal computer.

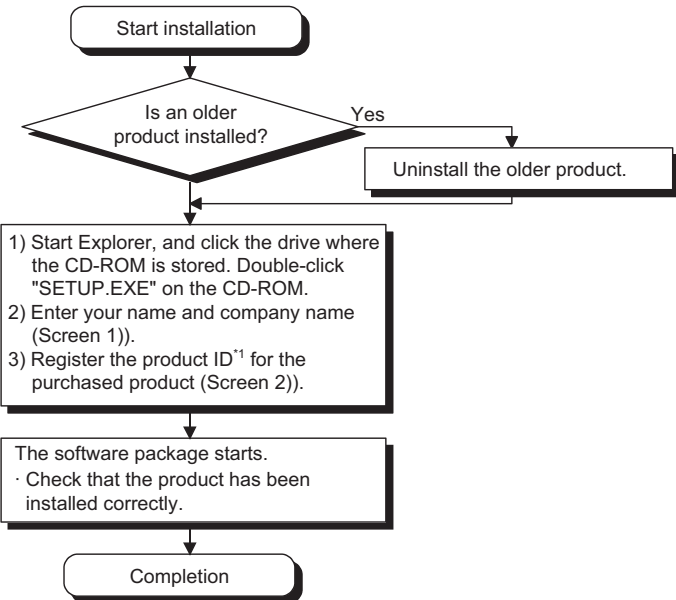
### Confirm before installation

- Log on to the personal computer as a user having the "Administrator" (computer administration) privilege.
- Close all the applications running under Microsoft® Windows® Operating System before installation. If the product is installed while other applications are running, it may not operate normally.

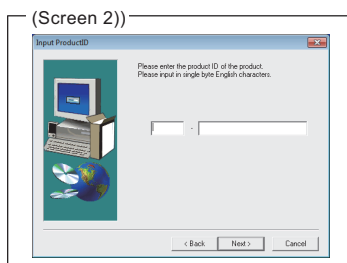
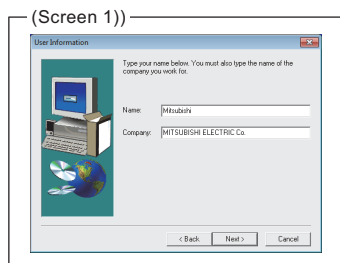
- Insert the CD-ROM to the CD-ROM drive.  
Double click the "SETUP.EXE" file on the CD-ROM.
- Following the on-screen instructions, select or enter the necessary information.

### Point

- Serial number is written on the "License certificate" included with the product. Enter the 12-digit number divided into 3 and 9 digits.
- For details of installation, refer to the manual on the CD-ROM included with the product.
- When installing MELSOFT to a Windows Vista®, Windows® 7, Windows® 8, Windows® 8.1 and Windows® 10 based personal computer, read the technical bulletin FA-A-0008, FA-A-0091, FA-A-0153, and FA-A-0207 respectively.



\*1: Enter a serial number written on the "License certificate" with dividing 12-digit number into 3 and 9 digits.

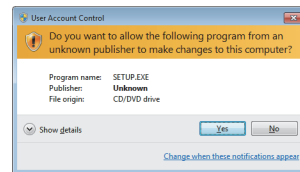


### Notice

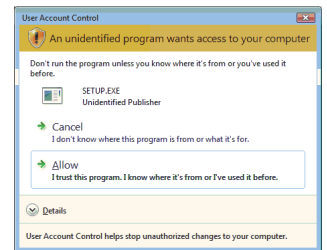
- Reprinting or reproducing the part or all of the contents of this document in any form for any purpose without the permission of Mitsubishi Electric Corporation is strictly forbidden.
- Although we have made the utmost effort to follow the revisions of the software and hardware, in some cases, unsynchronized matter may occur.
- The information in this document may be subject to change without notice.

- If the confirmation screen appears during the installation, continue the installation according to the instruction on the screen.
- If any of the following screens appears, perform the operation instructed for respective screens.  
(Screen 3) Click the **Yes** button or "Allow".

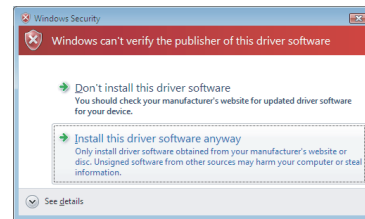
<Windows® 7, Windows® 8, Windows® 8.1 and Windows® 10>



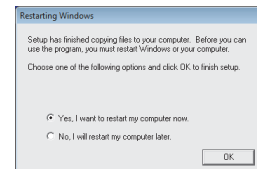
<Windows Vista®>



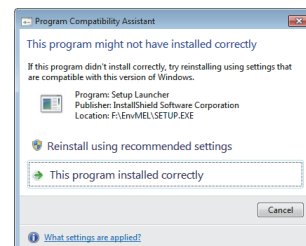
(Screen 4) Select "Install this driver software anyway".



- The following screens may appear after the installation is completed.  
(Screen 5) Restart the personal computer according to the instruction on the screen.



(Screen 6) Select "This program installed correctly".  
If "Reinstall using recommended settings" is selected, an incorrect module is installed.



## Product Makeup

### MX Component

Model name	Product name	Quantity
SW4DNC-ACT-E (English version package)  (Standard license product)	MX Component CD-ROM	1
	Installation Instructions (This document)	1
	End-user software license agreement	1
	Software registration notice	1
	License certificate	1
SW4DNC-ACT-EA (English version package)  (Volume license product)	MX Component CD-ROM	1
	Installation Instructions (This document)	1
	End-user software license agreement	1
	Software registration notice	1
	License certificate	n*1

\*1 : Number of licenses

### MX Sheet

Model name	Product name	Quantity
SW2DNC-SHEET-E (English version package)  (Standard license product)	MX Sheet CD-ROM	1
	Installation Instructions (This document)	1
	End-user software license agreement	1
	Software registration notice	1
	License certificate	1
SW2DNC-SHEET-EA (English version package)  (Volume license product)	MX Sheet CD-ROM	1
	Installation Instructions (This document)	1
	End-user software license agreement	1
	Software registration notice	1
	License certificate	n*1

\*1 : Number of licenses

## Acknowledgements

- We do not guarantee those commercially available Microsoft® Windows® Operating System products that are introduced in this manual.
- This software's copyright is owned by Mitsubishi Electric Corporation.
- This product (including manual) can be used under the Software License Agreement only.
- We do not take any responsibilities for the consequences of operating this product (including manual).

Model name	Product name	Quantity
SW2DNC-SHEETSET-E (English version package)	MX Component CD-ROM	1
	MX Sheet CD-ROM	1
	Installation Instructions (This document)	1
	End-user software license agreement	2
	Software registration notice	1
	License certificate	2

## Installation of USB driver

In order to communicate with a programmable controller CPU via USB, a USB driver needs to be installed.

For a USB driver installation procedure, refer to MX Component Version 4 Operating Manual.

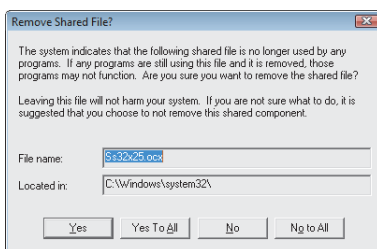
## Uninstallation

Delete the product from the personal computer.

### 1. Uninstall the product from the control panel of Windows.

#### Point

- Uninstalling deletes all the settings within "Communication Setup Utility". To avoid this, export the file storing the settings.
- If the following screen appears during the uninstallation procedure, click the  button.



Microsoft, Windows, Windows Vista are registered trademarks or trademarks of Microsoft Corporation in the United States and other countries. The company names, system names and product names mentioned in this manual are either registered trademarks or trademarks of their respective companies. In some cases, trademark symbols such as "™", "®" are not specified in this manual.