

MELSEC Q Series

Programmable Logic Controller

Programming Guide Book
(Structured Text (ST))

Q Series

• SAFETY PRECAUTIONS •

(Always read these instructions before using this equipment.)

Before using this product, please read this manual and the relevant manuals introduced in this manual carefully and pay full attention to safety to handle the product correctly.

The instructions given in this manual are concerned with this product. For the safety instructions of the programmable controller system, please read the CPU module user's manual.

In this manual, the safety instructions are ranked as "DANGER" and "CAUTION".




DANGER

Indicates that incorrect handling may cause hazardous conditions, resulting in death or severe injury.



CAUTION

Indicates that incorrect handling may cause hazardous conditions, resulting in medium or slight personal injury or physical damage.

Note that the  CAUTION level may lead to a serious consequence according to the circumstances. Always follow the instructions of both levels because they are important to personal safety.

Please save this manual to make it accessible when required and always forward it to the end user.

[Designing Precautions]

DANGER

- For data change, program change and status control to be performed for the running programmable logic controller from a personal computer, configure interlock circuits in the outside of the PLC system so that the whole system will always operate safely. Also, for online operations to be performed from the personal computer to the PLC CPU, predetermine as a system the corrective actions for communication errors that will occur due to poor cable connection, etc.

[Startup/Maintenance Precautions]

CAUTION

- Before performing online operations (program change during PLC CPU RUN, forced I/O operation, RUN-STOP or similar operating condition change, remote operation) with the personal computer connected to the running PLC CPU, read the manual carefully and ensure safety fully. Note that program change during PLC CPU RUN (online change) may cause such problems as program corruption depending on the operation condition. Use the equipment after fully understanding the precautions given in the GX Developer Operating Manual.

REVISIONS

* The manual number is given on the bottom left of the back cover.

Print Date	* Manual Number	Revision
Feb., 2003	IB (NA)-0800248E-A	First printing
Jul., 2003	IB (NA)-0800248E-B	Correction Section 5.3
Oct., 2003	IB (NA)-0800248E-C	Correction Section 5.2

Japanese Manual Version SH-080365-D

This manual confers no industrial property rights or any rights of any other kind, nor does it confer any patent licenses. Mitsubishi Electric Corporation cannot be held responsible for any problems involving industrial property rights which may occur as a result of using the contents noted in this manual.

© 2003 MITSUBISHI ELECTRIC CORPORATION

INTRODUCTION

Thank you for choosing the Mitsubishi MELSOFT series Integrated FA software.
Read this manual and make sure you understand the functions and performance of MELSEC series sequencer thoroughly in advance to ensure correct use.
Please make this manual available to the end user.

CONTENTS

SAFETY PRECAUTIONS.....	A- 1
REVISIONS	A- 2
CONTENTS.....	A- 4
About Manuals	A- 5
How to Use This Manual.....	A- 6
About the Generic Terms and Abbreviations Used in This Guidebook	A- 7
1 OVERVIEW	1- 1 to 1- 2
2 ST PROGRAM CREATION PROCEDURE	2- 1 to 2- 2
3 ST PROGRAMMING	3- 1 to 3- 16
Creating a new ST project	3- 1
Defining the labels.....	3- 3
Entering a program.....	3- 8
Converting (compiling) the ST program	3-14
4 READ/WRITE FROM/TO PLC CPU	4- 1 to 4- 2
5 DEBUGGING THE PROGRAM	5- 1 to 5- 7
5.1 Monitoring the Sequence Program.....	5- 1
5.2 Device Test.....	5- 2
5.3 Online Change	5- 4
6 SAVING THE PROGRAM INTO THE PERSONAL COMPUTER	6- 1 to 6- 2
7 INTRODUCTION TO USEFUL FUNCTIONS FOR ST PROGRAM EDITING	7- 1 to 7- 2

8 ST PROGRAMMING APPLICATION (PASTING FB TO LADDER PROGRAM)	8- 1 to 8- 20
---	---------------

8.1 Creating an FB	8- 1
Creating a new project	8- 1
Adding a new FB	8- 2
Defining FB variables	8- 5
Creating an FB in ST language	8- 9
8.2 Pasting the FB to a Main Program	8-11
Defining the local variables	8-11
Creating a main program	8-13
8.3 Online	8-16
Writing to PLC CPU.....	8-16
Monitoring the sequence program.....	8-17
Confirming the program behavior	8-18

Index	Index- 1 to Index- 2
-------	----------------------

About Manuals

The following manuals are also related to this product.
In necessary, order them by quoting the details in the tables below.

Related Manuals

Manual Name	Manual Number (Model Code)
GX Developer Version8 Operating Manual (Startup) Explains the system configuration, installation method and startup method of GX Developer. (Option)	IB-0800242E
GX Developer Version8 Operating Manual Explains the program creation method, printout method, monitoring method, debugging method, etc. using GX Developer. (Option)	IB-0800243E
GX Developer Version8 Operating Manual (Structured Text) Explains the operation methods for creating structured text programs. (Option)	IB-0800247E
GX Developer Version8 Operating Manual (Function Block) Explains the program creation method, printout method, etc. using GX Developer. (Option)	IB-0800246E
QCPU (Q mode) Programming Manual (Structured Text) Explains the programming methods in structured text language. (Option)	SH-080366E (13JF68)
QCPU (Q mode)/QnACPU Programming Manual (Common Instructions) Explains the methods of using the sequence instructions, basic instructions and application instructions. (Option)	SH-080039 (13JF58)

REMARK

Each Operating Manual is contained in the CD-ROM together with the software package as a set.

The Programming Manual is available separately in printed form as an option.

Please place an order with the manual number (model code) in the above table.

How to Use This Manual

This Guidebook ...

This guidebook is a commentary written for those who will use the GX Developer Version 8 software package (hereafter abbreviated to GX Developer) to create structured text (hereafter abbreviated to ST) programs for the first time.

"Chapter 1" introduces the overview of the ST language and the features of the ST language in the MELSEC-Q series.

"Chapter 2 to Chapter 6" introduce a series of basic operation methods, such as the methods of creating, debugging and saving programs in ST language through sample programs.

"Chapter 7" introduces useful functions available from GX Developer.

"Chapter 8" introduces the method of creating a program, which uses an ST-written function block (FB) in a ladder program from the main program created in ladder form, as an application program.

"Chapters 4, 5 and 8" use the PLC CPU for explanation.

Programming Manual ...

Use the "QCPU (Q mode) Programming Manual (Structured Text)" to perform structured text (ST) programming with GX Developer. It is suitable for the users who have the knowledge and programming experience of PLC ladder programs and for the users who have the knowledge and programming experience of high-level languages such as the C language.

Operating Manual ...

The "GX Developer Version 8 Operating Manual (Structured Text)" is a commentary that gives in-depth explanation of the operation methods for creating structured text programs using GX Developer. Refer to the manual when information on operations details is necessary.

When information on other than structured text programming is necessary ...



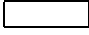

Refer to the "GX Developer Version 8 Operating Manual" or "GX Developer Version 8 Operating Manual (Startup)".

About the Generic Terms and Abbreviations Used in This Guidebook

In this guidebook, the following generic terms and abbreviations are used to represent the GX Developer software package and PLC CPU. The package name is given when the target model name must be pointed out explicitly.

Generic Terms and Abbreviations	Description/ target unit
ST	Stands for structured text.
FB	Stands for function block.
GX Developer	Generic product name for model names SWnD5C-GPPW, SWnD5C-GPPW-A, SWnD5C-GPPW-V and SWnD5C-GPPW-VA. n means Version 8 or later.
QCPU (Q mode)	Generic term for Q00(J)CPU, Q01CPU, Q02(H)CPU, Q06HCPU, Q12HCPU, Q25HCPU, Q12PHCPU and Q25PHCPU.

The following explains the symbols and information used in this guidebook.

Symbol	Description	Example
Point	Gives the section-related knowledge and useful information.	
[]	Menu name of menu bar	[Project]
()	Icon of toolbar	
<< >>	Tab name of dialog box	<<Select file>>
	Command button of dialog box	

What is the ST language ... ?

The ST language is defined in the International Standard IEC61131-3 that stipulates the logic description system in open controllers.

The ST language supports operators, control syntaxes and functions to permit the following descriptions.

- Control syntaxes such as conditional sentence-dependent selective branch and repetitive sentence-based repetition
- Expressions using operators (*, /, +, -, <, >, =, etc.)
- Call of user-defined function blocks (FB)
- Call of functions (MELSEC functions, IEC functions)
- Description of comments

What are the features ... ?

The following introduces the main features of ST programs in the MELSEC-Q series.



Design efficiency improved by defining processings as parts.

With often used processings defined as parts in the form of function blocks (FB) in ST language, they can be used in necessary areas of each program.

This not only enhances the efficiency of program development but also reduces program mistakes, improving program quality.



Program change during system operation (online change).

Part of a running program can be changed without the PLC CPU being stopped.



Connection with other language programs.

Since other languages than the ST are also supported, the language adequate for processing can be used to increase the efficiency of program development.

For example, write sequence control in a ladder program, and operation processing in ST language.

Multiple languages support widespread application under optimum control.

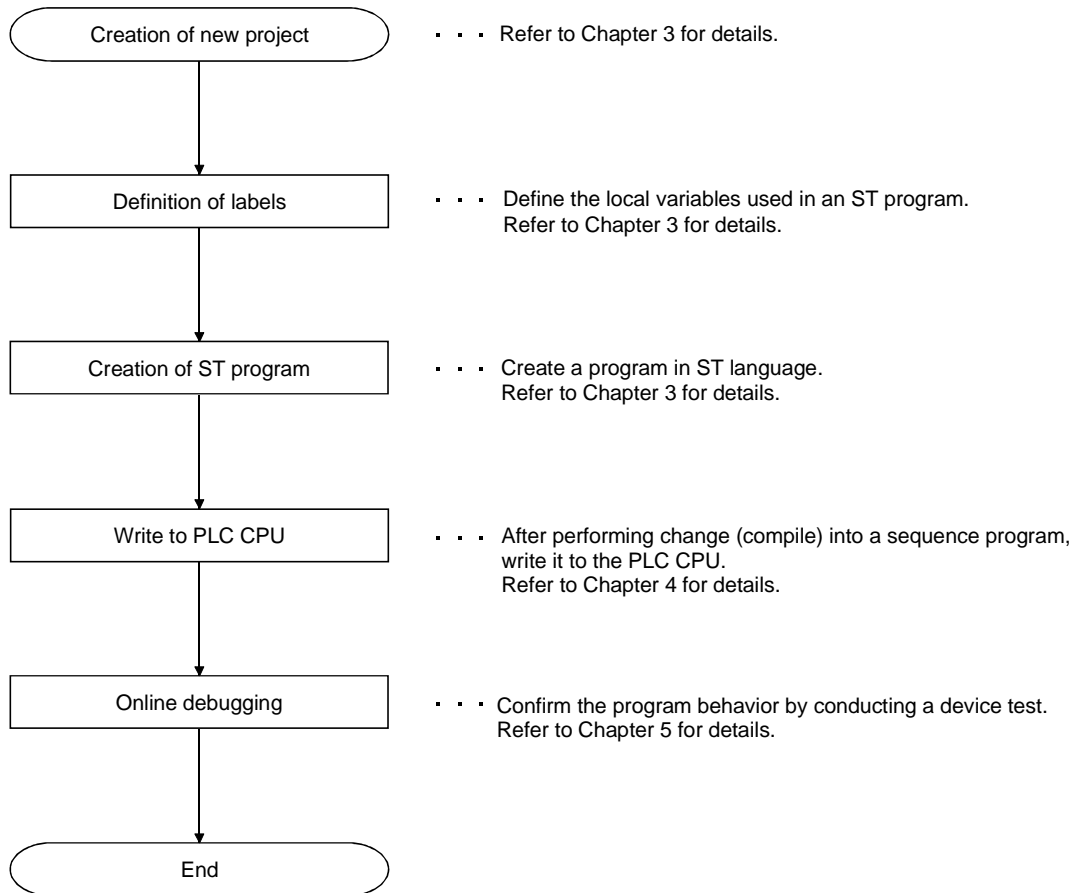


A wealth of functions available.

The MELSEC functions compatible with various common instructions for the MELSEC-Q series and the IEC functions defined in IEC61131-3 are available for ST programs.

The following flowchart indicates the basic procedure from ST program creation to online debugging.

In the following example, programming was performed using only an ST program.



REMARK

For details of each operation, refer to the "GX Developer Operating Manual" given in Relevant Manuals.

Chapter 3 explains general basic operations from the input to convert (compile) of an ST program. The following items will be explained in this chapter.

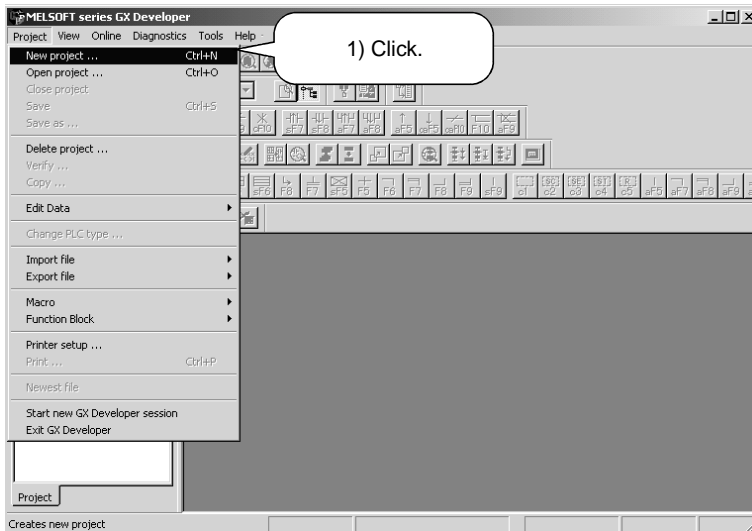
- ☞ Creating a new ST project.
- ☞ Defining the labels to be used in an ST program.
- ☞ Creating an ST program.
- ☞ Converting (compiling) the created ST program into an executable sequence program.
- ☞ Correcting the program if a convert (compile) error occurs.

Creating a new ST project.

3

Creating a new ST project

The operation method to create a new project will be explained.

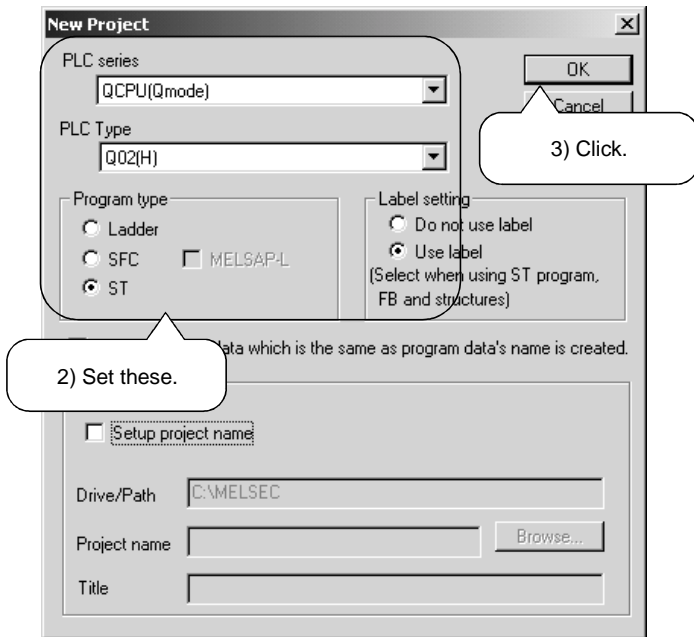


1) Click [Project] → [New project] in the menu.

↓
To next page

From previous page

Set the New project dialog.



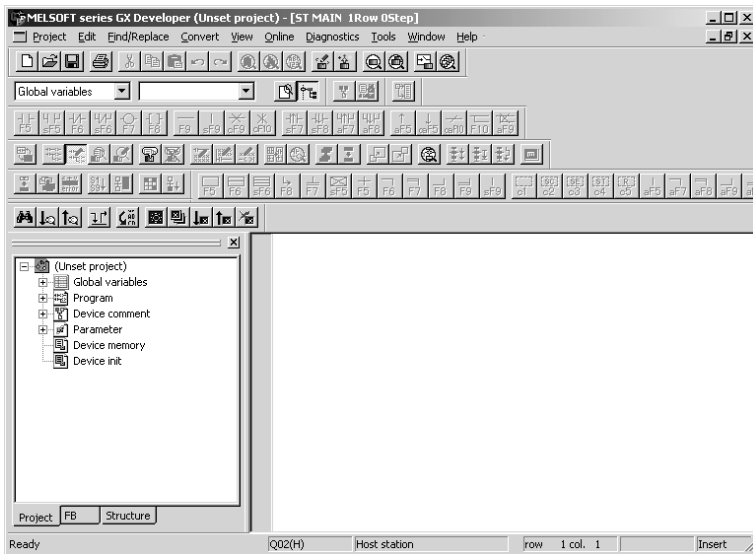
2) Enter as follows.

- PLC series : QCPU (Q mode)
- PLC Type : Q02 (H)
- Label setting : Use label
- Program type : ST

3) Click the **OK** button

3

↓



4) A new ST project is created.

* The ST edit screen opens and an ST program can be entered.

REMARK

Here, "Q02(H)" is set as the PLC type.

There are the following PLC CPU types that are applicable to ST programs.

Basic model QCPU	High performance model QCPU	Process CPU
Q00CPU Q00JCPU Q01CPU	Q02CPU Q02HCPU Q06HCPU Q12HCPU Q25HCPU	Q12PHCPU Q25PHCPU

Defining the labels

What does "defining the labels" mean?

To use labels, variables used as labels must be clarified. This is called "defining the labels". If a program that uses undefined labels is converted (compiled), an error occurs and a sequence program cannot be created.

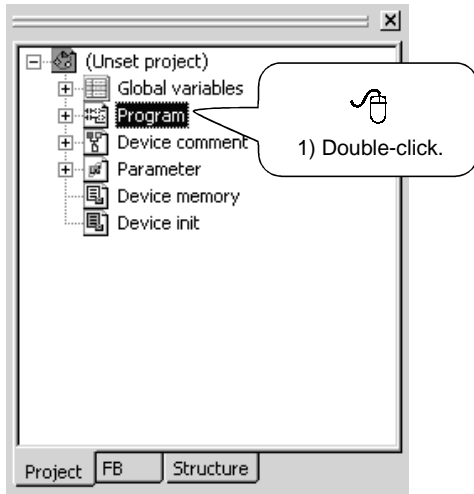
There are two different labels; global variables and local variables. The global variables can be used in the whole project. The local variables can be used in only the program where the labels have been defined.

Here, the local variables used in the program example that will be entered later will be actually defined.

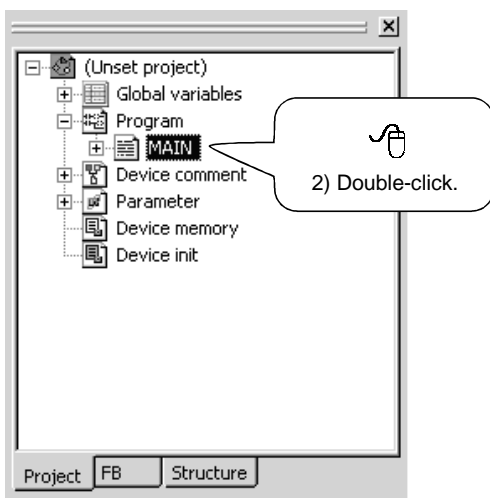
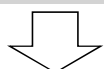
■ Displaying the Local variables setting screen

The operation method to define local variables will be explained.

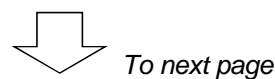
For the global variables, refer to the "GX Developer Operating Manual".



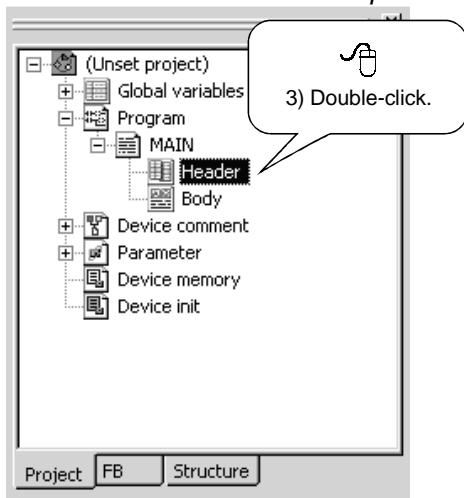
1) Double-click "Program" in the <<Project>> tab.



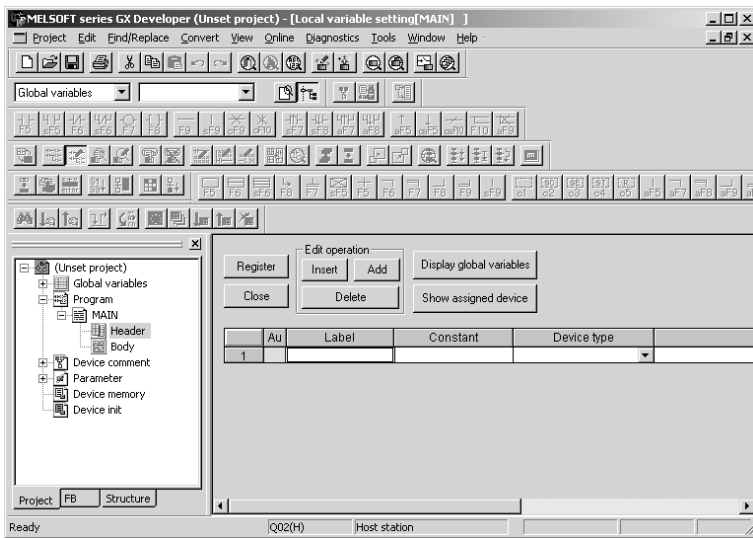
2) Double-click "MAIN".



From previous page



3) Double-click "Header".



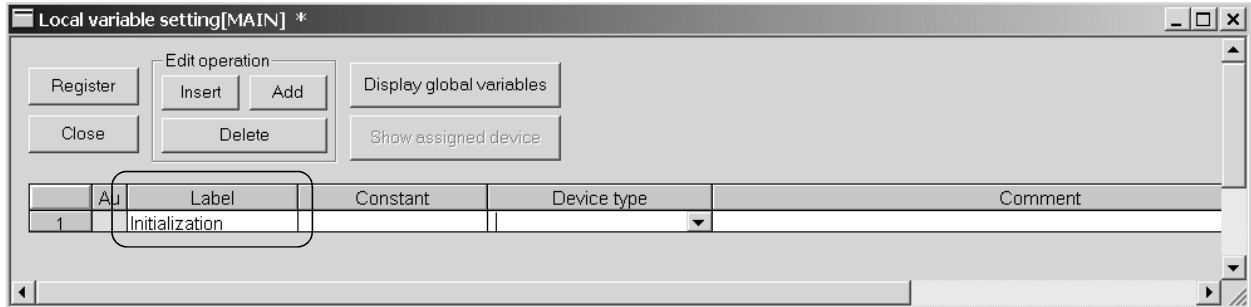
4) The Local variables setting screen is displayed.

■ Setting the local variables (Header)

1) Enter a label name.

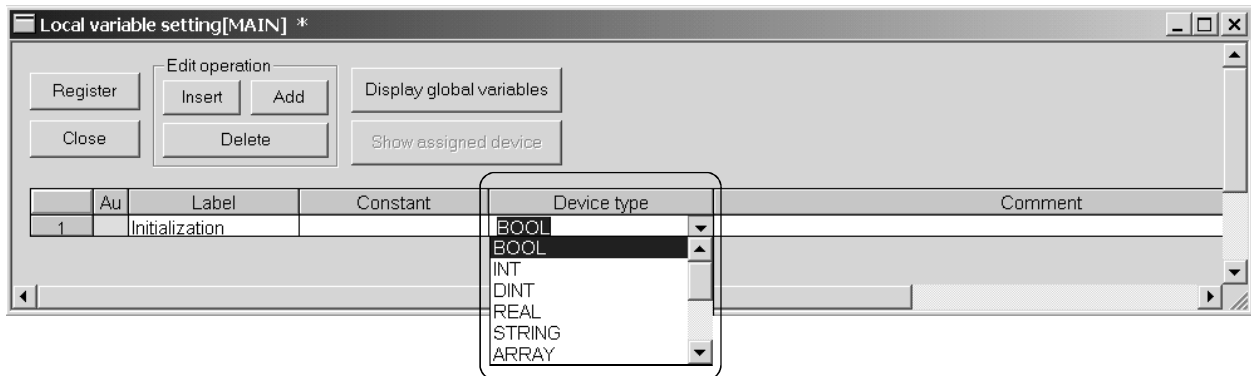
Enter a label name within 16 characters. The character strings that cannot be used as a label name are reserved words and actual devices. Enter other labels.

* For the reserved words, refer to the "GX Developer Operating Manual".



2) Enter a device type.

Enter it directly or make selection from the list box.

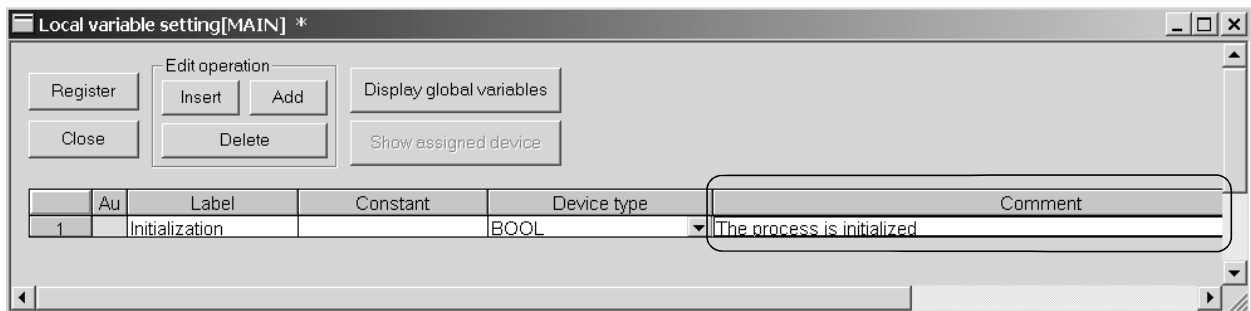


3) Enter a comment into the label.

Enter it within 64 characters.

The comment can be displayed in the tool tip format of the label information.

* For the label information, refer to "CHAPTER 7 INTRODUCTION TO USEFUL FUNCTIONS FOR ST PROGRAM EDITING" or "GX Developer Operating Manual (Structured Text)".



To next page

↓
From previous page

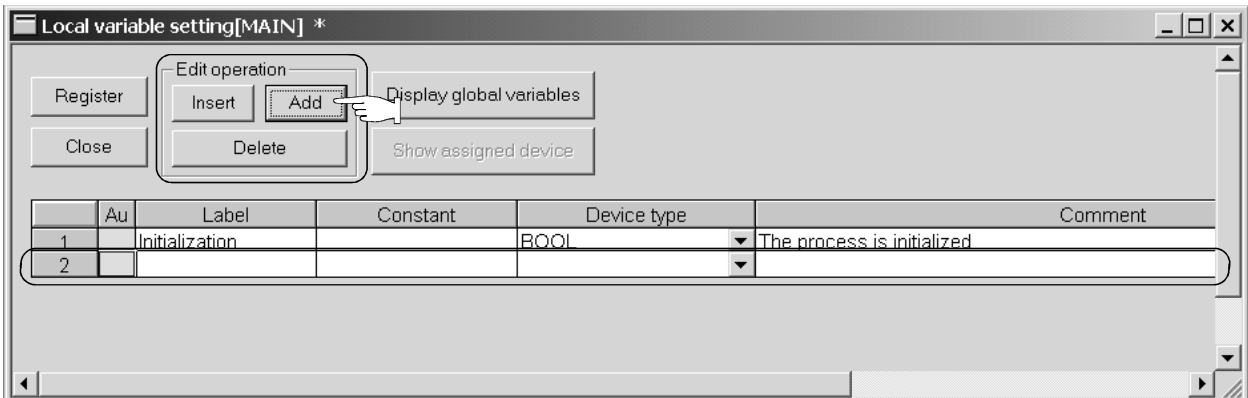
4) When entering labels continuously, click the **Insert** or **Add** button under Edit operation to add a line.

The buttons under Edit operation have the following functions.

Insert button ... Inserts a blank line into the current cell position.

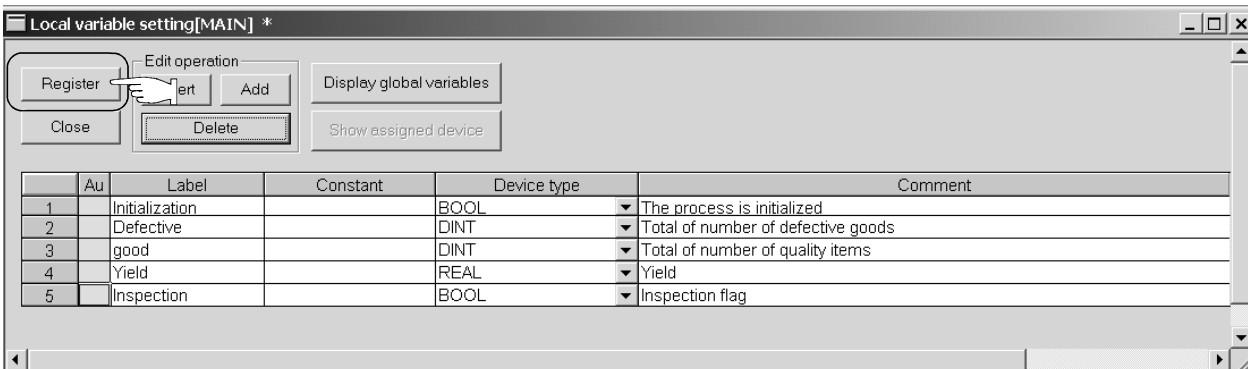
Add button Inserts a blank line into the place one line below the current cell position.

Delete button ... Deletes one line in the current cell position.

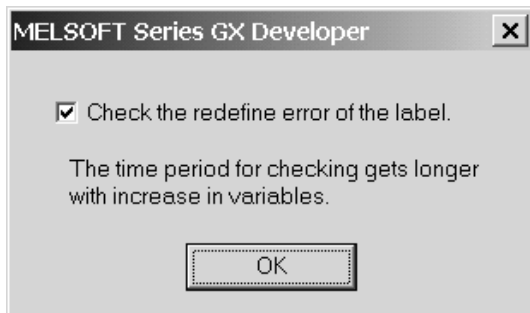


↓

5) After input is complete, click the **Register** button.



↓



Click the **OK** button.

↓
To next page

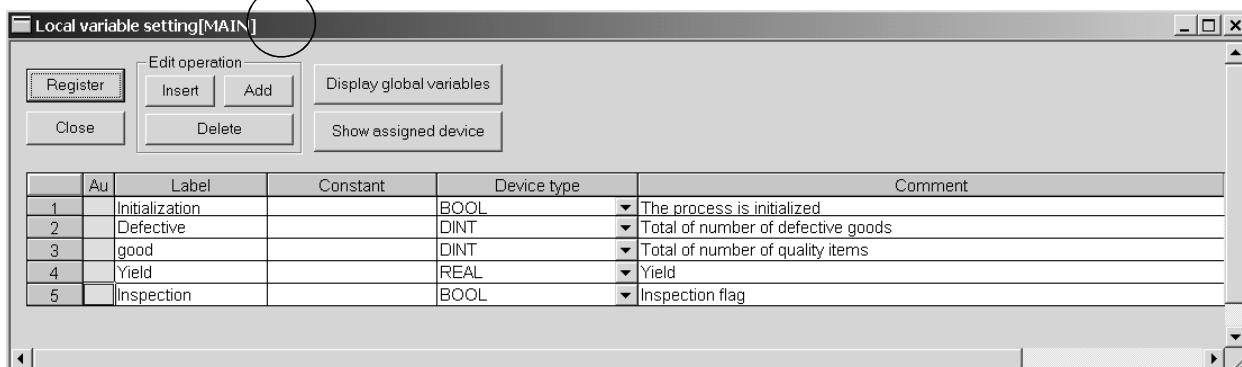
From previous page



Registration is completed.

Click the **OK** button.

When registration is made, "*" displayed on the title bar disappears.



REMARK

For details of the local variables, refer to the "GX Developer Operating Manual" given in Relevant Manuals.

Entering a program

What should be noted during input?

A program can be input freely in text format using the ST edit screen. Note the following points during input.

- Use a space, `Tab` key or `Enter` key to enter a blank.
- When the defined label, control syntax or comment is input, the character color changes.
If it does not change, the possible cause is an input mistake or undefined label.

Now, actually input a program in List-1.

List-1.

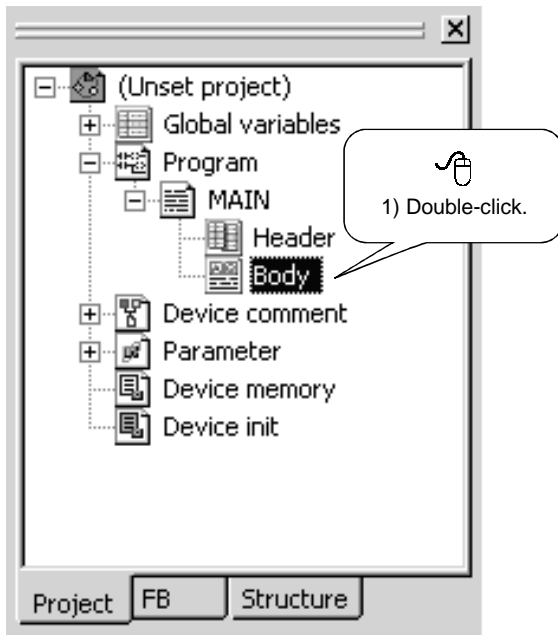
```
IF      Initialization THEN
    good := 0; Defective := 0; Yield := 0.0;

ELSE
    IF Inspection THEN
        good := good + 1;

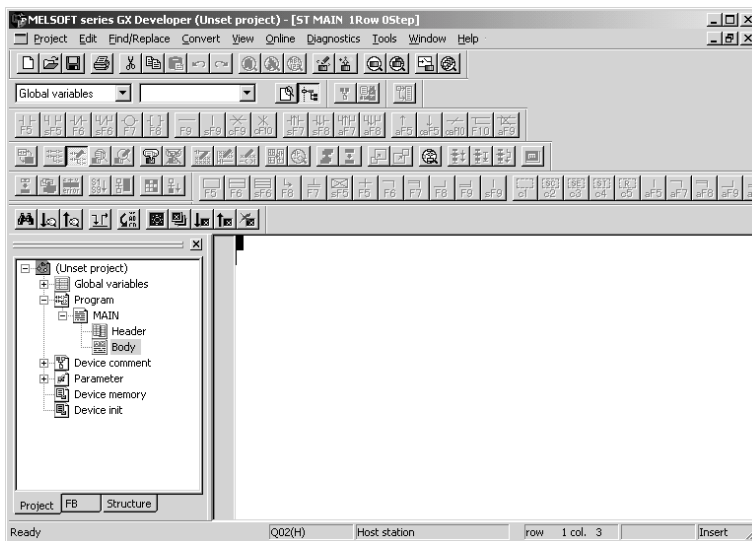
    ELSE
        Defective := Defective + 1;
    END_IF;

    Yield := DINT_TO_REAL(good)/DINT_TO_REAL(good + Defective);
END_IF;
```

■ Displaying the ST edit screen



1) Double-click "Body" in the <<Project>> tab.



2) The ST edit screen is displayed.

■ Entering the characters



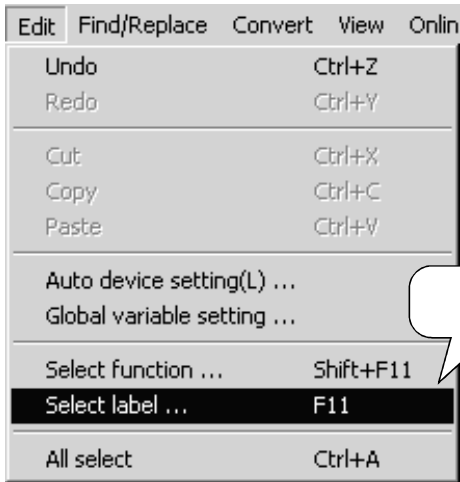
Enter "IF".

* If entered in lower case, a control syntax is converted automatically into upper case.

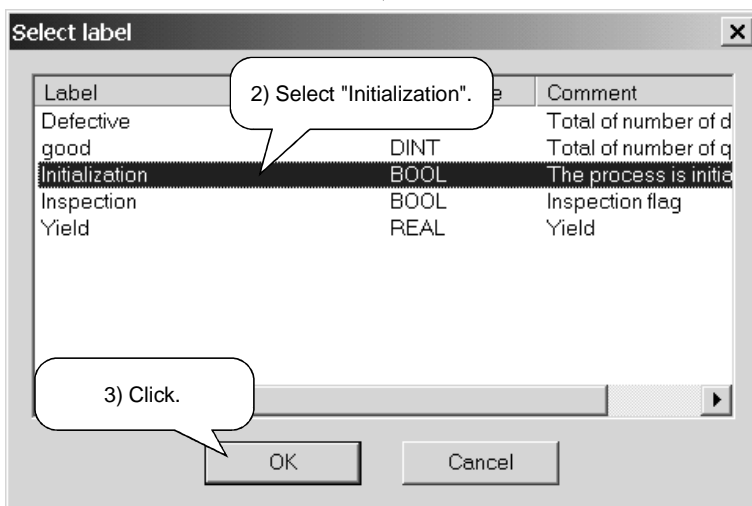
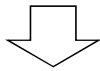
■ Entering a label

To enter a label, a label name may be entered directly or the label selection function be used.
 To use the label selection function, labels must have been entered in advance.

Here, the input method using the label selection function will be explained.

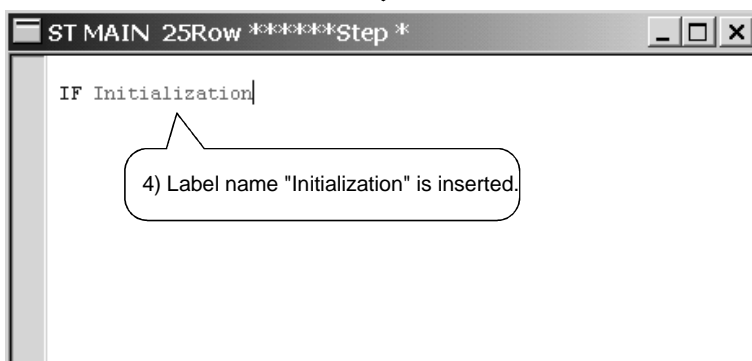
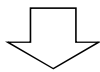


1) Click [Edit] → [Select label] in the menu.



2) Select the label to be entered.

3) Click the **OK** button.

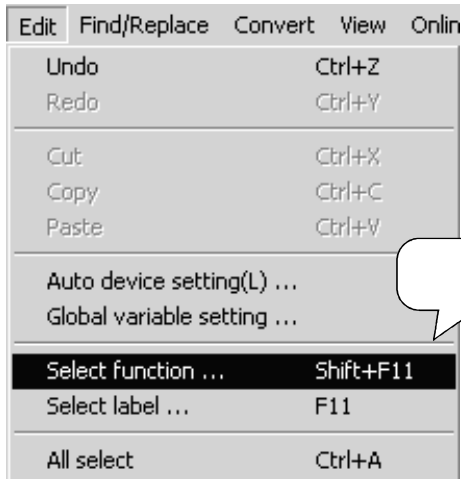


4) The label is inserted.

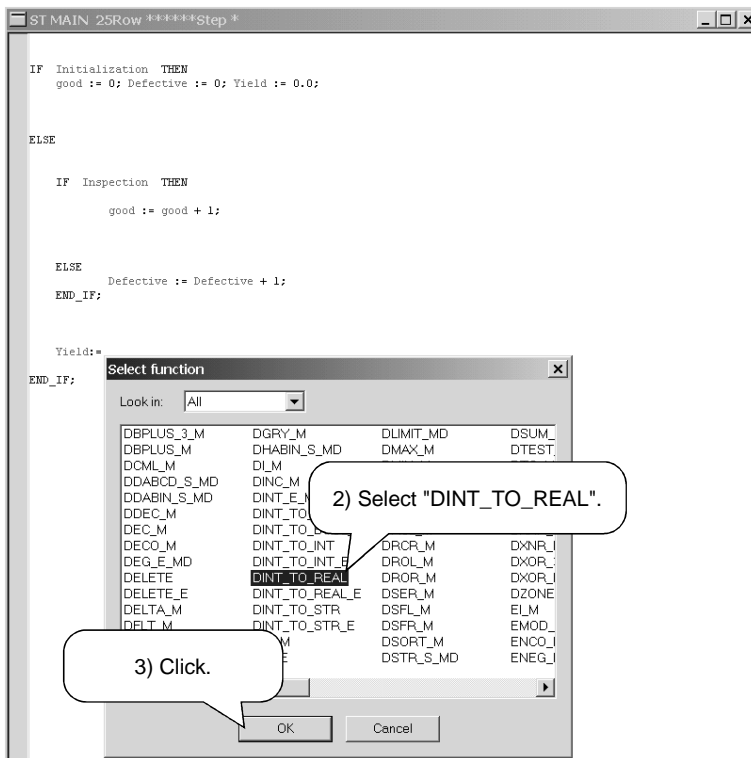
■ Entering a function

Enter a function in upper case. To enter, a function may be entered directly or the function selection function be used.

Here, the input method using the function selection function will be explained.



1) Click [Edit]→[Select function] in the menu.



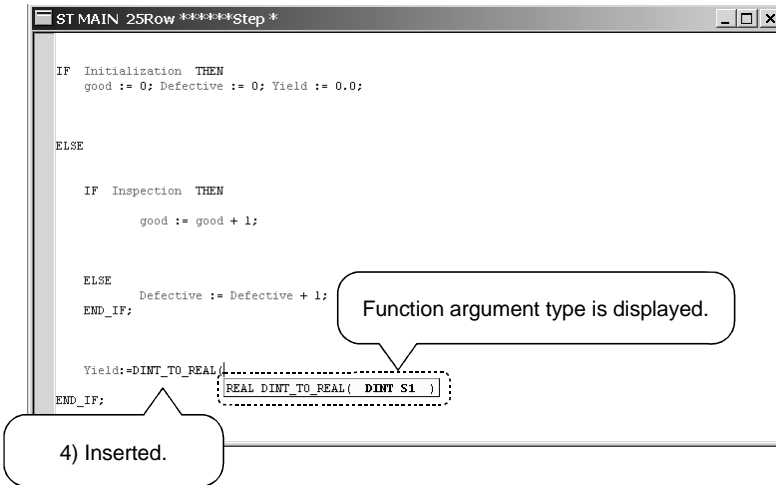
2) Select the label to be entered.

3) Click the **OK** button.



To next page

From previous page



```

ST MAIN 25Row *****Step *
IF Initialization THEN
  good := 0; Defective := 0; Yield := 0.0;
ELSE
  IF Inspection THEN
    good := good + 1;
  ELSE
    Defective := Defective + 1;
  END_IF;
  Yield:=DINT_TO_REAL( REAL DINT_TO_REAL( DINT S1 ) );
END_IF;
    
```

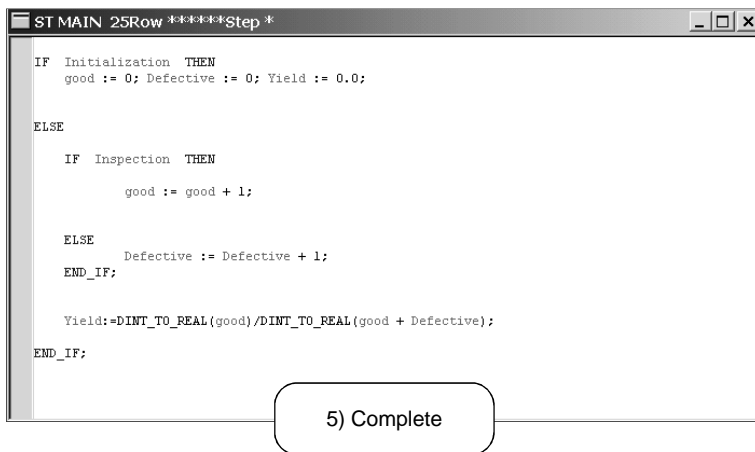
4) Inserted.

Function argument type is displayed.

4) The function name is inserted.

* The function argument type is displayed in the tool tip format.

To next page



```

ST MAIN 25Row *****Step *
IF Initialization THEN
  good := 0; Defective := 0; Yield := 0.0;
ELSE
  IF Inspection THEN
    good := good + 1;
  ELSE
    Defective := Defective + 1;
  END_IF;
  Yield:=DINT_TO_REAL(good)/DINT_TO_REAL(good + Defective);
END_IF;
    
```

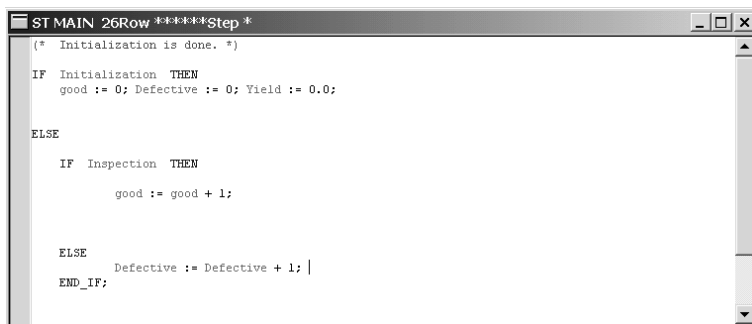
5) Complete

5) Refer to the function argument type displayed in the tool tip format, and enter the argument to complete the entry.

■ Entering a comment

Comments do not affect the program behavior at all. When program processings are described as comments, they give the at-a-glance pictures of the processings.

First, enter a comment on Line 1 of the program.



```

ST MAIN 26Row *****Step *
(* Initialization is done. *)
IF Initialization THEN
  good := 0; Defective := 0; Yield := 0.0;
ELSE
  IF Inspection THEN
    good := good + 1;
  ELSE
    Defective := Defective + 1;
  END_IF;
    
```

* Enter a comment by enclosing it with "(" that represents the beginning of the comment and ")" that represents an end.

To next page

↓
From previous page

```

ST MAIN 25Row *****Step *
(* Initialization is done. *)
IF Initialization THEN
  good := 0; Defective := 0; Yield := 0.0;
(* The normal operation is processed. *)
ELSE
  (* Is the inspection passing? *)
  IF Inspection THEN
    good := good + 1; (* The number of non-defective articles is added. *)
    (* The inspection is failing. *)
  ELSE
    Defective := Defective + 1; (* The number of defective goods is added. *)
  END_IF;
  (* The yield is calculated. *)
  Yield:=DINT_TO_REAL(good)/DINT_TO_REAL(good + Defective);
END_IF;
    
```

Refer to the example given on the left and enter comments. (List-2)

This completes program input.

Point

- Display of label information
The label information can be displayed in the tool tip format.
Operation : Place the mouse pointer in the label position.
Display : Label name -> Label type -> Label comment -> Device *
*: The device is displayed after convert (compile) is performed.

```

ST MAIN 25Row 143Step
(* Initialization is done. *)
IF Initialization THEN
  good := 0; Defective := 0; Yield := 0.0;
(* The normal operation is processed. *)
ELSE
  (* Is the inspection passing? *)
  IF Inspection THEN
    good := good + 1; (* The number of non-defective articles is
    good->LOCAL->Total of number of quality items->D12284
    (* The inspection is failing. *)
  ELSE
    Defective := Defective + 1; (* The number of defective goods is add
    
```

Label information is displayed.

- Change of display color
Control syntax, comment and label character string colors, ST edit screen background color, etc. can be changed.
Operation: Choose [Tools] → [Change display color] in the menu.
- Setting of auto indent
Indentation at the time when the **Enter** key is pressed and the Tab width at the time when the **Tab** key is pressed can be set.
Operation: Choose [Tools] → [ST editor settings] in the menu.
For details, refer to the "GX Developer Operating Manual (Structured Text)".

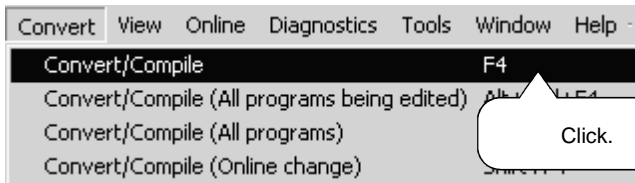
Converting (compiling) the ST program

What is convert (compile)?

Changing the program created on the ST edit screen into a sequence program that can be executed by the PLC CPU is called convert (compile).

■ Performing convert (compile)

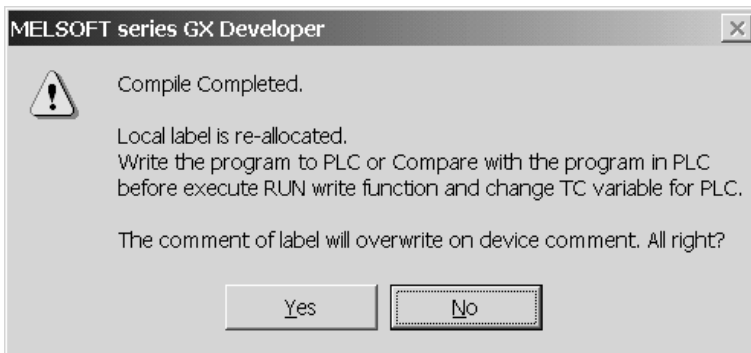
The convert (compile) operation method will be explained using the created program.



1) Click [Convert] → [Convert/Compile] in the menu.

(1) At normal completion

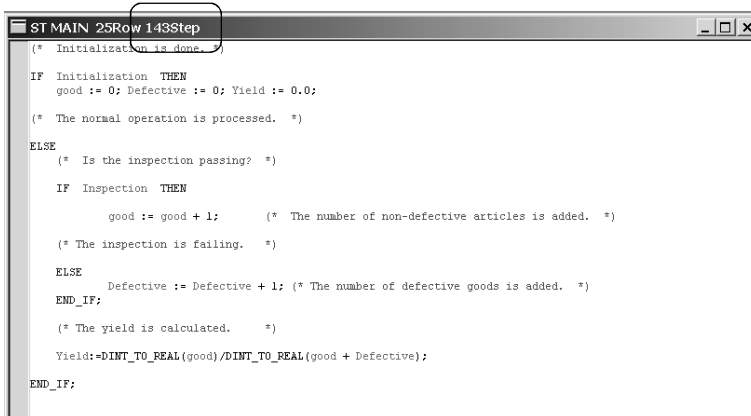
The following message is displayed.



Convert (compile) is completed.

Since the confirmation screen shown on the left is displayed, click the **No** button.

If the **Yes** button is clicked, the "Comment data to be referred to (comment by program) does not exist" message may be displayed.



* At normal completion of convert (compile), the number of steps is displayed on the title bar.

(2) When error occurs

The Compile error (Detail) dialog is displayed.

Now, actually see the debugging operation at occurrence of a compile error.

1) Change the program so that a compile error will occur.

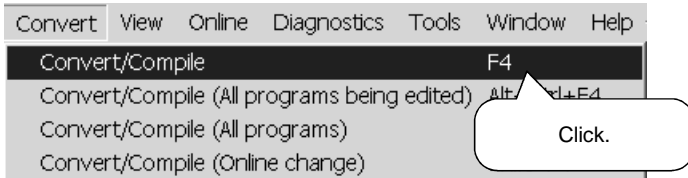
```

ST MAIN 25Row 143Step
(* Initialization is done. *)
IF Initialization THEN
* good := 0.0; Defective :=
(* The normal
ELSE
/* To the inspection part
    
```

Change Line 3 in List-2.

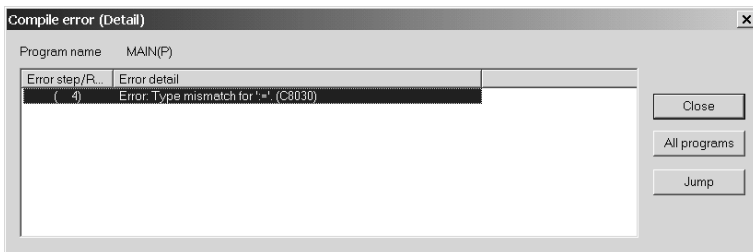
RYOUHIN := 0; → RYOUHIN := 0. 0;

2) Perform convert (compile).



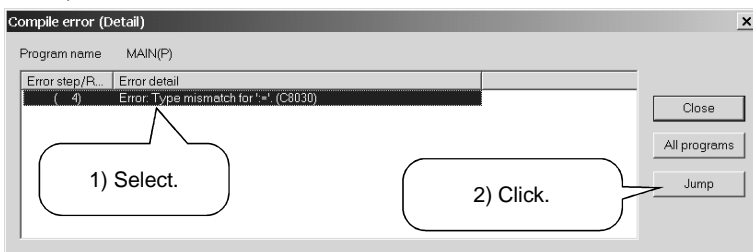
Click [Convert] → [Convert/Compile] in the menu.

3) A compile error occurs and the dialog is displayed.



Confirm the error step/line and error definition.

4) Confirm the line on which the error has occurred.



1) Select the error definition with the mouse.

2) Click the **Jump** button.

↓ To next page



5) Track down the cause and correct the faulty part.

The error indication mark is displayed on the ST edit screen.

Confirm the error definition and program contents, and correct the program.

```
ST MAIN 25Row *****Step *
(* Initialization is done. *)
IF Initialization THEN
good := 0.0; Defective := 0; Yield := 0.0;
The normal operation is processed. *)
Error indication mark *)
good := good + 1; (* The number of non-defective articles is added. *)
(* The inspection is failing. *)
ELSE
Defective := Defective + 1; (* The number of defective goods is added. *)
END_IF;
(* The yield is calculated. *)
Yield:=DINT_TO_REAL(good)/DINT_TO_REAL(good + Defective);
END_IF;
```

Correct Line 3 in List-2.

good := 0. 0; → good := 0;

Click [Convert] → [Convert/Compile] in the menu.



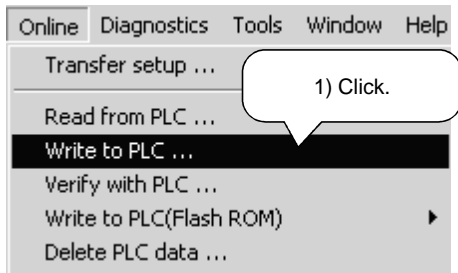
The error location and actually corrected part may be different. Identify the faulty part from the error definition displayed in the "Compile error (Detail)" dialog and the program contents of the line where the error indication mark is displayed.

Chapter 4 explains the procedure to write the converted (compiled) sequence program to the PLC CPU and the procedure to read the sequence program from the PLC CPU.

■ Performing write to PLC

The operation method for write to PLC will be explained.

Display the Write to PLC dialog and write the program and parameters to the PLC CPU.



* When performing write to PLC, put the PLC CPU in a STOP status.

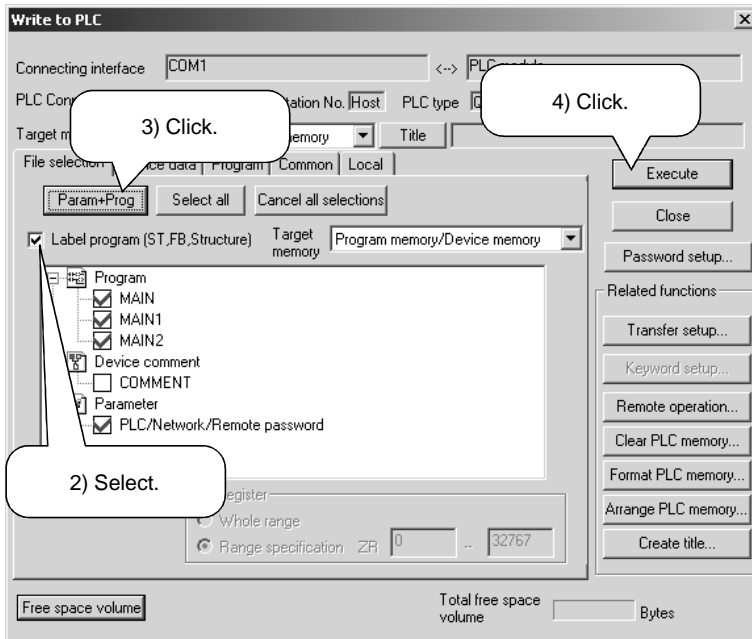
1) Click [Online] → [Write to PLC] in the menu.

2) Select the "Label program (ST, FB, structure)" check button in the <<File selection>> tab.

* When the check button is not selected, only the actual program is written.

3) Click "Param + Prog".

4) Click the **Execute** button.



* Reset the PLC CPU and put it in a RUN status.

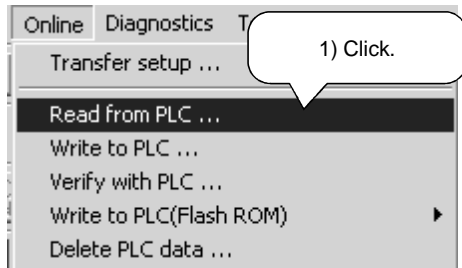
If an error occurs, choose [Diagnostics] → [PLC diagnostics] in the menu of GX Developer, and confirm the error definition.



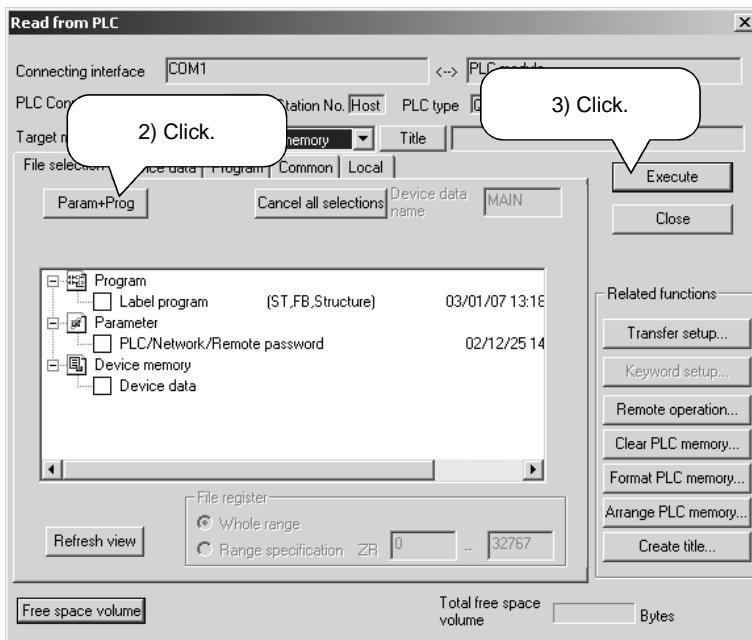
■ Performing read from PLC

The operation method for read from PLC will be explained.

Display the Read from PLC dialog and read the program and parameters from the PLC CPU.



1) Click [Online] - [Read from PLC] in the menu.



2) Click "Param + Prog" in the <<File selection>> tab.

3) Click the [Execute] button.

4



If an error occurs, choose [Diagnostics] - [PLC diagnostics] in the menu of GX Developer, and confirm the error definition.

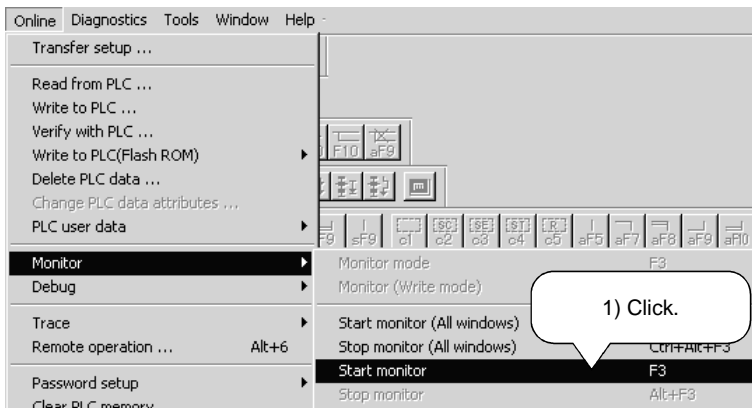
Chapter 5 explains the online debugging operation of the sequence program written to the PLC CPU using the monitor function and device test function.

- ☞ Monitoring the sequence program.
- ☞ Changing the bit device value and conducting a device test.
- ☞ Changing part of the sequence program and writing it to the PLC CPU in RUN status.

5.1 Monitoring the Sequence Program

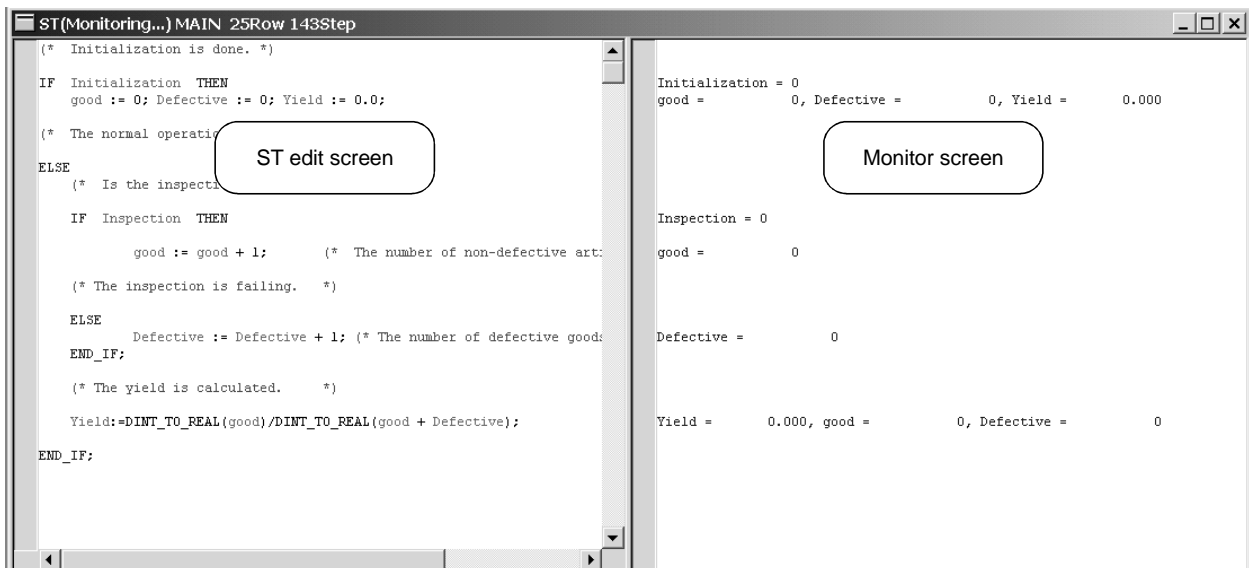
This section explains the operation method to monitor the sequence program.

■ Displaying the monitor screen



1) Click [Online] → [Monitor] → [Start monitor] in the menu.

5



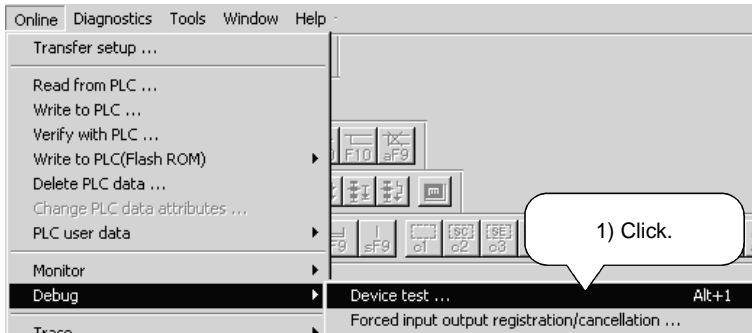
The labels displayed on the ST edit screen are displayed on the same lines of the monitor screen.

5.2 Device Test

The value of the label (bit device/word device) in the PLC CPU can be changed directly.
Here, the bit device value is changed to confirm the program behavior.

■ Confirming the program behavior

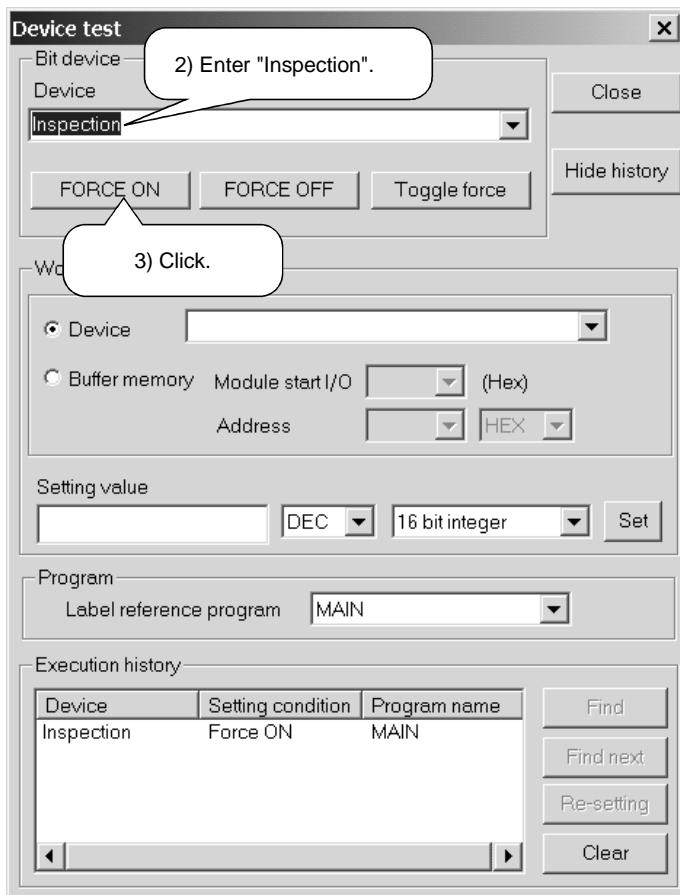
The operation to change the bit device value will be explained.



1) Click [Online] → [Debug] → [Device test] in the menu.

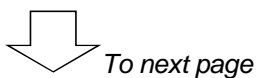


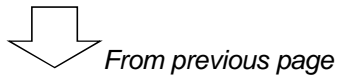
Forcibly turn ON the label "Inspection" that represents the bit device.



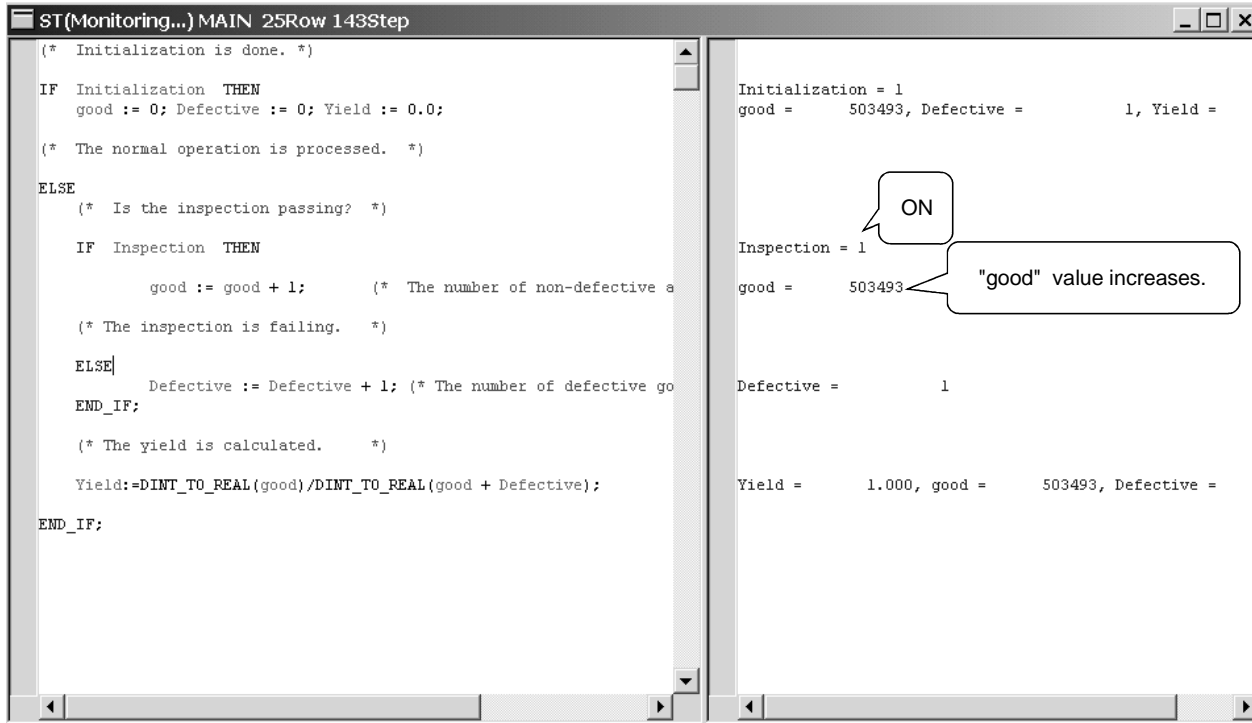
2) Input "Inspection" into the bit device.

3) Click the **FORCE ON** button.





Make confirmation on the monitor screen.



Also change the other label values and confirm the program behavior.



GX Developer supports the following debug functions for the programs created in ST language.

- Break execution : debugs programs by halting the program execution at the location specified by break point.
- 1 line execution : debugs programs by halting the program execution line-by-line.

For details, refer to the relevant section in GX Developer Operating Manual (Structured Text).

5.3 Online Change

When the PLC CPU is in a RUN status, part of the sequence program can be changed. This is called online change.

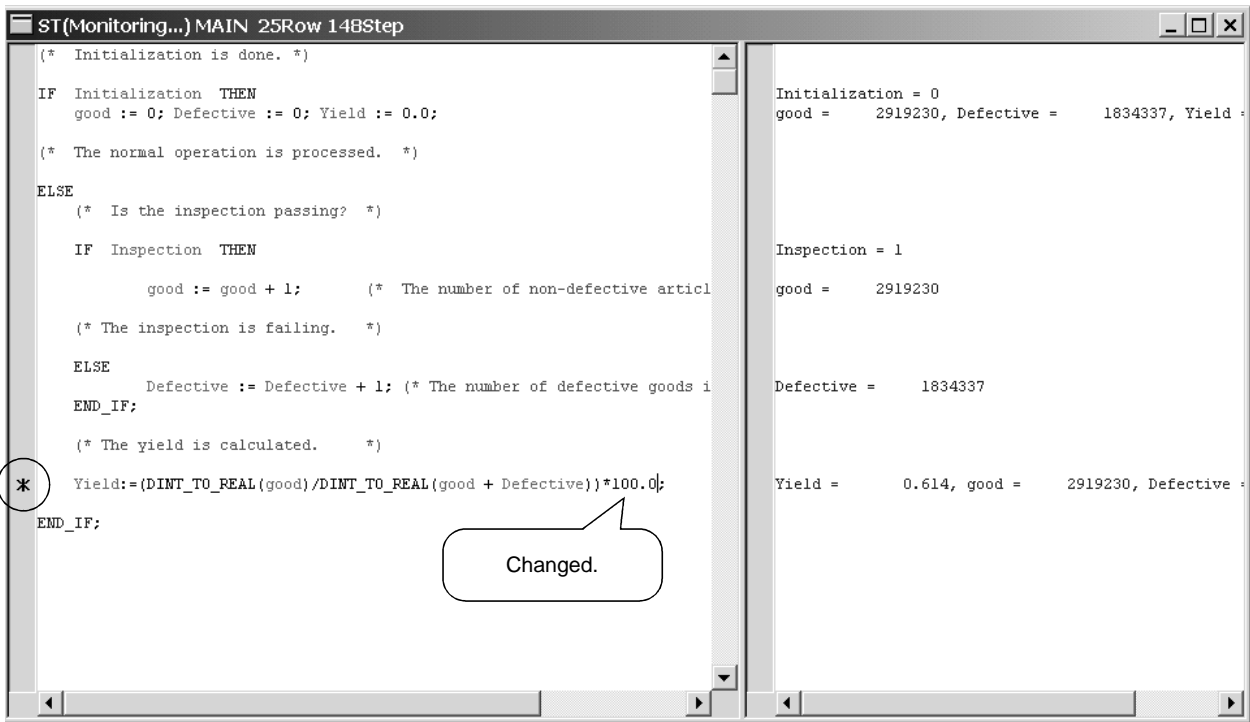
Actually change part of the sequence program and perform online change.

■ Changing part of the program and performing online change

Change the calculation expression of "Yield" and perform online change.

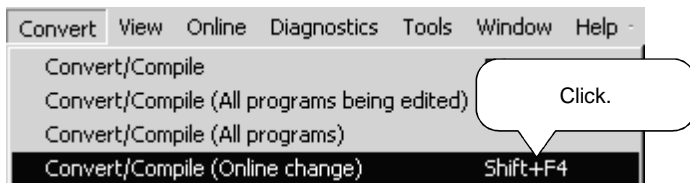
1) Change part of the program.

```
Yield := DINT_TO_REAL (good)/DINT_TO_REAL (good + Defective);
                                     ↓
Yield := (DINT_TO_REAL (good)/DINT_TO_REAL (good + Defective))*100.0;
```



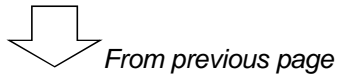
"*" indicating the line to be online changed is displayed on the indicator bar of the target line.

2) Execute online change.



Click [Convert] → [Convert/Compile (Online change)] in the menu.

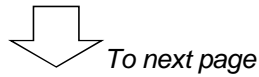
↓ To next page



3) The confirmation message is displayed.



Click the **Yes** button.



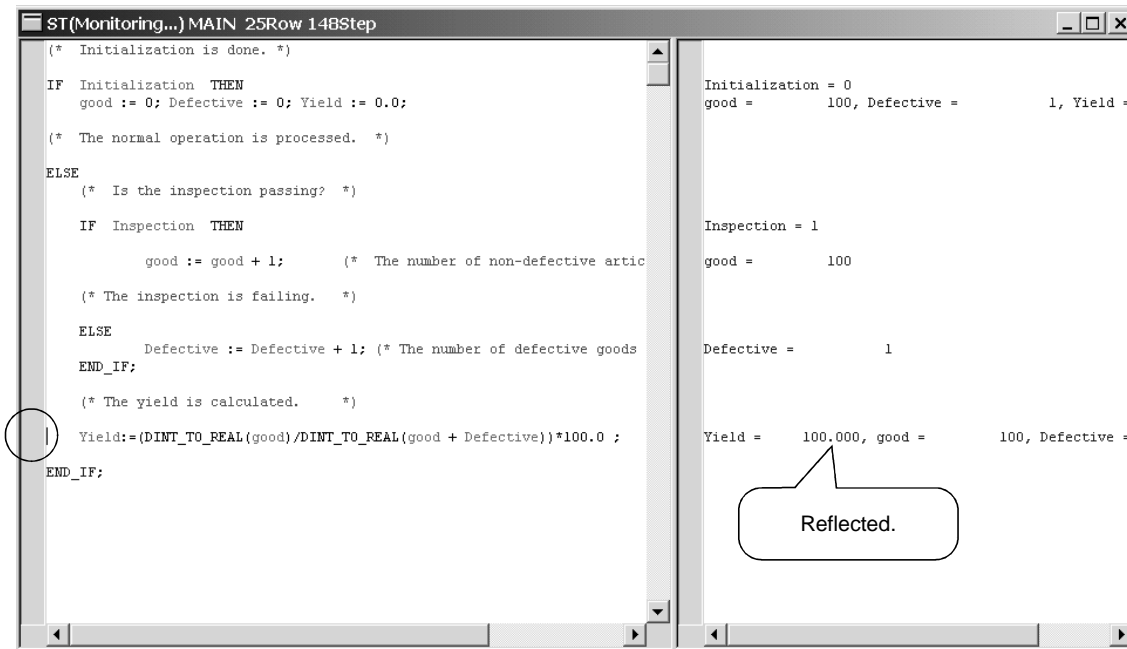
↓
From previous page

4) Online change is completed.



Click the **OK** button.

↓



"*" that indicates the online change target line disappears.

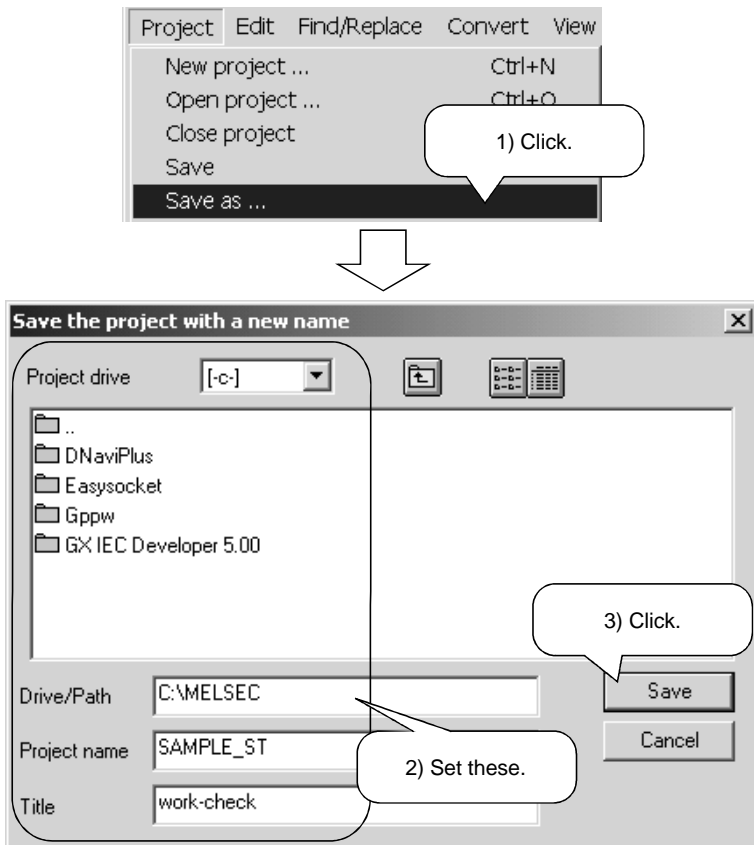
On the monitor screen, confirm that the present value of "Yield" has changed.

MEMO

In Chapter 6, the completed project is saved with a name.

■ Saving the project

Save the created project with a name.



1) Click [Project] → [Save as] in the menu.

2) Input as follows.

- Drive/Path : C:\MELSEC
- Project name : SAMPLE_ST
- Title : work-check

3) Click the **Save** button.

The program created this time was saved as described below.

Drive/Path : C:\MELSEC
Project name : SAMPLE_ST
Title :work-check

This completes a series of operations from the creation of the new ST project to the input and online debugging of the program to the storage of the project. Fully understand the operations performed until now, and proceed to Chapter 8.

MEMO

6

This chapter introduces useful functions for editing ST programs.

For more information, refer to the "GX Developer Operating Manual (Structured Text)".

(1) Window division

Every time it is desired to confirm the contents midway through editing of a large program, it is troublesome to scroll the screen to see the program ...

At such a time, use "Window division".

Choosing [Window] → [Divide into two] in the menu displays the screen in vertically divided windows. The divided windows can be scrolled/edited individually.

(2) Bookmark

When it is desired to jump to a specific line, it is troublesome to search the program from the beginning ...

At such a time, use "Bookmark".

Preset the bookmark by choosing [Find/Replace] → [Bookmark setting/release] or [Find/Replace] → [Find] → "Set bookmark" in the menu.

By choosing [Find/Replace] → [Bookmark list] in the menu, any line can be selected from the Bookmark list dialog to make a jump to that line.

(3) Display of label information

It is desired to know the device assigned to the label ...

At such a time, use "Label information".

When the mouse pointer is placed on the label,

Label name -> Label type -> Label comment -> Device

is displayed in the tool tip format for at-a-glance confirmation of the contents.

Note: · Applicable to converted (compiled) programs.

- Confirmation can also be made by activating "Show assigned device" on the Local variables setting screen.

(4) Select function

It is desired to input the function whose name has been forgotten ...

At such a time, use "Select function".

Choosing [Edit] → [Select function] displays the Select function dialog to allow the function name to be selected. Also, since the function argument type is displayed in the tool tip format when the function is inserted, the argument can be input with reference to that argument type.

(5) Change of display color and font

It is difficult to differentiate between the character strings on the edit screen since they have the same color, or it is desired to change the character size ...





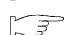
At such times, use "Change display color" or "Font".

Choosing [Tools] → [Change display color] in the menu displays the Change display color dialog to allow the comment, control syntax, character, label and background colors to be selected. Changing the display color improves readability.

Choosing [Tools] → [Font] in the menu displays the Font dialog to allow the font type, style and size to be selected. Making easy-to-use setting improves operability.

Chapters 1 to 7 explained the basic operation methods and functions for creating ST programs. In Chapter 8, create a function block (FB) in ST language and paste it to a ladder program to create a program to be used.

The main items to be explained in this chapter are as follows.

-  Adding a new FB.
-  Defining FB variables.
-  Creating an ST program.
-  Creating an FB in ST language.
-  Using the ST-written FB in a main program.

8.1 Creating an FB

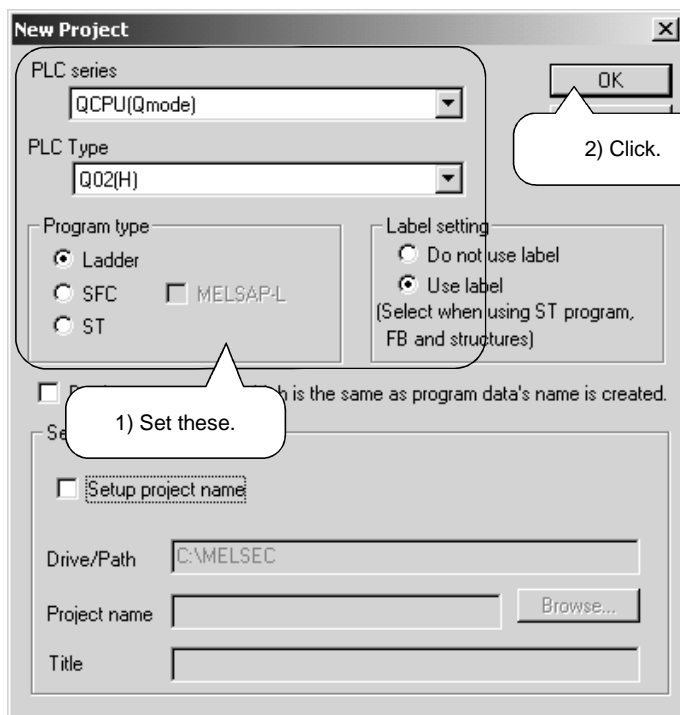
What is a function block (FB)? An FB, where often used processings are predefined as parts, can be used in the necessary area of each program.

Creating a new project

■ Creating a new project

The creation method of a new project to create a main program in ladder format will be explained.

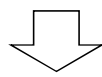
Click [Project] → [New project] in the menu to display the New project dialog.



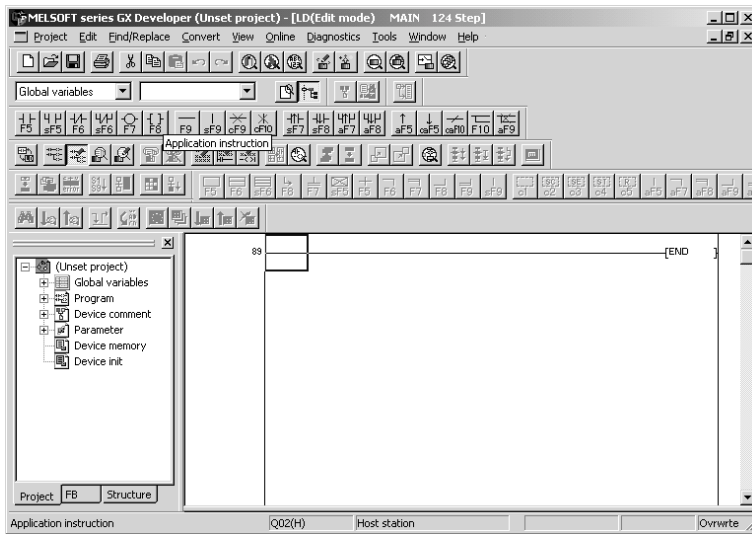
1) Enter as follows.

- PLC series :QCPU (Q mode)
- PLC type :Q02(H)
- Label setting :Use label
- Program type :Ladder

2) Click the **OK** button.

 To next page

↓
From previous page

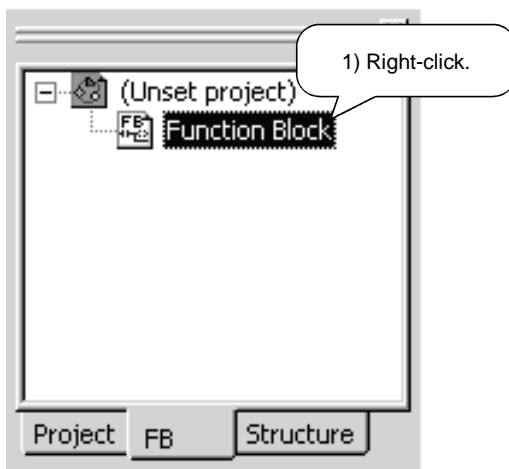


3) A new project is created.

Adding a new FB

■ Adding an FB

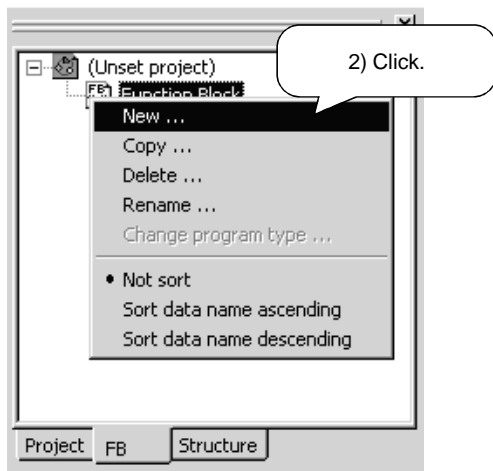
The operation method to add a new ST-written FB will be explained.



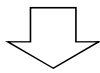
1) Right-click "Function Block" in the <<FB>> tab to display the menu.

↓
To next page

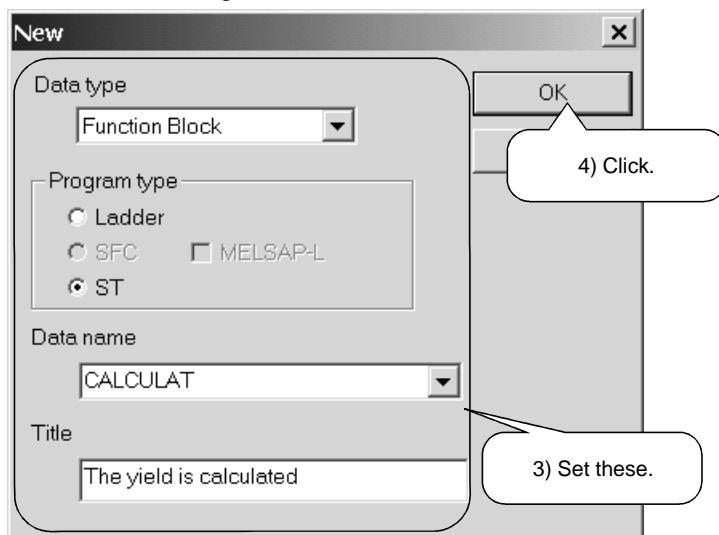
From previous page



2) Click "New".



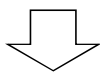
Set the New dialog.



3) Enter as follows.

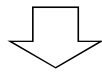
- Data type : Function Block
- Program type : ST
- Data name : CALCULAT
- Title : The yield is calculated

4) Click the **OK** button.

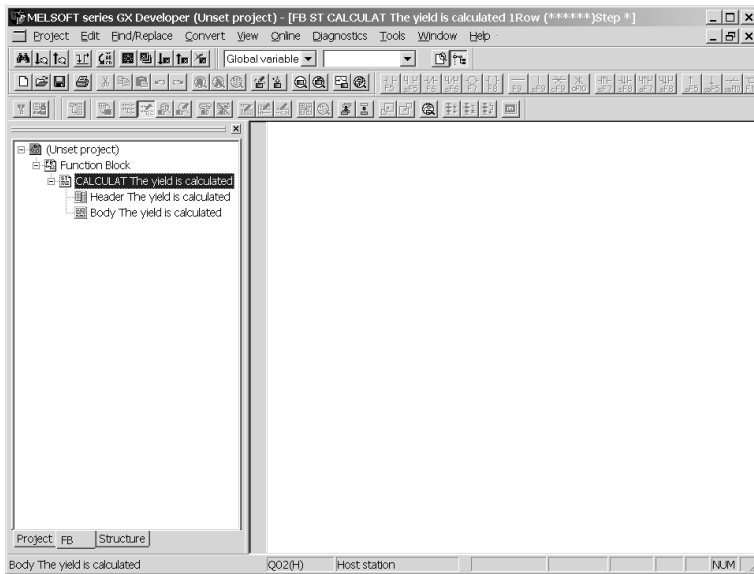


5) Click the **Yes** button.

To next page



From previous page



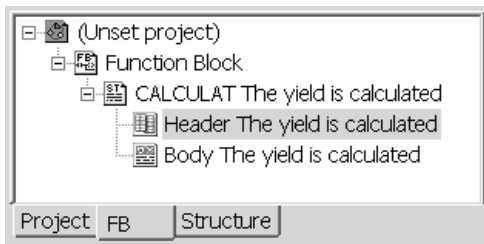
6) A new data name: CALCULAT is added.

Defining FB variables

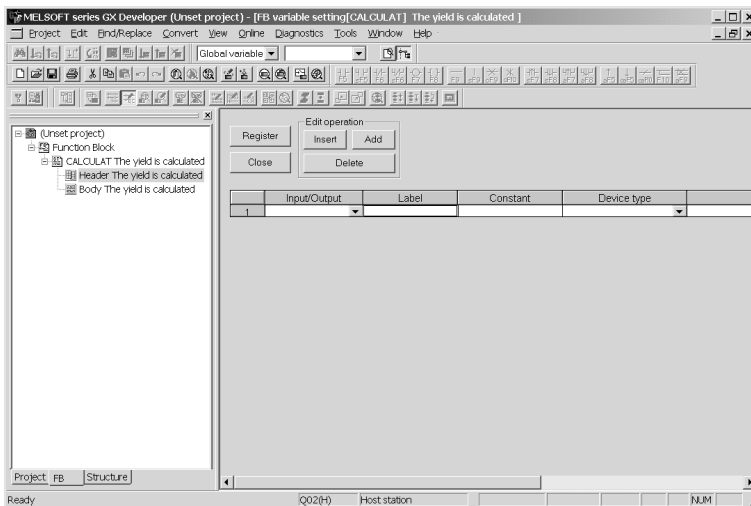
The labels used in the FB are called FB variables (FB labels).

■ Displaying the FB variable (FB labels) setting screen

Here, the operation method to define FB variables (FB labels) will be explained.



1) Double-click "Header" in the <<FB>> tab.



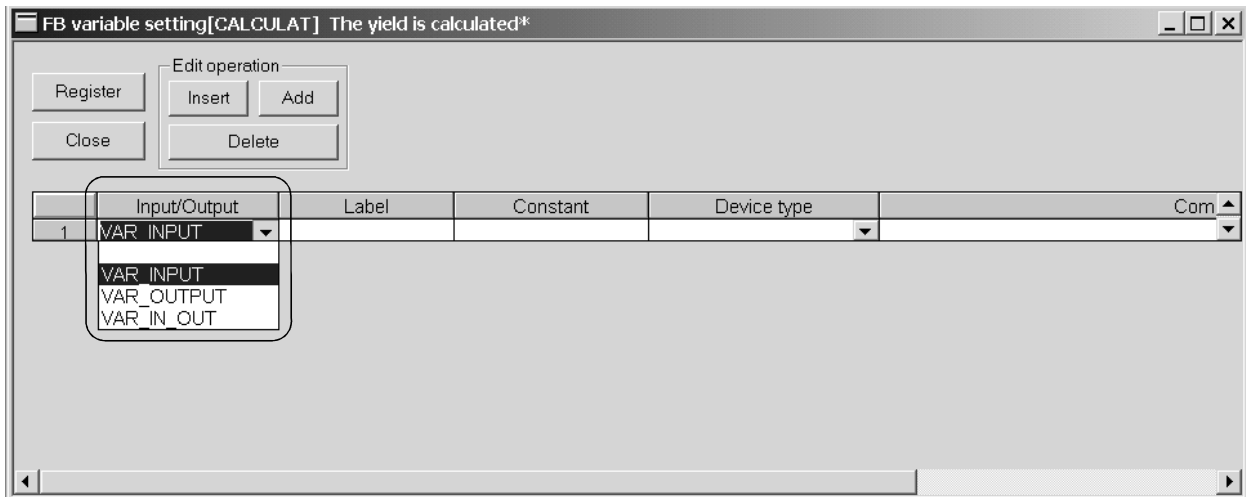
2) The FB variable (FB labels) setting screen is displayed.

■ Setting the FB variables (FB labels)

1) Select the Input/Output type.

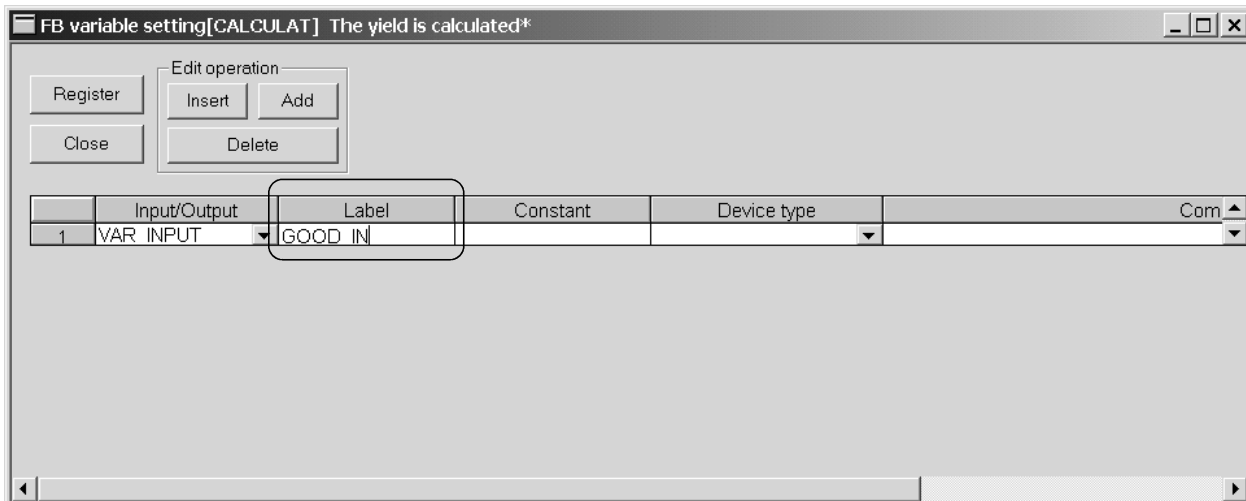
Select the label type. There are the following four types.

- VAR_INPUT Variable input from FB outside
- VAR_OUTPUT Variable output to FB outside
- VAR_IN_OUT Variable having the input and output functions
- "Blank" Variable used in FB inside

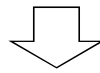


2) Enter the label name.

Enter the label name within 16 characters.

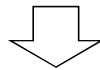
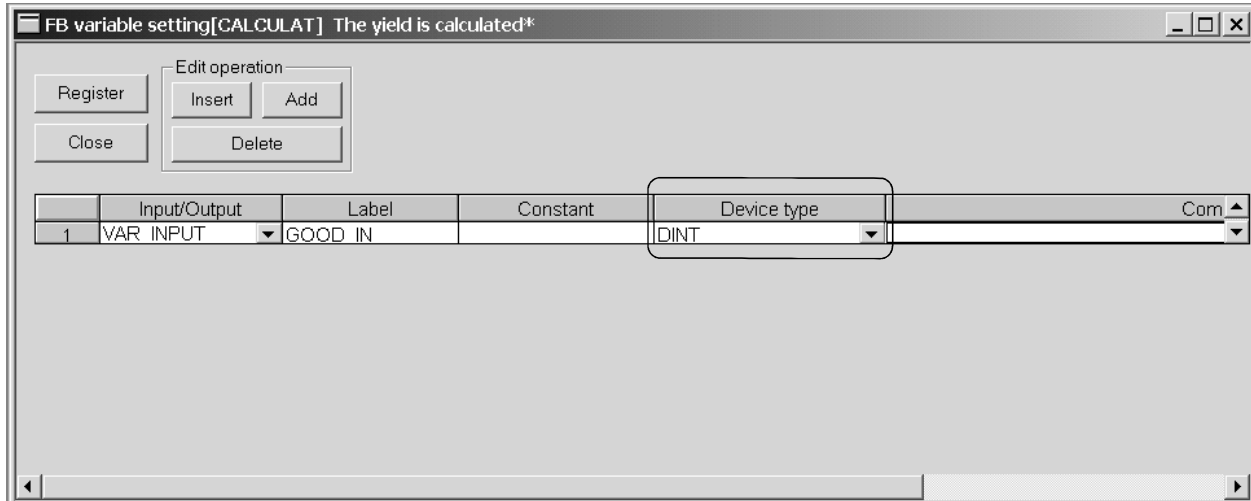


To next page

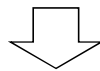
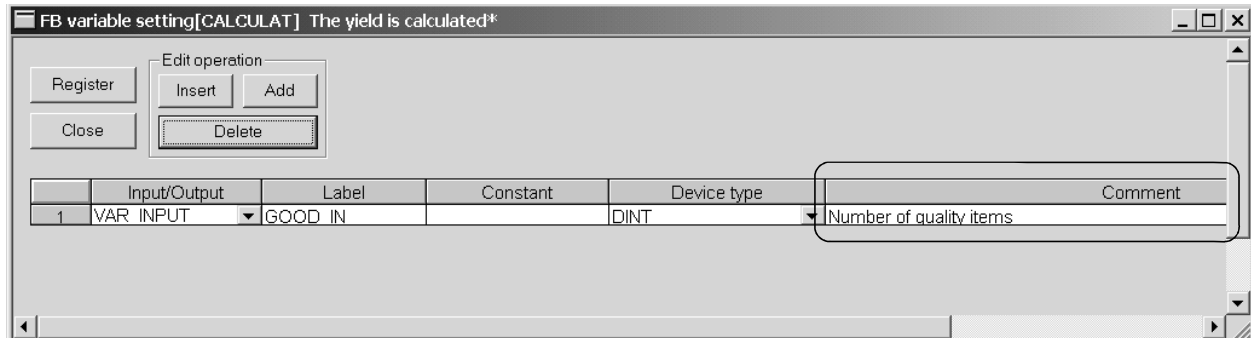


From previous page

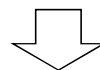
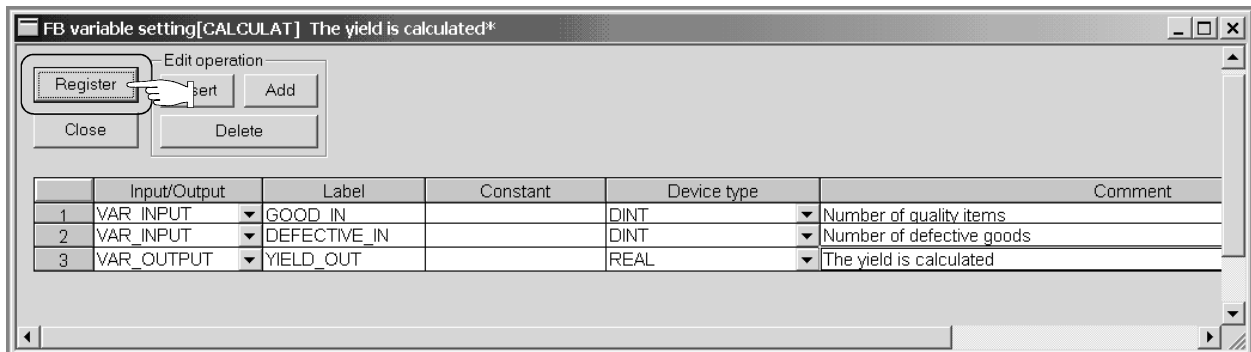
- 3) Enter the device type.
Enter it directly or make selection from the list box.



- 4) Enter a comment into the label.
Set it within 64 characters.

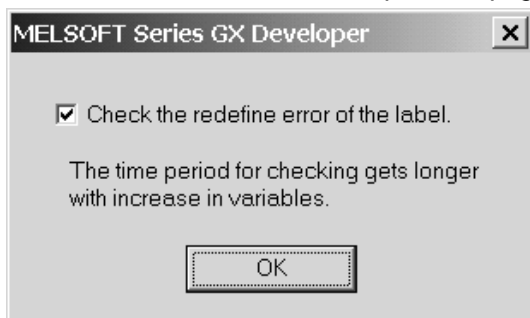


- 5) After input is complete, click the **Register** button.



To next page

From previous page



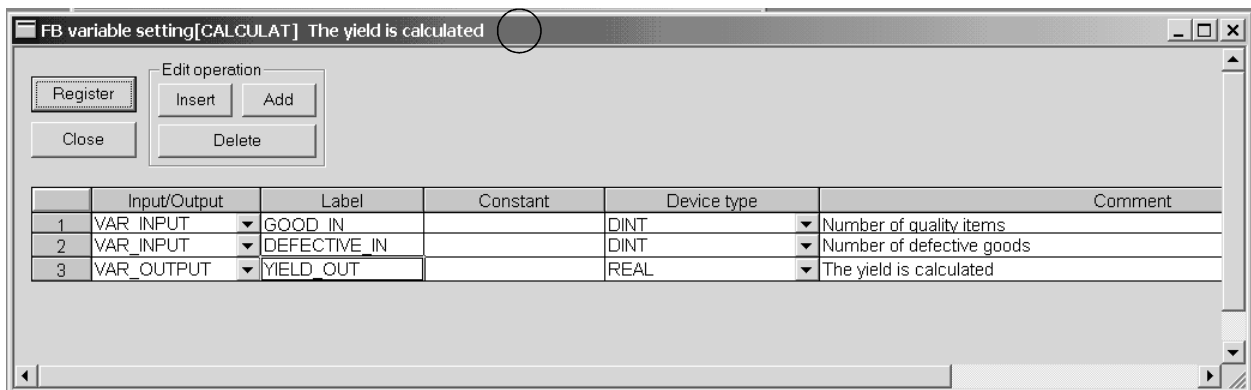
Click the **OK** button.



Registration is completed.
Click the **OK** button.



When registration is made, "*" displayed on the title bar disappears.



REMARK

For details, refer to the "GX Developer Operating Manual (Function Block)" given in Relevant Manuals.

Creating an FB in ST language

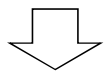
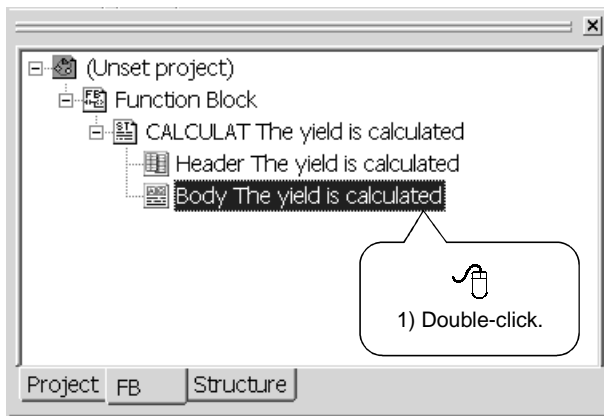
The operation to input the program in List-3 will be explained.

List-3

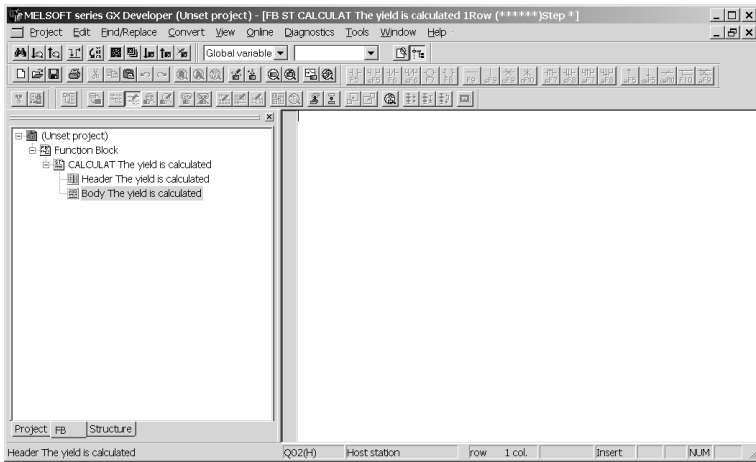
```
YIELD_OUT := DINT_TO_REAL(GOOD_IN)/DINT_TO_REAL(GOON_IN + DEFECTIVE_IN);
```

■ Displaying the FB definition screen

1) Double-click "Body".



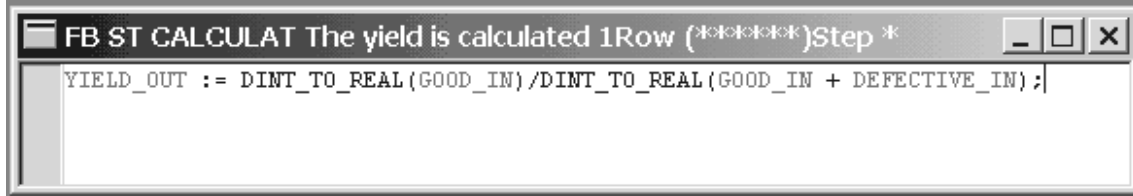
2) The FB definition screen is displayed.



■ Inputting the program

Input the FB program body as in the method of inputting the main program described in Chapter 3.

Input the program in List-3.



■ Converting (compiling) the FB

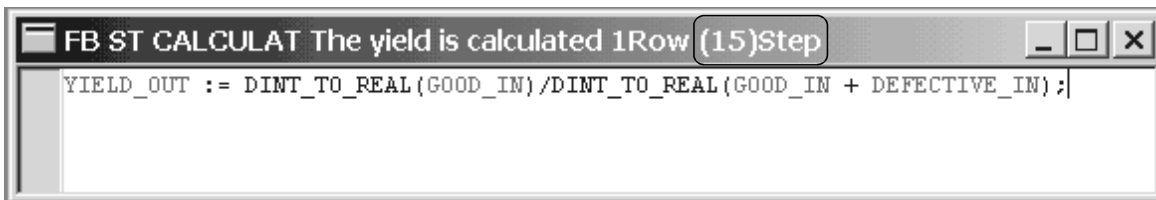
Click [Convert] → [Convert/Compile] in the menu to perform convert (compile).



Compile processing is completed.
Click the [OK] button.



At normal completion of convert (compile), the number of steps is displayed on the title bar.



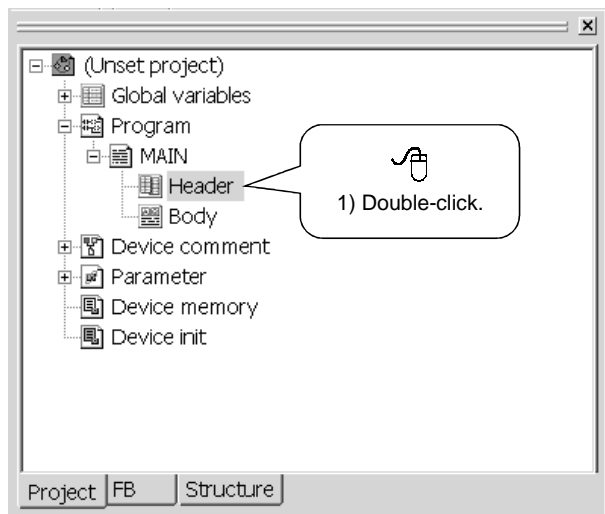
8.2 Pasting the FB to a Main Program

Create a main program (ladder) using the FB created in Section 8.1.

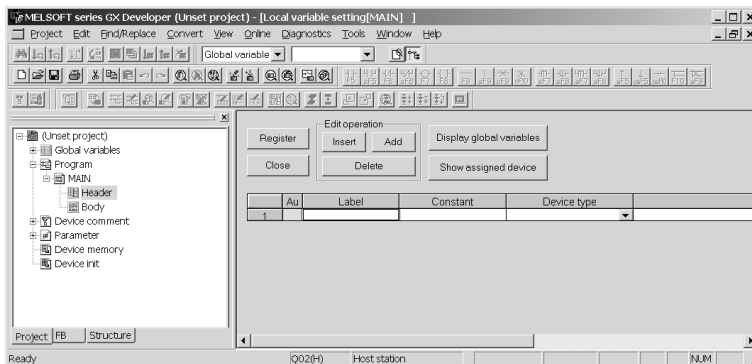
Defining the local variables

Define the labels used in the main program.

■ Displaying the Local variables setting screen



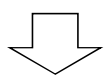
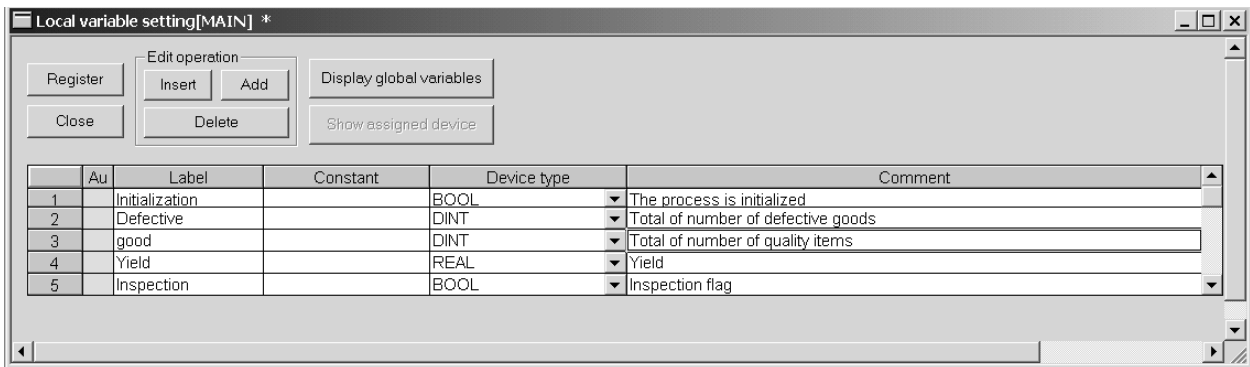
1) Double-click "Header".



2) Local variable setting screen is displayed.

■ Setting the local variables (headers)

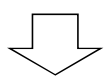
Refer to Chapter 3 and make setting as follows.



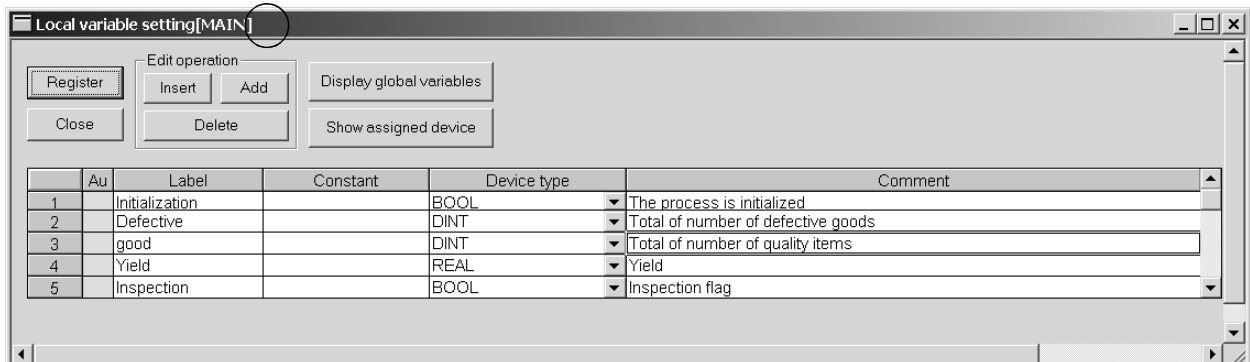
After input is complete, click the **Register** button.

The registration of the local variables is completed.

Click the **OK** button.



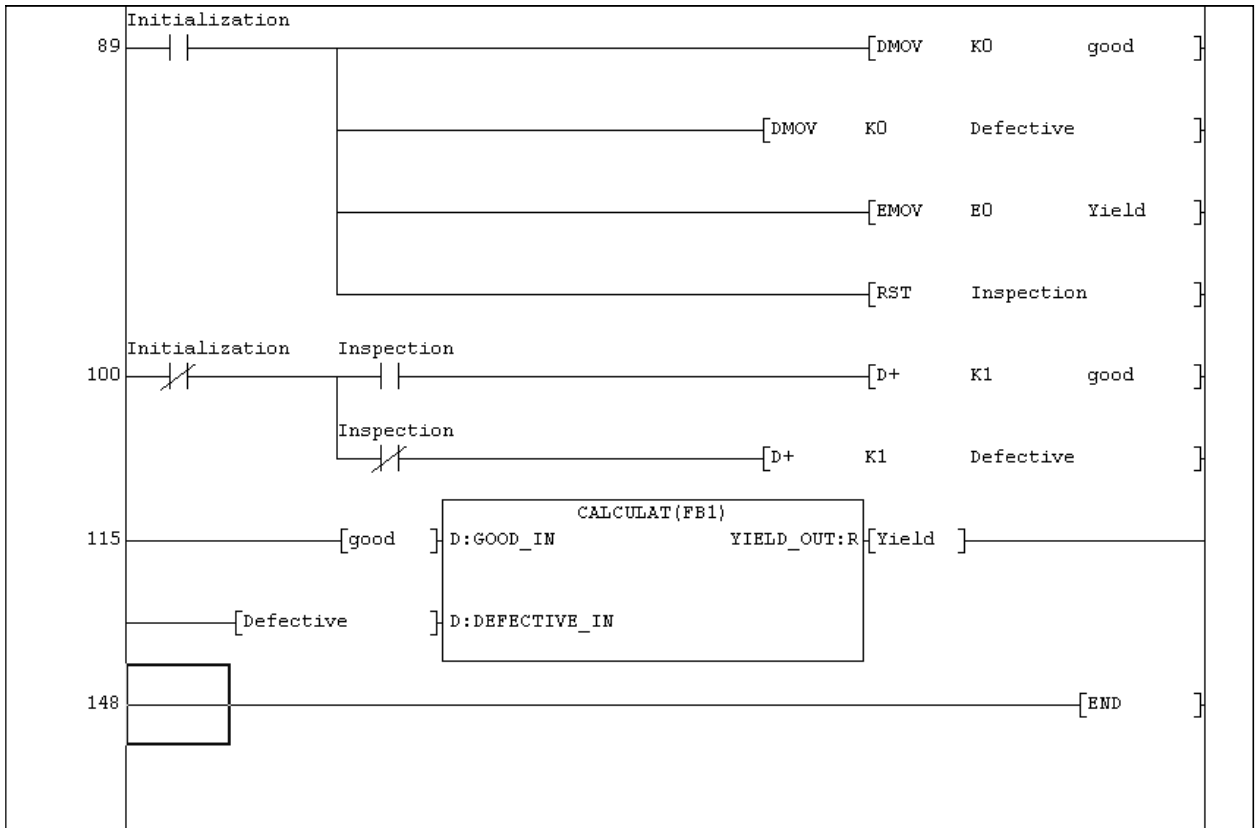
When registration is made, "*" displayed on the title bar disappears.



Creating a main program

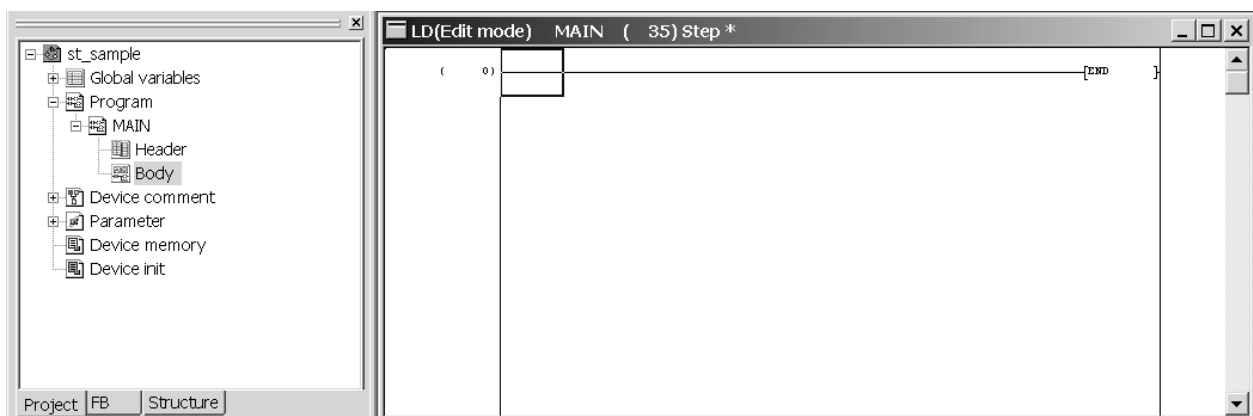
Display the main program edit screen and input the following program (List-4).

List-4



■ Displaying the edit screen

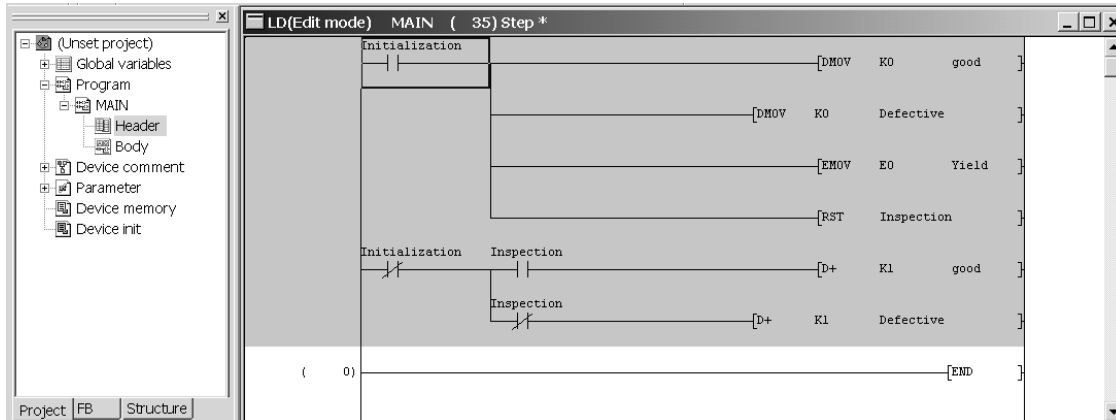
Double-click "Body" in the <<Project>> tab to display the edit screen.



↓ To next page

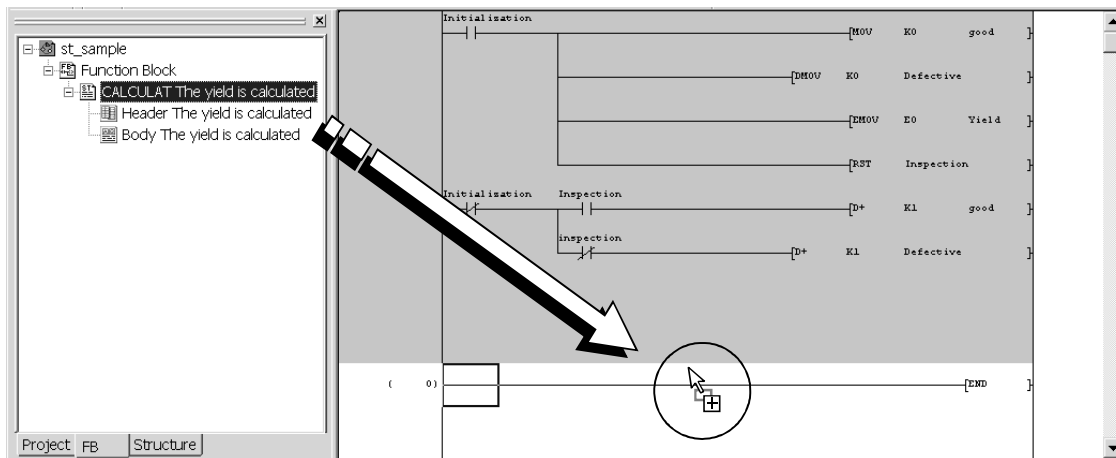
From previous page

- Inputting the program in ladder format
Refer to the following diagram and input the program.



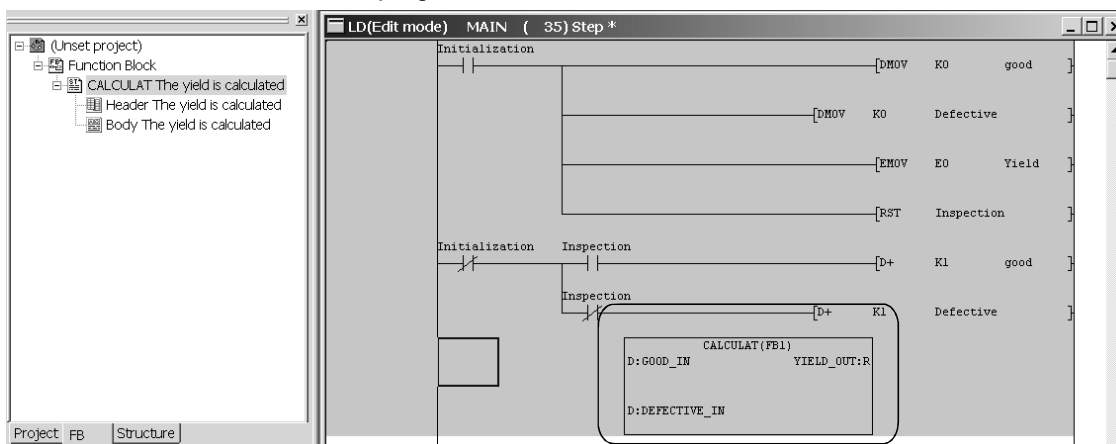
↓

- Pasting the FB
Switch to the <<FB>> tab, and drag and drop the FB program to the target place.

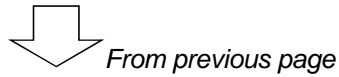


↓

The FB is inserted into the main program.

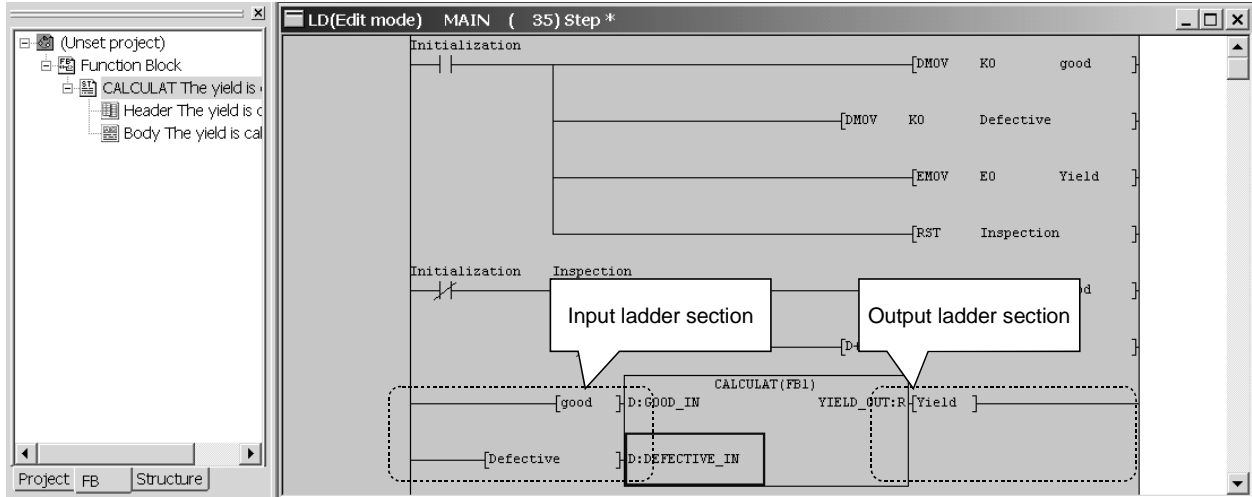


To next page



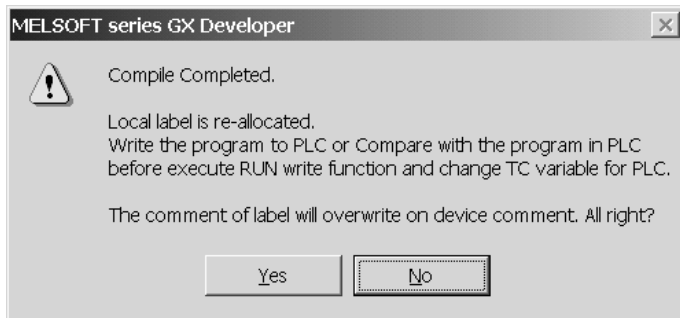
Inputting the input ladder section and output ladder section

Refer to the following diagram, and input the input ladder section and output ladder section.



Performing convert (compile)

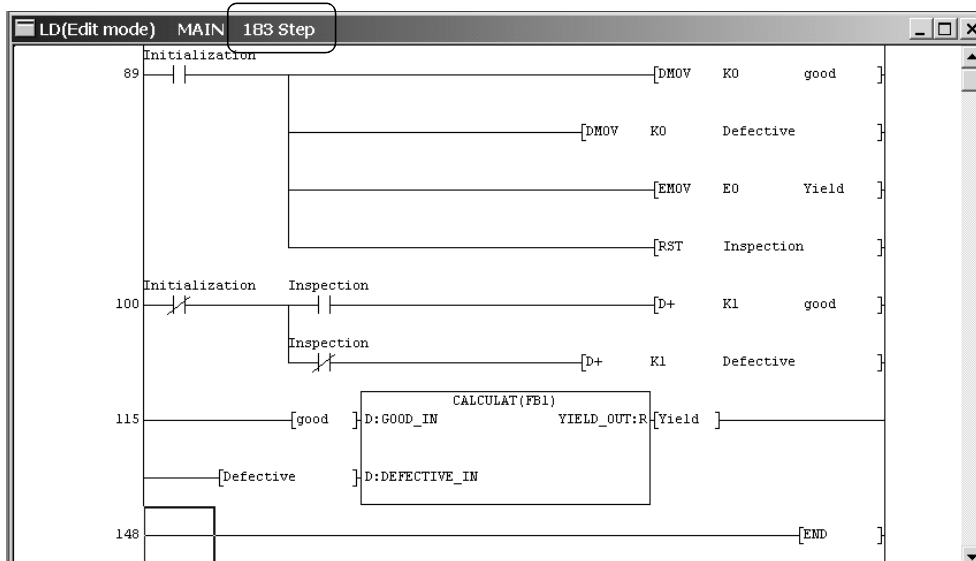
Click [Convert] → [Convert/Compile] in the menu to perform convert (compile).



Convert (compile) is completed. Click the **No** button.



When convert (compile) is completed, the number of steps is displayed on the title bar.



8.3 Online

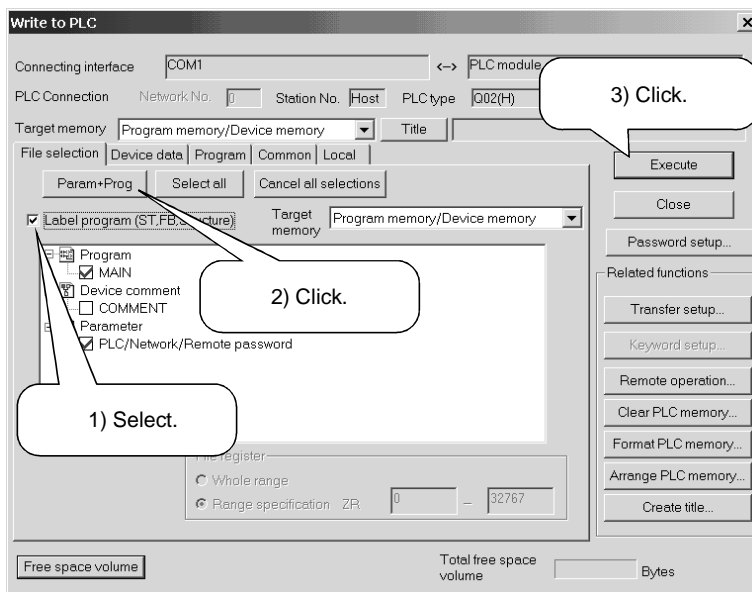
Write the sequence program to the PLC CPU, and confirm the program behavior using the monitor function and device test function.

Writing to PLC CPU

■ Performing write to PLC

Refer to Chapter 4 and perform write to PLC.

Choose [Online] → [Write to PLC] in the menu to display the Write to PLC dialog.



* When performing write to PLC, put the PLC CPU in a STOP status.

1) Choose the "Label program (ST, FB, structure)" check button in the <<File selection>> tab.

* If the check button is not chosen, only the actual program is written.

2) Click "Param + Prog".

3) Click the **Execute** button.



3) Write to PLC is completed.

* Reset the PLC CPU and put it in a RUN status.

If an error occurs, choose [Diagnostics] → [PLC diagnostics] in the menu of GX Developer, and confirm the error definition.

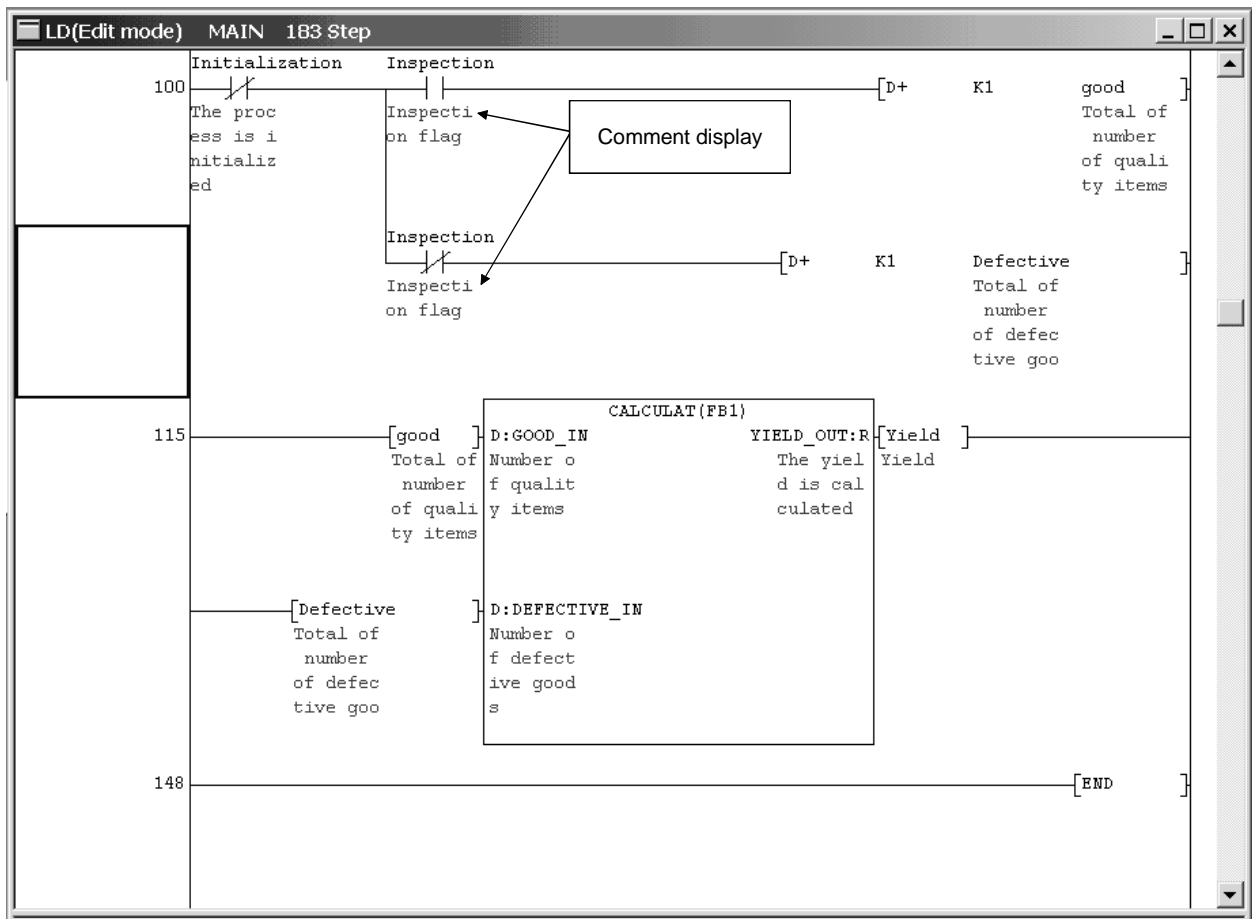
Monitoring the sequence program

Monitor and confirm the sequence program.

The monitor start/stop operation is as follows.

- When starting monitor
[Online] → [Monitor] → [Monitor mode]
- When stopping monitor
[Online] → [Monitor] → [Stop monitor]
- When resuming monitor
[Online] → [Monitor] → [Start monitor]

Monitor display



The comments set on the Local variables setting screen can be displayed by choosing [View] → [Comment] in the menu.

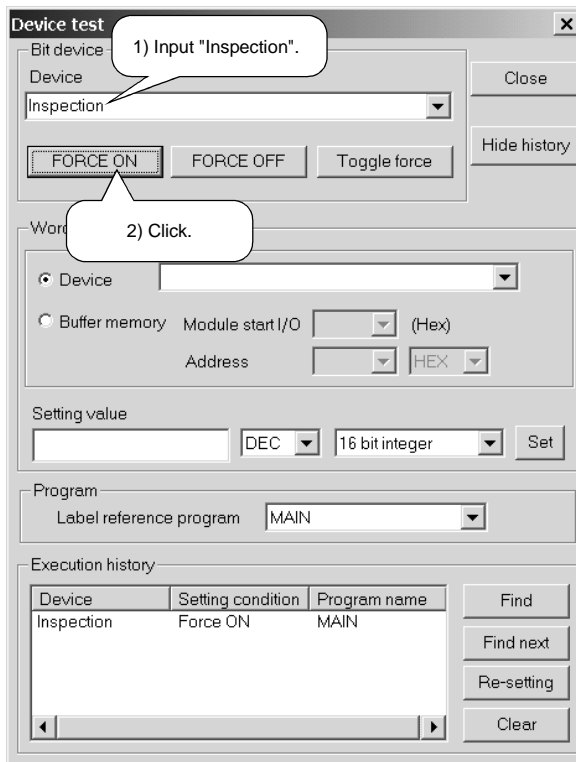
Confirming the program behavior

Change the value of the bit device in the PLC CPU and confirm the program behavior.

■ Conducting a device test

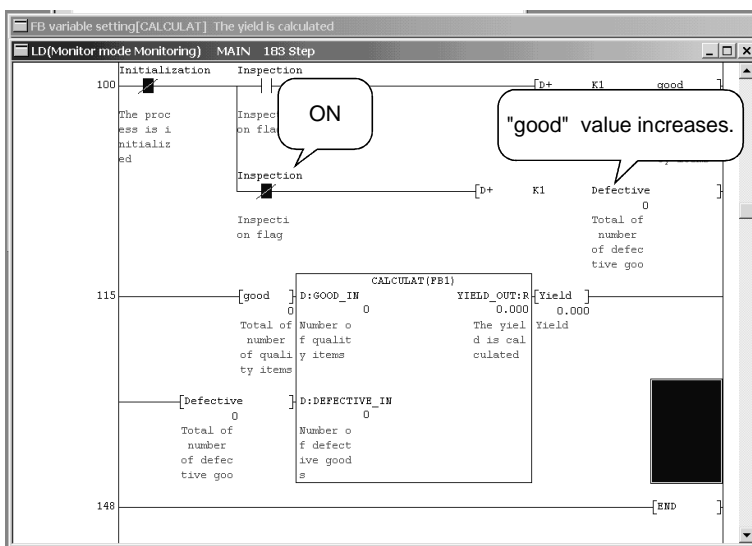
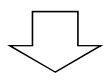
Refer to Section 5.2 and change the value of the bit device.

Choose [Online] → [Debug] → [Device test] in the menu to display the Device test dialog.



1) Input "Inspection" into the bit device.

2) Click the **FORCE ON** button.



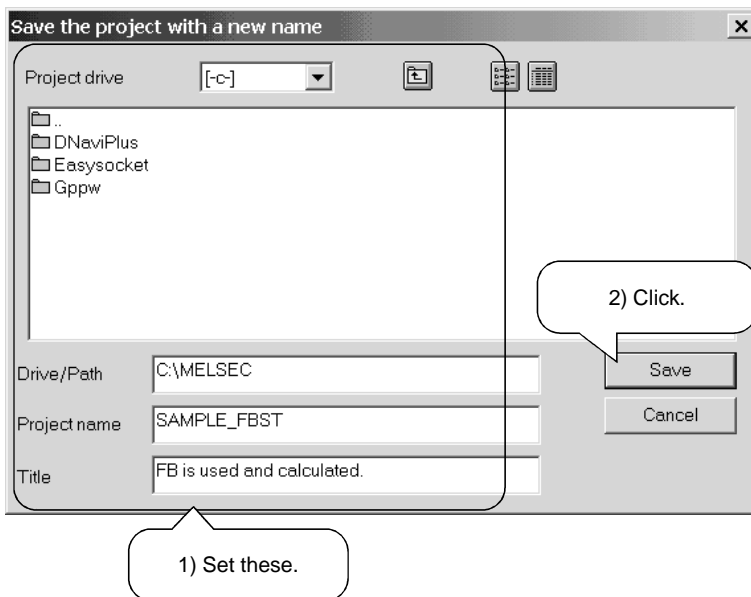
3) Check that the program is running correctly.

* Also change the other label values and confirm the program behavior.

■ Saving the project

Refer to Section 6 and save the created project with a name.

Click [Project] → [Save as] in the menu to display the Save the project with a new name dialog.



1) Enter as follows.

- Drive/Path : C:\MELSEC
- Project name : SAMPLE_FBST
- Title : FB is used and calculated.

2) Click the **Save** button.

The program created this time was saved as described below.

Drive/Path : C:\MELSEC
Project name : SAMPLE_FBST
Title : FB is used and calculated

This ends the explanation of a series of operation methods for program creation.
To further proceed to the next step, it is recommended to refer to the manuals given in the section "Relevant Manuals".

MEMO

INDEX

[A]

- Adding an FB..... 8- 2
- Alarm history display function 6-16
- Alarm list display function
 - System alarm..... 6-19
 - User alarm 6-18

[C]

- Convert (compile)
 - Converting (compiling) the FB 8-10
 - Error indication mark 3-16
 - Performing convert (compile)..... 3-14
 - The compile error (Detail) 3-15
 - What is convert (compile)..... 3-14

[D]

- Device Test
 - Confirming the program behavior 5- 2, 8-18
- Displaying the FB definition screen 8- 9
 - Inputting the program 8-10
- Displaying the FB variable screen 8- 5
- Displaying the ST edit screen 3- 9

[E]

- Editing
 - Bookmark..... 7- 1
 - Change of font 7- 1
 - Change of display font..... 7- 1
 - Display of label information 7- 1
 - Select function 7- 1
 - Window division..... 7- 1

[L]

- Label
 - What does defining the labels mean 3- 3
- Local variable
 - Displaying the setting screen 3- 3, 8-11
 - Enter a comment into the label 3- 5
 - Enter a device type..... 3- 5
 - Enter a label name 3- 5
 - Setting the local variables 3- 5, 8-12

[M]

- Monitor
 - Monitoring the Sequence Program
 - 5- 1, 8-17

[O]

- Online change.....5- 4

[P]

- Pasting the FB8-14
- Performing read from PLC 4- 2
- Performing write to PLC 4- 1, 8-16
- Program
 - Entering a comment.....3-12
 - Entering a function3-11
 - Entering a label3-10
 - Entering the characters.....3- 9
 - Function argument3-12
 - Function selection function 3- 11, 7- 1
 - Inputting the input ladder section and output ladder section 8-15
 - Inputting the program in ladder format8-14
 - What should be noted during input.....3- 8
- Project
 - Creating a new project8- 1
 - Creating a new ST project 3- 1
 - Saving the project 6- 1, 8-19

[S]

- Enter a comment into the label.....8- 7
- Enter the device type8- 7
- Enter the label name.....8- 6
- Select the Input/Output type8- 6
- Setting the FB variables8- 6

[W]

- What is a function block (FB)
 - What is a function block (FB).....8- 1
- What is the ST language 1- 1

MEMO

Structured Text (ST)

Programming Guide Book

MODEL	ST-GUIDE-EL
MODEL CODE	—
IB(NA)-0800248E-C(0310)MEE	



HEAD OFFICE : 1-8-12, OFFICE TOWER Z 14F HARUMI CHUO-KU 104-6212, JAPAN
NAGOYA WORKS : 1-14, YADA-MINAMI 5-CHOME, HIGASHI-KU, NAGOYA, JAPAN

When exported from Japan, this manual does not require application to the Ministry of Economy, Trade and Industry for service transaction permission.

Specifications subject to change without notice.

HEADQUARTERS

MITSUBISHI ELECTRIC EUROPE B.V. EUROPE
German Branch
Gothaer Straße 8
D-40880 Ratingen
Phone: +49 (0)2102 / 486-0
Fax: +49 (0)2102 / 486-1120

MITSUBISHI ELECTRIC EUROPE B.V.-org.sl. CZECH REP.
Czech Branch
Avenir Business Park, Radlická 714/113a
CZ-158 00 Praha 5
Phone: +420 - 251 551 470
Fax: +420 - 251-551-471

MITSUBISHI ELECTRIC EUROPE B.V. FRANCE
French Branch
25, Boulevard des Bouvets
F-92741 Nanterre Cedex
Phone: +33 (0)1 / 55 68 55 68
Fax: +33 (0)1 / 55 68 57 57

MITSUBISHI ELECTRIC EUROPE B.V. IRELAND
Irish Branch
Westgate Business Park, Ballymount
IRL-Dublin 24
Phone: +353 (0)1 4198800
Fax: +353 (0)1 4198890

MITSUBISHI ELECTRIC EUROPE B.V. ITALY
Italian Branch
Viale Colleoni 7
I-20041 Agrate Brianza (MB)
Phone: +39 039 / 60 53 1
Fax: +39 039 / 60 53 312

MITSUBISHI ELECTRIC EUROPE B.V. POLAND
Poland Branch
Krakowska 50
PL-32-083 Balice
Phone: +48 (0)12 / 630 47 00
Fax: +48 (0)12 / 630 47 01

MITSUBISHI ELECTRIC EUROPE B.V. RUSSIA
52, bid. 3 Kosmodamianskaya nab 8 floor
RU-115054 Moscow
Phone: +7 495 721-2070
Fax: +7 495 721-2071

MITSUBISHI ELECTRIC EUROPE B.V. SPAIN
Spanish Branch
Carretera de Rubí 76-80
E-08190 Sant Cugat del Vallés (Barcelona)
Phone: 902 131121 // +34 935653131
Fax: +34 935891579

MITSUBISHI ELECTRIC EUROPE B.V. UK
UK Branch
Travellers Lane
UK-Hatfield, Herts. AL10 8XB
Phone: +44 (0)1707 / 27 61 00
Fax: +44 (0)1707 / 27 86 95

MITSUBISHI ELECTRIC CORPORATION JAPAN
Office Tower "Z" 14 F
8-12,1 chome, Harumi Chuo-Ku
Tokyo 104-6212
Phone: +81 3 622 160 60
Fax: +81 3 622 160 75

MITSUBISHI ELECTRIC AUTOMATION, Inc. USA
500 Corporate Woods Parkway
Vernon Hills, IL 60061
Phone: +1 847 478 21 00
Fax: +1 847 478 22 53

EUROPEAN REPRESENTATIVES

GEVA AUSTRIA
Wiener Straße 89
AT-2500 Baden
Phone: +43 (0)2252 / 85 55 20
Fax: +43 (0)2252 / 488 60

TEHNIKON BELARUS
Oktyabrskaya 16/5, Off. 703-711
BY-220030 Minsk
Phone: +375 (0)17 / 210 46 26
Fax: +375 (0)17 / 210 46 26

ESCO DRIVES & AUTOMATION BELGIUM
Culliganlaan 3
BE-1831 Diegem
Phone: +32 (0)2 / 717 64 30
Fax: +32 (0)2 / 717 64 31

Koning & Hartman b.v. BELGIUM
Woluwelaan 31
BE-1800 Vilvoorde
Phone: +32 (0)2 / 257 02 40
Fax: +32 (0)2 / 257 02 49

INEA BH d.o.o. BOSNIA AND HERZEGOVINA
Aleja Lipa 56
BA-71000 Sarajevo
Phone: +387 (0)33 / 921 164
Fax: +387 (0)33 / 524 539

AKHNATON BULGARIA
4 Andrej Ljapchev Blvd. Pb 21
BG-1756 Sofia
Phone: +359 (0)2 / 817 6044
Fax: +359 (0)2 / 97 44 06 1

INEA CR d.o.o. CROATIA
Losinjska 4 a
HR-10000 Zagreb
Phone: +385 (0)1 / 36 940 -01 / -02 / -03
Fax: +385 (0)1 / 36 940 -03

AutoCont C.S. s.r.o. CZECH REPUBLIC
Technologická 374/6
CZ-708 00 Ostrava-Pustkovce
Phone: +420 595 691 150
Fax: +420 595 691 199

Beijer Electronics A/S DENMARK
Lykkegårdsvej 17
DK-4000 Roskilde
Phone: +45 (0)46 / 75 76 66
Fax: +45 (0)46 / 75 56 26

Beijer Electronics Eesti OÜ ESTONIA
Pärnu mnt.160i
EE-11317 Tallinn
Phone: +372 (0)6 / 51 81 40
Fax: +372 (0)6 / 51 81 49

Beijer Electronics OY FINLAND
Peltoie 37
FIN-28400 Ulvila
Phone: +358 (0)207 / 463 540
Fax: +358 (0)207 / 463 541

UTEKO GREECE
5, Mavrogenous Str.
GR-18542 Piraeus
Phone: +30 211 / 1206 900
Fax: +30 211 / 1206 999

MELTRADE Kft. HUNGARY
Fertő utca 14.
HU-1107 Budapest
Phone: +36 (0)1 / 431-9726
Fax: +36 (0)1 / 431-9727

Beijer Electronics SIA LATVIA
Ritausmas iela 23
LV-1058 Riga
Phone: +371 (0)784 / 2280
Fax: +371 (0)784 / 2281

Beijer Electronics UAB LITHUANIA
Savanoriu Pr. 187
LT-02300 Vilnius
Phone: +370 (0)5 / 232 3101
Fax: +370 (0)5 / 232 2980

EUROPEAN REPRESENTATIVES

ALFATRADA Ltd. MALTA
99, Paola Hill
Malta- Paola PLA 1702
Phone: +356 (0)21 / 697 816
Fax: +356 (0)21 / 697 817

INTEHSIS srl MOLDOVA
bld. Traian 23/1
MD-2060 Kishinev
Phone: +373 (0)22 / 66 4242
Fax: +373 (0)22 / 66 4280

HIFLEX AUTOM.TECHNIEK B.V. NETHERLANDS
Wolweverstraat 22
NL-2984 CD Ridderkerk
Phone: +31 (0)180 - 46 60 04
Fax: +31 (0)180 - 44 23 55

Koning & Hartman b.v. NETHERLANDS
Haarlerbergweg 21-23
NL-1101 CH Amsterdam
Phone: +31 (0)20 / 587 76 00
Fax: +31 (0)20 / 587 76 05

Beijer Electronics AS NORWAY
Postboks 487
NO-3002 Drammen
Phone: +47 (0)32 / 24 30 00
Fax: +47 (0)32 / 84 85 77

Fonseca S.A. PORTUGAL
R. João Francisco do Casal 87/89
PT - 3801-997 Aveiro, Esgueira
Phone: +351 (0)234 / 303 900
Fax: +351 (0)234 / 303 910

Sirius Trading & Services srl ROMANIA
Aleea Lacul Morii Nr. 3
RO-060841 Bucuresti, Sector 6
Phone: +40 (0)21 / 430 40 06
Fax: +40 (0)21 / 430 40 02

Craft Con. & Engineering d.o.o. SERBIA
Bulevar Svetog Cara Konstantina 80-86
SER-18106 Nis
Phone: +381 (0)18 / 292-24-4/5
Fax: +381 (0)18 / 292-24-4/5

INEA SR d.o.o. SERBIA
Izletnicka 10
SER-113000 Smederevo
Phone: +381 (0)26 / 617 163
Fax: +381 (0)26 / 617 163

SIMAP s.r.o. SLOVAKIA
Jána Derku 1671
SK-911 01 Trenčín
Phone: +421 (0)32 743 04 72
Fax: +421 (0)32 743 75 20

PROCONT, spol. s r.o. Prešov SLOVAKIA
Kúpeľná 1/A
SK-080 01 Prešov
Phone: +421 (0)51 7580 611
Fax: +421 (0)51 7580 650

INEA d.o.o. SLOVENIA
Stegne 11
SI-1000 Ljubljana
Phone: +386 (0)1 / 513 8100
Fax: +386 (0)1 / 513 8170

Beijer Electronics AB SWEDEN
Box 426
SE-20124 Malmö
Phone: +46 (0)40 / 35 86 00
Fax: +46 (0)40 / 93 23 01

Omni Ray AG SWITZERLAND
Im Schörlü 5
CH-8600 Dübendorf
Phone: +41 (0)44 / 802 28 80
Fax: +41 (0)44 / 802 28 28

GTS TURKEY
Bayraktar Bulvarı Nutuk Sok. No:5
TR-34775 Yukarı Dudullu-Ümraniye-İSTANBUL
Phone: +90 (0)216 526 39 90
Fax: +90 (0)216 526 39 95

CSC Automation Ltd. UKRAINE
4-B, M. Raskovoyi St.
UA-02660 Kiev
Phone: +380 (0)44 / 494 33 55
Fax: +380 (0)44 / 494-33-66

EURASIAN REPRESENTATIVES

Kazpromautomatiks Ltd. KAZAKHSTAN
Mustafina Str. 7/2
KAZ-470046 Karaganda
Phone: +7 7212 / 50 11 50
Fax: +7 7212 / 50 11 50

MIDDLE EAST REPRESENTATIVES

ILAN & GAVISH Ltd. ISRAEL
24 Shenkar St., Kiryat Arie
IL-49001 Petah-Tiqva
Phone: +972 (0)3 / 922 18 24
Fax: +972 (0)3 / 924 0761

TELEX ELECTRONICS Ltd. ISRAEL
2 Ha'umanut, P.O.B. 6272
IL-42160 Netanya
Phone: +972 (0)9 / 863 39 80
Fax: +972 (0)9 / 885 24 30

CEG INTERNATIONAL LEBANON
Cebaco Center/Block A Autostrade DORA
Lebanon - Beirut
Phone: +961 (0)1 / 240 430
Fax: +961 (0)1 / 240 438

AFRICAN REPRESENTATIVE

CBI Ltd. SOUTH AFRICA
Private Bag 2016
ZA-1600 Isando
Phone: +27 (0)11 / 977 0770
Fax: +27 (0)11 / 977 0761