

ST Series

Remote I/O

**Open networked I/O –
Cost efficient, high quality, flexible**



Combine with other open network components for maximum design flexibility



Slice I/O format allows the right number of I/O in the right place



Wide variety of I/O types to meet all application needs



Gold plated contacts and comprehensive grounding prevent downtime

Flexibility and Compatibility



ST I/O provides dependability for all application environments.

I/O on your terms

■ Modular Architecture

ST is I/O how you want it, where you want it. Don't settle for systems that dictate a fixed number of one I/O type on each drop, leaving unused points and wasted capacity. You can have an I/O drop with as little as two points. In addition, ST separates the termination bases from the active electronics permitting easy serviceability when necessary.



Module coding prevents incorrect installation of the electronics modules.

■ Wide range of I/O

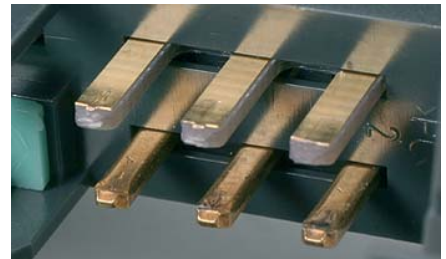
ST offers a comprehensive array of different I/O types to meet the needs of any application. Select from digital and analogue inputs and outputs as well as specialist types such as SST encoder inputs.

■ Flexible termination choices

Specify spring clamp or screw terminal termination bases to suit the required wiring practices of the application. When servicing is required, termination bases and associated wiring remain in place while the active electronics module is replaced.

■ Insuring dependability

Small but important details insure the ST series provides a long, dependable service life. This includes gold plated contacts, module coding to prevent incorrect installation and comprehensive grounding measures.



Gold-plated contacts for long service life and minimum contact resistance, even after many insertions.

■ Open network options

ST supports major open networks such as CC-Link and Profibus. Hence it can form the backbone of an application where a variety of third party system components are also required.

■ Easy configuration

GX Configurator ST provides a fast, graphical method to configure new systems and troubleshoot existing ones. In addition to I/O planning, network diagnostics are also included.

■ Fully certified

No matter where in the world your project is destined, use ST with confidence. It complies with all major global certifications such as CE and UL plus global shipping approvals.



Spring contact for a reliable ground connection

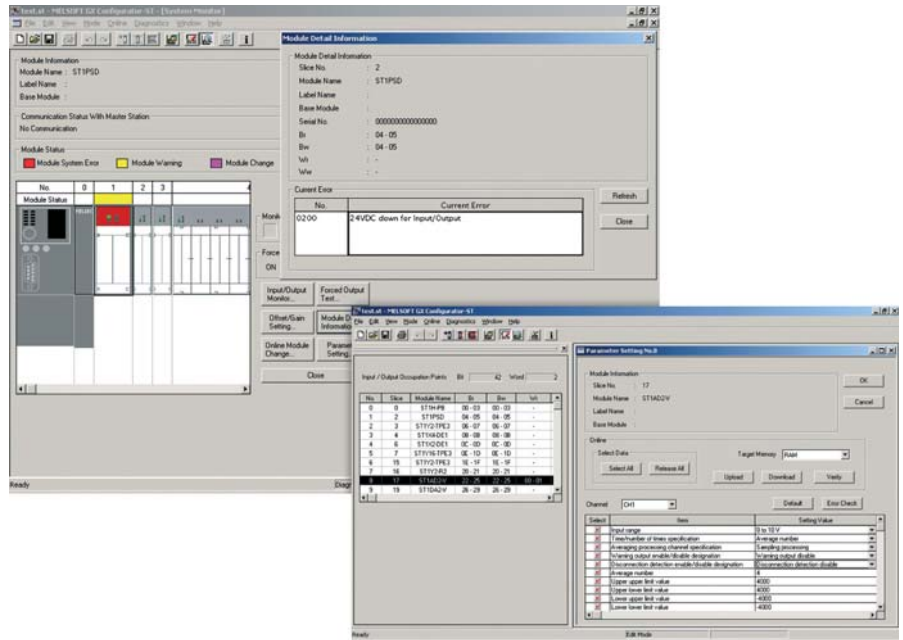
Simple Configuration, Powerful Diagnostics

Reduced engineering costs

A complete ST series I/O system can be set up in minutes using the GX Configurator ST software. This powerful tool meets all your needs regardless of whether you are configuring a system for the first time or troubleshooting an existing system. Regardless of whether you are using CC-Link or Profibus, both networks are supported.

Efficient engineering

At the design stage, GX Configurator ST helps you complete your system faster. Invalid configurations are prevented, power calculations help you choose the right components and general project parameters are automatically maintained. The software also provides automatic documentation of system layouts and configuration for project files for delivery to a customer. In addition to all aspects of the I/O system itself, the software also provides full configuration tools for both CC-Link and Profibus, insuring all network parameters are correctly handled before a system is installed.



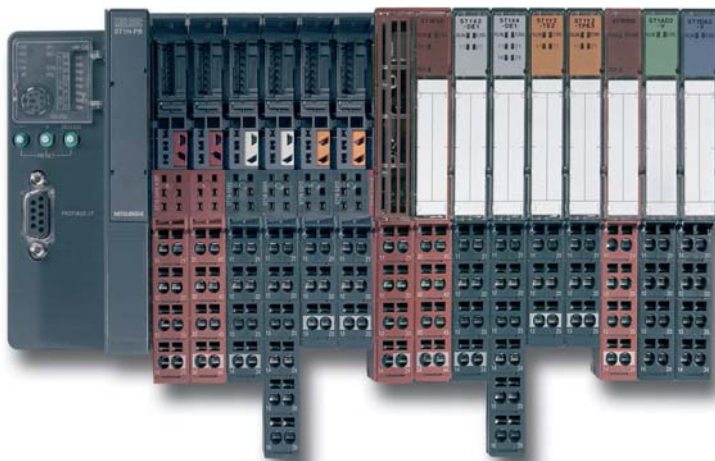
Simple and efficient configuration with GX Configurator ST

Minimized downtime

GX Configurator ST's benefits extend beyond designing the system. After installation, System Monitor provides comprehensive plain text component status descriptions allowing quick identification of problems.

Online Mode allows specific system conditions to be forced, simplifying troubleshooting. Finally, network traffic can also be monitored, to insure communications between the I/O and master station are correct.

I/O modules and intelligent function modules can be replaced without stopping the MELSEC-ST system.



Just snap the head station and the base modules you need onto the top-hat DIN rail, add the required electronics modules, quickly connect the wiring and your new system is ready.

Specifications ///

ST Series I/O	
Networks supported	CC-Link, Profibus-DP
Maximum number of I/O stations per network	CC-Link: 42 stations (remote device), Profibus-DP: 99 stations (max. 32 per segment)
Maximum number of slice I/O modules per station	63
Maximum digital I/O count per station	252
Maximum analog I/O count per station	52
I/O slice counts available	2, 4, 16 and 32 points
Digital input types supported	Positive switching
Digital output types supported	Transistor (positive switching), Relay
Analog input types supported	Voltage, Current, Thermocouple, RTD
Analog output types supported	Voltage, Current
Special function I/O types supported	SSI encoder interface
Power supply	24 V DC
Wiring options	Spring clamp, screw clamp
Accessory parts available	Terminal labels, polarity tags, line shield connector

EUROPEAN BRANCHES

MITSUBISHI ELECTRIC EUROPE B.V. Radlicka 714/113 a CZ-158 00 Praha 5 Phone: +420 251 551 470	CZECH REPUBLIC
MITSUBISHI ELECTRIC EUROPE B.V. 25, Boulevard des Bouvets F-92741 Nanterre Cedex Phone: +33 (0)1 / 55 68 55 68	FRANCE
MITSUBISHI ELECTRIC EUROPE B.V. Gothaer Straße 8 D-40880 Ratingen Phone: +49 (0)2102 / 486-0	GERMANY
MITSUBISHI ELECTRIC EUROPE B.V. Westgate Business Park, Ballymount IRL-Dublin 24 Phone: +353 (0)1 419 88 00	IRELAND
MITSUBISHI ELECTRIC EUROPE B.V. Viale Colleoni 7 I-20041 Agrate Brianza (MI) Phone: +39 039 / 60 53 1	ITALY
MITSUBISHI ELECTRIC EUROPE B.V. Carrera de Rubi 76-80 E-08190 Sant Cugat del Vallés (Barcelona) Phone: 902 131121 // +34 935653131	SPAIN
MITSUBISHI ELECTRIC EUROPE B.V. Travelers Lane UK-Hatfield, Herts. AL10 8XB	UK

EUROPEAN REPRESENTATIVES

GEVA Wiener Straße 89 AT-2500 Baden Phone: +43 (0)2252 / 85 55 20	AUSTRIA	B.TECH, a.s. U Borové 69 CZ-58001 Havlickov Brod Phone: +420 (0)569 777 777	CZECH REPUBLIC	Beijer Electronics SIA Vestienas iela 2 LV-1035 Riga Phone: +371 (0)784 / 2280	LATVIA	ELECTROTECHNICAL SYSTEMS Derbenevskaya st. 11A, Office 69 RU-115114 Moscow Phone: +7 495 / 744 55 54	RUSSIA	CS MTrade Slovensko Vajanskeho 58 SK-92101 Piestany Phone: +421 (0)33 / 7742 760	SLOVAKIA	TEXEL ELECTRONICS Ltd. 2 Ha'umanut, P.O.B. 6272 IL-42160 Netanya Phone: +972 (0)9 / 863 08 91	ISRAEL
TEHNIKON Oktyabrskaya 16/5, Off. 703-711 BY-220030 Minsk Phone: +375 (0)17 / 210 46 26	BELARUS	Beijer Electronics A/S Lykkegårdsvej 17, 1. DK-4000 Roskilde Phone: +45 (0)46 / 75 76 66	DENMARK	Beijer Electronics UAB Savanoriu Pr. 187 LT-02300 Vilnius Phone: +370 (0)5 / 232 3101	LITHUANIA	ELEKTROSTILY Rubzovskajaja nab. 4-3, No. 8 RU-105082 Moscow Phone: +7 495 / 545 3419	RUSSIA	INEA d.o.o. Stegne 11 SI-1000 Ljubljana Phone: +386 (0)1 / 513 8100	SLOVENIA	CBI Ltd. Private Bag 2016 ZA-1600 Isando Phone: +27 (0)11 / 928 2000	SOUTH AFRICA
Koning & Hartman b.v. Woluwelaan 31 BE-1800 Vilvoorde Phone: +32 (0)2 / 257 02 40	BELGIUM	Beijer Electronics Eesti OÜ Pärnu mnt.160i EE-11317 Tallinn Phone: +372 (0)6 / 51 81 40	ESTONIA	INTEHISIS srl bld. Traian 23/1 MD-2060 Kishinev Phone: +373 (0)22 / 66 4242	MOLDOVA	CONSYS Promyshlennaya st. 42 RU-198099 St. Petersburg Phone: +7 812 / 325 36 53	RUSSIA	Beijer Electronics AB Box 426 SE-20124 Malmö Phone: +46 (0)40 / 35 86 00	SWEDEN	Econotec AG Hinterdorfstr. 12 CH-8309 Nürensdorf Phone: +41 (0)44 / 838 48 11	SWITZERLAND
INEA BH d.o.o. Aleja Lipa 56 BA-71000 Sarajevo Phone: +387 (0)33 / 921 164	BOSNIA AND HERZEG.	Beijer Electronics OY Jaakonkatu 2 FIN-01620 Vantaa Phone: +358 (0)207 / 463 500	FINLAND	Koning & Hartman b.v. Haarlerbergweg 21-23 NL-1101 CH Amsterdam Phone: +31 (0)20 / 587 76 00	NETHERLANDS	NPP "URALELEKTRA" Sverdlova 11A RU-620027 Ekaterinburg Phone: +7 343 / 353 2745	RUSSIA	Econotec AG Hinterdorfstr. 12 CH-8309 Nürensdorf Phone: +41 (0)44 / 838 48 11	SWITZERLAND	GTS Darulaceze Cad. No. 43 KAT. 2 TR-34384 Okmeydanı-Istanbul Phone: +90 (0)212 / 320 1640	TURKEY
AKHNATON 4 Andrej Ljapchev Blvd. Pb 21 BG-1756 Sofia Phone: +359 (0)2 / 817 6004	BULGARIA	UTEKO A.B.E.E. S. Mavrogenou Str. GR-18542 Piraeus Phone: +30 211 / 1206 900	GREECE	Beijer Electronics AS Postboks 487 NO-3002 Drammen Phone: +47 (0)32 / 24 30 00	NORWAY	Craft Con. & Engineering d.o.o. Bulevar Svetog Cara Konstantina 80-86 SER-18106 Nis Phone: +381 (0)18 / 292-24-45	SERBIA	GTS Darulaceze Cad. No. 43 KAT. 2 TR-34384 Okmeydanı-Istanbul Phone: +90 (0)212 / 320 1640	TURKEY	CSC Automation Ltd. 15, M. Raskova St., Fl. 10, Office 1010 UA-02002 Kiev Phone: +380 (0)44 / 494 33 55	UKRAINE
INEA CR d.o.o. Losinjka 4 a HR-10000 Zagreb Phone: +385 (0)1 / 36 940 -01/-02/-03	CROATIA	MELTRADE Ltd. Fertő utca 14. HU-1107 Budapest Phone: +36 (0)1 / 431-9726	HUNGARY	MPL Technology Sp. z o.o. Ul. Krakowska 50 PL-32-083 Balice Phone: +48 (0)12 / 630 47 00	POLAND	INEA SR d.o.o. Izletnicka 10 SER-113000 Smederevo Phone: +381 (0)26 / 617 163	SERBIA	ILAN & GAVISH Ltd. 24 Shenkar St., Kiryat Arie IL-49001 Petah-Tiqva Phone: +972 (0)3 / 922 18 24	ISRAEL		
AutoCont C.S., s.r.o. Technologická 374/6 CZ-708 00 Ostrava Pustkovec Phone: +420 (0)59 / 5691 150	CZECH REPUBLIC	KAZPROMAUTOM. Ltd. Mustafina Str. 7/2 KAZ-470046 Karaganda Phone: +7 7212 / 50 11 50	KAZAKHSTAN	Sirius Trading & Services Aleea Lacul Morii Nr. 3 RO-060841 Bucuresti, Sector 6 Phone: +40 (0)21 / 430 40 06	ROMANIA	AutoCont Control s.r.o. Radlinského 47 SK-02601 Dolny Kubin Phone: +421 (0)43 / 5868210	SLOVAKIA				



Mitsubishi Electric Europe B.V. /// FA - European Business Group /// Gothaer Straße 8 /// D-40880 Ratingen /// Germany
Tel.: +49(0)2102-4860 /// Fax: +49(0)2102-4861 120 /// info@mitsubishi-automation.com /// www.mitsubishi-automation.com

Specifications subject to change /// Art. no. 218299-A /// 02.2009
All trademarks and copyrights acknowledged.