

Installation Instructions

Introduction

Thank you for purchasing MITSUBISHI Integrated FA Software, MELSOFT series.

This document explains how to install and uninstall MT Works2^(Note-1). Please read carefully before installing the product to your personal computer. See also Setup Guidance (PDF file) in the CD-ROM, which explains how to set up the product.

(Note-1): "MELSOFT MT Works2", which is the package product of the motion controller engineering environment, includes the MT Developer2, which enables system design, programming, debugging and maintenance, and MR Configurator2, which enables servo parameter setting, servo adjustment and servo monitoring.

Product Makeup

Model name	Product name	Quantity
SW1DNC-MTW2-E (English version package)	MELSOFT MT Works2 product (MT Developer2/MR Configurator2) (1 license product) CD-ROM	1
	Installation Instructions	1
	End-user software license agreement	1
	How to register software (ソフトウェア登録のご案内)	1
	License Certificate	1
	Information	1

Precautions

- We do not guarantee any commercially available Microsoft® Windows® Operating System products that are introduced in this manual.
- This software's copyright is owned by Mitsubishi Electric Corporation.
- This software requires one license per computer to be purchased.
- This product (including manual) can be used under the Software License Agreement only.
- We do not take any responsibilities for the consequences of operating this product (including manual).

⚠ Acknowledgements

- Reprinting or reproducing the part or all the contents of this document in any form for any purpose without the permission of Mitsubishi Electric Corporation is strictly forbidden.
- Although we have made the utmost effort to follow the revisions of the software and hardware, in some cases, unsynchronized matter may occur.
- The information in this document may be subject to change without notice.
- We do not take any responsibility for the virus infection and network failure caused by temporary deactivation of antivirus or security software.

Operating Environment

Item	Contents	
Personal computer	Windows® supported personal computer	
Personal computer main body	OS	Microsoft® Windows® 7 English version (64-bit/32-bit) Service Pack: Up to 1 (Enterprise, Ultimate, Professional, Home Premium, Starter) Microsoft® Windows Vista® English version (32-bit) Service Pack: Up to 2 (Enterprise, Ultimate, Business, Home Premium, Home Basic) Microsoft® Windows® XP English version (32-bit) Service Pack: 2,3 (Professional, Home Edition) Microsoft® Windows® 2000 English version Service Pack:4 (Professional)
	CPU	Desktop PC: Intel® Celeron® Processor 2.8GHz or higher Laptop PC : Intel® Pentium® M Processor 1.7GHz or higher
	Required memory	1GB or more recommended (For 32-bit edition) 2GB or more recommended (For 64-bit edition)
	Videocard	Video card supporting Microsoft® DirectX® 9.0c or higher
	Available hard disk space	When installing: Available hard disk space 1GB or more When operating: Available virtual memory space 512MB or more
Disk drive	3.5 inch (1.44MB) floppy disk drive ^(Note-1) CD-ROM supported disk drive	
Monitor	Resolution 1024 x 768 pixels or higher	
Communication interfaces	RS-232 port USB port A30CD-PCF SSC I/F card ^(Note-2) A10BD-PCF SSC I/F board ^(Note-2) Ethernet port	

(Note-1): Required when installing the operating system software from a floppy disk.
(Note-2): A30CD-PCF, A10BD-PCF do not support 64-bit version.

Precautions

- The following functions cannot be used when the computer is running under Microsoft® Windows® XP, Microsoft® Windows Vista®, Microsoft® Windows® 7. This product may not perform properly when these functions are used.
 - Activating the application with Windows compatible mode
 - Simplified user switch-over
 - Remote desktop
 - Large fonts (Detail settings of screen property)
 - DPI setting other than that of the normal size (Detail settings of screen property)
- In Windows Vista® and Windows® 7, log in as a user having User authority or higher.
- The following functions cannot be used when the computer is running under Windows® 7.
 - Windows XP Mode
 - Windows Touch

Installation

Install MT Developer2 to a personal computer.

Confirm before installation

- Log on to a personal computer as a user having an attribute of "Administrator" (Computer administration).
- Terminate all the applications running under Microsoft® Windows® Operating System before installation.
- Install this product before mounting any interface devices for communicating with a personal computer or before connecting a personal computer and a motion CPU via USB interface.
- Deactivate temporarily antivirus or security software before installation.

- Insert the CD-ROM to the CD-ROM drive. Double-click "Setup.exe" (Otherwise, it is displayed as "setup".) in the CD-ROM.
- Following the onscreen instructions, select or enter the necessary information.

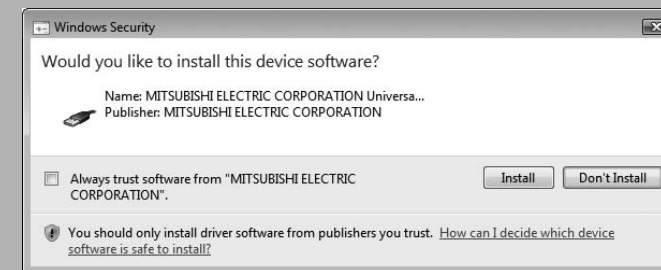
Point

- A serial number is written on the "Software registration card" included with the product. Separate the 12 digit number into 3 and 9 digits and enter it.
- MR Configurator2 is also installed simultaneously. For the details of the MR Configurator2, refer to the "MR Configurator2 SW1DNC-MRC2 INSTALLATION GUIDE".

Precautions

- If the following messages are displayed before completing the installation of this product, the driver must be installed. If the driver is not installed, communication may be partly interrupted. In this case, reinstall MT Developer2.

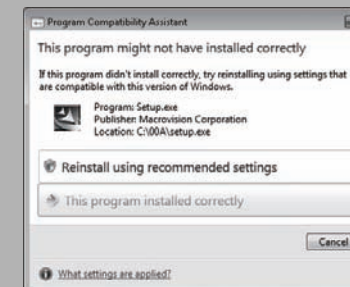
When using Windows Vista®/Windows® 7



- Select "Install" and install the driver.

- If an overwrite install has been done to upgrade the version of MT Developer2 when Microsoft® Windows Vista®/Windows® 7 is used, the following message may be displayed. In this case, select "This program installed correctly".

When using Windows Vista®/Windows® 7



- Select "This program installed correctly"

When using Windows® XP



- Select "Continue Anyway" and install the driver.

Installing the USB driver

In order to communicate with a motion CPU via USB, the USB driver needs to be installed.

When using Windows® 7



1. Connect a personal computer and a PLC CPU with a USB cable, and then turn on the PLC CPU.
2. "Device driver software was not successfully installed" popup window is displayed. Select [Control Panel] – [System and Security] – [Administrative Tools], and select "Update Driver Software" of [Unknown device] in the Device Manager.
3. The [Found New Hardware - Unknown Device] dialog is displayed. Select "Don't search online". Check "Browse my computer for driver software (advanced)", and then set "Easysocket USBDrivers" of the folder where MT Developer2 has been installed. If multiple MELSOFT products are installed previously, refer to their installed location. ("Program Files\MELSOFT\Easysocket\USBDrivers" or "[Folder where this product is installed]\Easysocket\USBDrivers")

When using Windows Vista®



1. Connect a personal computer and a PLC CPU with a USB cable, and then turn on the PLC CPU.
2. The [Found New Hardware] dialog box is displayed. Select "Locate and install driver software (recommended)".
3. The [Found New Hardware - Unknown Device] dialog is displayed. Select "Don't search online". Check "Browse my computer for driver software (advanced)", and then set "Easysocket USBDrivers" of the folder where MT Developer2 has been installed. If multiple MELSOFT products are installed previously, refer to their installed location. ("Program Files\MELSOFT\Easysocket\USBDrivers" or "[Folder where this product is installed]\Easysocket\USBDrivers")

When using Windows® XP



1. Connect a personal computer and a PLC CPU with a USB cable, and then turn on the PLC CPU.
2. The [Welcome to the Found New Hardware Wizard] dialog box is displayed. Select "Install from a list or specific location (Advanced)".
3. The [Please choose your search and installation options] dialog box is displayed. Select "Search for the best driver in these locations". Check "Include this location in the search", and then set "Easysocket USBDrivers" of the folder where MT Developer2 has been installed. If multiple MELSOFT products are installed previously, refer to their installed location. ("Program Files\MELSOFT\Easysocket\USBDrivers" or "[Folder where this product is installed]\Easysocket\USBDrivers")

Point

If the USB driver cannot be installed, confirm the following settings.

[Control Panel] - [System] - [Hardware] - [Driver Signing]

- In [Driver Signing], if "Block - Never install unsigned driver software" is selected, the USB driver may not be installed.
- In [Driver Signing], select "Ignore - Install the software anyway and don't ask for my approval", or "Warn - Prompt me each time to choose an action", and execute the USB driver installation.

When using Windows® 2000 Professional



1. Connect a personal computer and a PLC CPU with a USB cable, and then turn on the PLC CPU.
2. The [Welcome to the Found New Hardware Wizard] dialog box is displayed. Click [Next>], and select "Search for a suitable driver for my device (recommended)".
3. The [Locate Driver Files] dialog box is displayed. Check "Specify a location", and click [Next>]. The dialog box shown above is displayed. Set "Easysocket USBDrivers" where MT Developer2 is installed, and then click [OK]. If multiple MELSOFT products are installed previously, refer to their installed location. ("Program Files\MELSOFT\Easysocket\USBDrivers" or "[Folder where this product is installed]\Easysocket\USBDrivers")

Point

If the USB driver cannot be installed, confirm the following settings.

[Control Panel] - [System] - [Hardware] - [Driver Signing]

- In [Driver Signing], if "Block - Prevent installation of unsigned files" is selected, the USB driver may not be installed.
- In [Driver Subscription], select "Ignore - Install all files, regardless of file signature", or "Warn - Display a message before installing an unsigned file", and execute the USB driver installation.

Uninstallation

Uninstall MT Developer2, MR Configurator2 from a personal computer.

1. Execute the MT Developer2, MR Configurator2 uninstallation from the control panel of Windows.

Microsoft, Windows are and DirectX registered trademarks of Microsoft Corporation in the United States and other countries.

Intel, Celeron and Pentium M are registered trademarks of Intel Corporation in the United States and other countries.

Ethernet is a trademark of Xerox Corporation.

Setup Guidance in the CD-ROM is a PDF file. To view the PDF file, Adobe Reader is required. Download from the Adobe Systems website. Adobe Reader is a trademark or a registered trademark of Adobe Systems Incorporated.

Other company and product names herein are trademarks or registered trademarks of their respective owners.