

# MELSEC L Series

## Programmable controllers

## Innovative Motion Control

Positioning made easy



Advanced and wide-range motion control for up to 16 axes



Various control functions available including speed and torque control, synchronisation and cam control



Software with graphical interface for easy parameterisation



Simple and smart system installation

# Simple Motion - as easy as can be

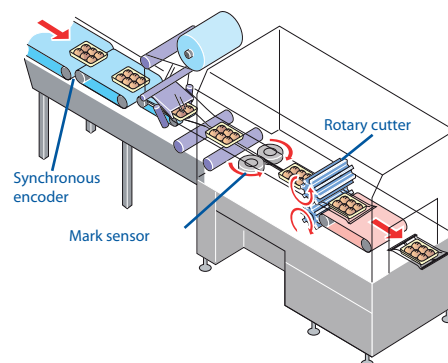


The Simple Motion module is part of the MELSEC L Series which includes a wide range of special modules such as communications, network and I/O modules.

## Impressive range of functions

The standard encoder signal interface and high-speed inputs for mark detection, for example, enable the system to be used in classical serial machines such as packaging and bottling lines or palletising systems without fitting additional optional modules. A function for automatically calculating the cam data for a rotary cutter application simply by entering the product length and the synchronisation width is also included.

Various applications such as XY tables and sealing systems can be easily realised using the positioning functions, which include linear interpolation (up to four axes), circular interpolation (up to two axes) and path

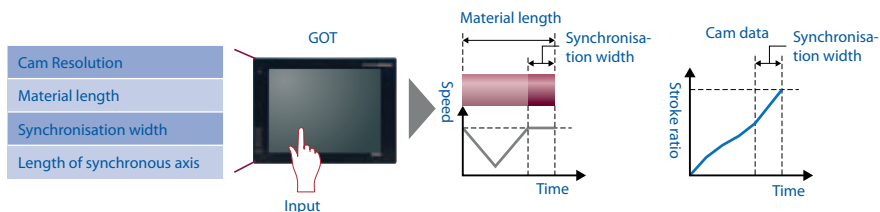


Synchronisation control with synchronous encoder

## Motion control for the L Series

Mitsubishi Electric is expanding the MELSEC L Series with the addition of two Simple Motion modules. The 4 and 16-axis motion modules complement the existing positioning modules and provide the perfect finishing touch to the product range. Various control functions, which have previously been possible only with „pure“ motion controller systems, are provided. These include speed and torque control, synchronisation and cam control. Complex motion control functions can be easily implemented with simple parameterisation and sequence programs using the Simple Motion modules.

control. Proved and tested programs for the MELSEC Q QD75MH module can be used, since the module LD77MH is compatible with the QD75MH.



Automatic generation of cam data for rotary cutter

## Motion made easy

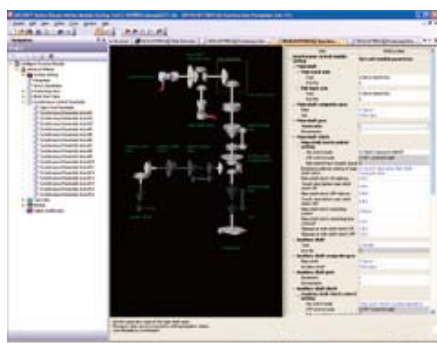
Automatic operation can be easily achieved by entering position addresses, speeds etc. via the sequence program. Powerful additional functions such as M-Code, jump functions, step mode and target address change functions are also available.

Speed and torque control can be used for tension control applications such as winding and unwinding. The control system can be switched between „position control“, „speed and torque control“ and „position control“. This makes it possible to continue to maintain a position with absolute position coordinates even after the control system has been switched over.

Synchronisation and cam functions can be combined in one system when synchronised control is required.

## Simple programming

The motion modules are programmed with the established GX Works2 IEC 61131 software package using standardised PLCopen® function modules. All data can be easily generated by means of special auxiliary functions such as automatic speed calculation, off-line simulation and automatic calculation of auxiliary arcs.



Easy synchronous control parameter Settings



Structure of a system configuration comprising servo amplifiers and servo motors together with an L Series PLC-CPU.

Programming and debugging can be easily carried out from your desk using a PC. All you need is the LD77MH, an L-Series CPU module and a power supply module. Neither the servo motors nor the servo amplifiers need to be connected for programming and testing. This considerably increases efficiency during setup and fault finding.

## High-speed network

The SSCNETIII is a high-speed motion network which has been developed by Mitsubishi Electric based on optical communication. It enables full-duplex communication with transmission speeds of up to 50 MB/s and a guaranteed bus cycle time of 0.44 ms.

The use of fibre optic cables makes communication fully resistant to electrical interference. SSCNETIII users therefore benefit in the form of greater reliability and more flexibility, as the fibre optic cables can be laid anywhere - even next to powerful electric motors.

Mitsubishi Electric servo amplifiers which are compatible with SSCNETIII support various servo motors for a wide range of applications.

## The MELSEC L Series



The compact modular L-Series

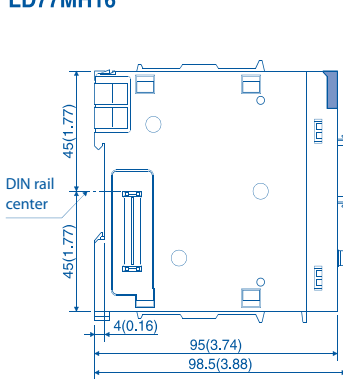
The Simple Motion modules are the latest additions to the MELSEC L Series. The MELSEC L Series includes many other modules such as communications and network modules as well as digital and analogue I/O modules. All CPUs have 24 I/O as standard and can implement many special functions, thus avoiding costs for additional special modules. With its compact design, the new MELSEC L Series simple motion module has all the essential features to ensure maximum system flexibility.

# Specifications ///

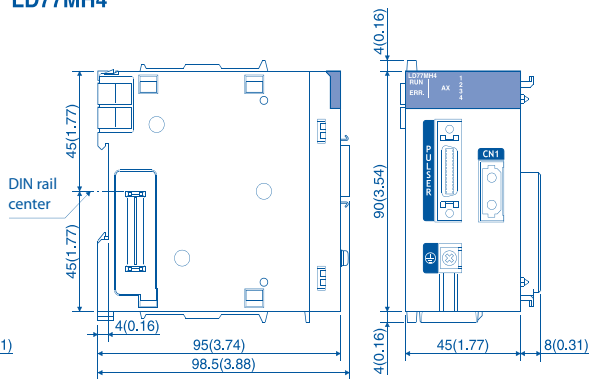
Specifications		LD77MH4	LD77MH16
Number of controllable axes		4	16
Interpolation functions		Linear interpolation for up to 4 axes, circular interpolation for 2 axes	
Output type		SSCNETIII	SSCNETIII
Output signal		Bus	Bus
Servo amplifier		MR-J3-BS and MR-J4-B servo amplifier range (over SSCNETIII)	
Operation cycle		0.88 ms	0.88 ms/1.7 ms
Positioning	Method	PTP (Point To Point) control, path control (linear and arc), speed control, speed-position switching control, position-speed switching control, torque control	
	Acceleration/deceleration control	Trapezoidal acceleration/deceleration, S-curve acceleration/deceleration	
	Compensation	Backlash compensation, Electronic gear, Near pass function	
	OPR control	5 different methods	
Number of positioning points		600 per axis (Can be set with GX Works2 or PLC program)	
External input signals	Encoder	1 Encoder A/B phases	
	High-speed inputs	4 digital inputs [DI1-DI4]	
Cam function	Storage area cam data	256 kBytes	
	Number of cams	Max. 256 (depending on resolution)	
	Resolution per cycle	256, 512, 1024, 2048, 4096, 8192, 16384, 32768	
	Stroke resolution	2 to 16284	

## Dimensions

LD77MH16



LD77MH4



All dimensions in mm

### EUROPEAN BRANCHES

MITSUBISHI ELECTRIC EUROPE B.V. Gothaer Straße 8 D-40880 Ratingen Phone: +49 (0)2102 / 486-0	GERMANY
MITSUBISHI ELECTRIC EUROPE B.V.-org.sl. Radlická 714/113a CZ-158 00 Praha 5 Phone: +33 (0)1 / 55 68 55 68	CZECH REP.
MITSUBISHI ELECTRIC EUROPE B.V. 25, Boulevard des Bouvets F-92741 Nanterre Cedex Phone: +33 (0)1 / 55 68 55 68	FRANCE
MITSUBISHI ELECTRIC EUROPE B.V. Viale Colleoni 7 I-20041 Agrate Brianza (MB) Phone: +39 039 / 60 53 1	ITALY
MITSUBISHI ELECTRIC EUROPE B.V. Krakowska 50 PL-32-083 Balice Phone: +48 (0)12 / 630 47 00	POLAND
MITSUBISHI ELECTRIC EUROPE B.V. 52, bld. 3 Kosmodamianskaya nab 8 floor RU-115054 Moscow Phone: +7 495 721-2070	RUSSIA
MITSUBISHI ELECTRIC EUROPE B.V. Carrera de Rubí 76-80 E-08190 Sant Cugat del Valles (Barcelona) Phone: 902 131121 // +34 935653131	SPAIN
MITSUBISHI ELECTRIC EUROPE B.V. Travellers Lane UK-Hatfield, Herts. AL10 8XB Phone: +44 (0)1707 / 27 61 00	UK

### EUROPEAN REPRESENTATIVES

GEVA Wiener Straße 89 AT-2500 Baden Phone: +43 (0)2252 / 85 55 20	AUSTRIA	Beijer Electronics A/S Lykkegårdsvej 17 DK-4000 Roskilde Phone: +45 (0)46 / 75 76 66	DENMARK	ALFATRADE Ltd. 99, Paola Hill Malta- Paola PLA 1702 Phone: +356 (0)21 / 697 816	MALTA	Sirius Trading & Services Aleea Lacul Morii Nr. 3 RO-060841 Bucuresti, Sector 6 Phone: +40 (0)21 / 430 40 06	ROMANIA	Beijer Electronics AB Box 426 SE-20124 Malmö Phone: +46 (0)40 / 35 86 00	SWEDEN	I.C. SYSTEMS LTD. 23 Al-Saad-Al-Alee St. EG- Sarayat, Maadi, Cairo Phone: +20 (0) 2 / 235 98 548	EGYPT
TECHNIKON Oktyabrskaya 19, Off. 705 BY-220030 Minsk Phone: +375 (0)17 / 210 46 26	BELARUS	Beijer Electronics Eesti OÜ Pärnu mnt.1601 EE-11317 Tallinn Phone: +372 (0)6 / 51 81 40	ESTONIA	INTEHISIS srl Traian 23/1 MD-2060 Kishinev Phone: +373 (0)22 / 66 4242	MOLDOVA	INEA RBT d.o.o. Izletnicka 10 SER-113000 Smederevo Phone: +381 (0)26 / 615 401	SERBIA	Omni Ray AG Im Schörl 5 CH-8600 Dübendorf Phone: +41 (0)44 / 802 28 80	SWITZERLAND	ILAN & GAVISH Ltd. 24 Shenkar St., Kiryat Arie IL-49001 Petah-Tiqva Phone: +972 (0)3 / 922 18 24	ISRAEL
ESCO D & A Culliganlaan 3 BE-1831 Diegem Phone: +32 (0)2 / 717 64 30	BELGIUM	Beijer Electronics OY Peltioie 37 FIN-28400 Ulvila Phone: +358 (0)207 / 463 540	FINLAND	HIFLEX AUTOM. B.V. Haarlerbergweg 21-23 NL-2984 CD Ridderkerk Phone: +31 (0)180 - 46 60 04	NETHERLANDS	SIMAP s.r.o. Jána Derku 1671 SK-911 01 Trenčín Phone: +421 (0)32 743 04 72	SLOVAKIA	GTS Bayraktar Bulvarı Nutuk Sok. No:5 TR-34775 Yukarı İSTANBUL Phone: +90 (0)216 526 39 90	TURKEY	GIRIT CELADON LTD 12 Haomanut Street IL-42505 Netanya Phone: +972 (0)9 / 863 39 80	ISRAEL
Koning & Hartman b.v. Woluwelaan 31 BE-1800 Vilvoorde Phone: +32 (0)33 / 921 164	BELGIUM	UTECO S, Mavrogenous Str. GR-18542 Piraeus Phone: +30 211 / 1206 900	GREECE	Koning & Hartman b.v. Haarlerbergweg 21-23 NL-1101 CH Amsterdam Phone: +31 (0)20 / 587 76 00	NETHERLANDS	PROCONT, spol. s r.o. Prešov Küpeľná 1/A SK-080 01 Prešov Phone: +421 (0)51 7580 611	SLOVAKIA	CSC Automation Ltd. 4-B, M. Raskovoyi St. UA-02660 Kiev Phone: +380 (0)44 / 494 33 55	UKRAINE	CEG INTERNATIONAL Cebaco Center/Block A Autostrade DORA Lebanon - Beirut Phone: +961 (0)1 / 240 430	LEBANON
INEA RBT d.o.o. Aleja Lipa 56 BA-71000 Sarajevo Phone: +387 (0)33 / 921 164	BOSNIA AND HERZEG.	MELTRADE Kft. Fertő utca 14. HU-1107 Budapest Phone: +36 (0)1 / 431-9726	HUNGARY	Beijer Electronics AS Festboks 487 NO-3002 Drammen Phone: +47 (0)32 / 24 30 00	NORWAY	INEA RBT d.o.o. Küpeľná 1/A SI-1000 Ljubljana Phone: +386 (0)1 / 513 8116	SLOVENIA	Systemgroup 2 M. Krivonoski St. UA-03680 Kiev Phone: +380 (0)44 / 490 92 29	UKRAINE	CBI Ltd. Private Bag 2016 ZA-1600 Isando Phone: +27 (0)15 / 977 0770	SOUTH AFRICA
AKHNATON 4, Andrei Ljapchev Blvd., PO Box 21 BG-1756 Sofia Phone: +359 (0)2 / 817 6000	BULGARIA	00 Kazpromavtomatika Ul. Zhambyla 28 KAZ-100017 Karaganda Phone: +7 7212 / 50 10 00	KAZAKHSTAN	Fonseca S.A. R. João Francisco do Casal 87/89 PT- 3801-997 Aveiro, Esigueira Phone: +351 (0)234 / 303 900	PORTUGAL						
INEA RBT d.o.o. Losinjka 4 a HR-10000 Zagreb Phone: +385 (0)1/36940-01/-02/-03	CROATIA	Beijer Electronics SIA Ritausmas iela 23 LV-1058 Riga Phone: +371 (0)784 / 2280	LATVIA								
AutoCont. S.s.r.o. Technologická 374/6 CZ-708 00 Ostrava-Pustkovec Phone: +420 595 691 150	CZECH REPUBLIC	Beijer Electronics UAB Savanoriu Pr. 187 LT-02300 Vilnius Phone: +370 (0)5 / 232 3101	LITHUANIA								



Version check



Mitsubishi Electric Europe B.V. /// FA - European Business Group /// Gothaer Straße 8 /// D-40880 Ratingen /// Germany  
Tel.: +49(0)2102-4860 /// Fax: +49(0)2102-4861120 /// info@mitsubishi-automation.com /// www.mitsubishi-automation.com

Specifications subject to change /// Art. no. 253267-A /// 08.2012

All trademarks and copyrights acknowledged.