

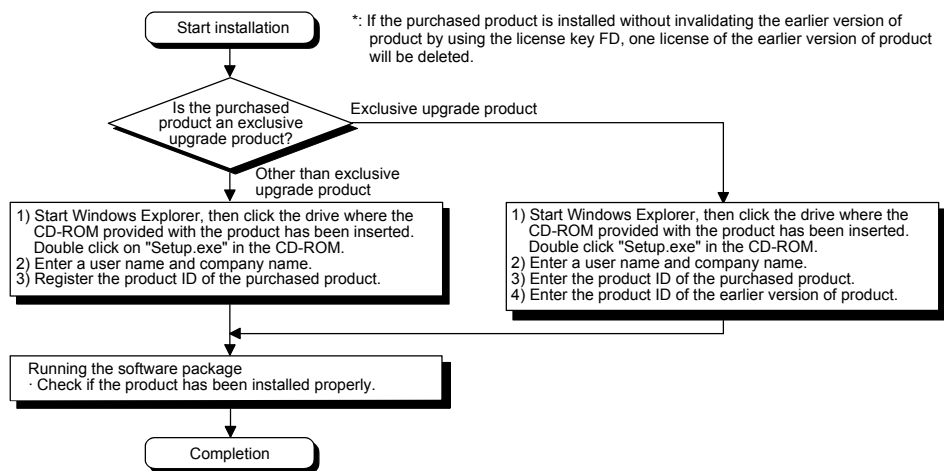
Method of installing the MELSOFT Series

Thank you for purchasing the engineering software, MELSOFT series.
In order to use this product, install the component to the personal computer according to the following procedure.

[Procedures for Installing and Uninstalling]

- Make sure to close all running applications before installation.
Installation under running another application may cause abnormal operation of the product.
- When installing multiple products, install the GX Developer first.
- When using any of the following operating systems, log on as a user who has the administrator attributes.
Windows® 10^{*1}, Windows® 8.1^{*2}, Windows® 8^{*3}, Windows® 7^{*4}, Windows Vista®^{*5}, Windows® XP^{*6}, Windows® 2000 Professional, Windows NT® Workstation 4.0
- Along with this document, refer to the manual on the CD-ROM provided with the product to learn about the operating environment and the procedures for installing and uninstalling.
- The supported operating systems differ by each product; therefore, some MELSOFT products cannot be used together.
- When installing MELSOFT to a Windows Vista® or later-based personal computer, read the technical bulletin FA-A-0008/FA-A-0091/ FA-A-0153/FA-A-0207.
*1: Windows 10(Home, Pro, Enterprise, Education)
*2: Windows 8.1, Windows 8.1(Pro, Enterprise)
*3: Windows 8, Windows 8(Pro, Enterprise)
*4: Windows 7(Starter, Home Premium, Professional, Ultimate, Enterprise)
*5: Windows Vista(Home Basic, Home Premium, Business, Ultimate, Enterprise)
*6: Windows XP(Professional, Home)
- GX Developer Version 8.500W or later is not supported following operating systems.
Windows 2000(Professional), Windows NT Workstation 4.0, Windows Millennium Edition, Windows 98, Windows 95
The latest installer (GX Developer Version 8.119Z) which supports the operating systems above can be obtained from MITSUBISHI ELECTRIC FA Global Website.

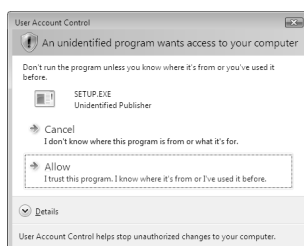
(1) Installation procedure



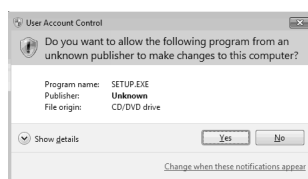
- If the confirmation screen appears during the installation, continue the installation according to the instruction on the screen.
- If any of the following screens appears, perform the operation instructed for respective screens.

(Screen 1) Select "Allow" or "Yes".

< Windows Vista® >

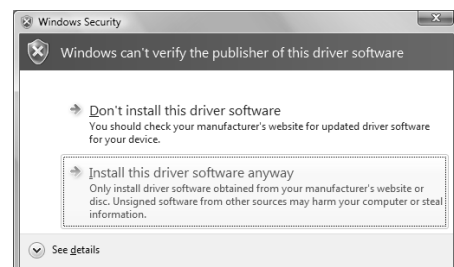


< Windows® 7 or later*7 >



*7: Although the displayed screen may differ for some operating systems, the operation is the same.

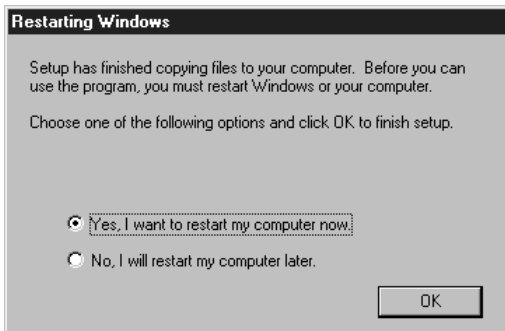
(Screen 2) Select "Install this driver software anyway".



(Continued on the reverse side)

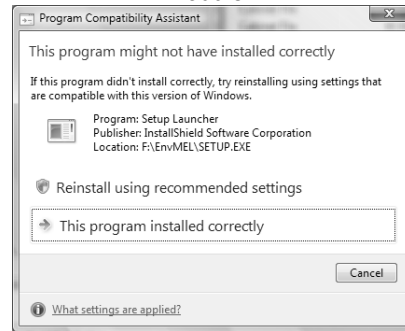
- The following screens may appear after the installation is completed.

(Screen 3) Restart the personal computer according to the instruction on the screen.



(Screen 4)

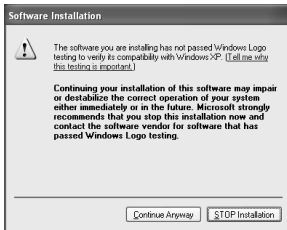
Select "This program installed correctly". Do not choose "Reinstall using recommended settings", because the installer installs an incorrect module.



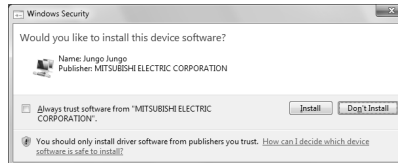
- If you install this product while running the PWS (Personal Web Server), [ComponentMoveData Error Information] will be displayed and the product may not be installed properly. In case of the error, close the PWS and restart the personal computer, and then try installing the product again.
- The following screen will appear when the product is installed for the first time or the USB Driver is installed. In this case, click "Continue Anyway" and continue the installation. (We have checked the operation and assured that the system operates without any problem by performing this procedure.)

(When installing the product for the first time)

Windows XP



Windows Vista or later*8



*8: Although the displayed screen may differ for some operating systems, the operation is the same.

(When installing the USB Driver)

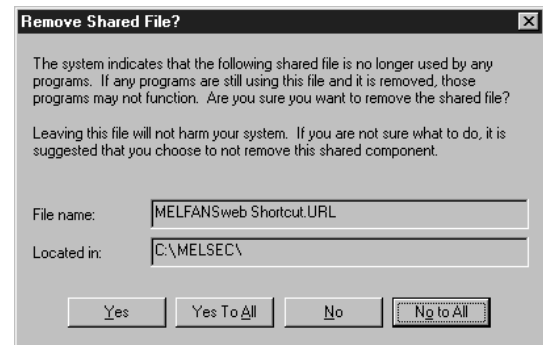
Windows XP



(2) Uninstallation procedure

1. Uninstall the product from the control panel of Windows®.

- If the right screen appears during the uninstall procedure, click the "No to All" button.



[Regarding the Manual]

- The manual for this product is stored in the "Manual" folder on the accompanying CD-ROM.
- Adobe® Reader® is required in order to read the "Manual" (PDF data) on the CD-ROM. Adobe Reader can be downloaded from the Adobe Systems Incorporated web site.
- Refer to the readme.txt in the "Manual" folder, which contains the manual documents stored on the CD-ROM.

Microsoft, Windows, Windows NT, Windows Vista, and Windows XP are either registered trademarks or trademarks of Microsoft Corporation in the United States and/or other countries.

Adobe and Reader are either registered trademarks or trademarks of Adobe Systems Incorporated in the United States and/or other countries.

The company names, system names and product names mentioned in this manual are either registered trademarks or trademarks of their respective companies.

In some cases, trademark symbols such as '™' or '®' are not specified in this manual.