

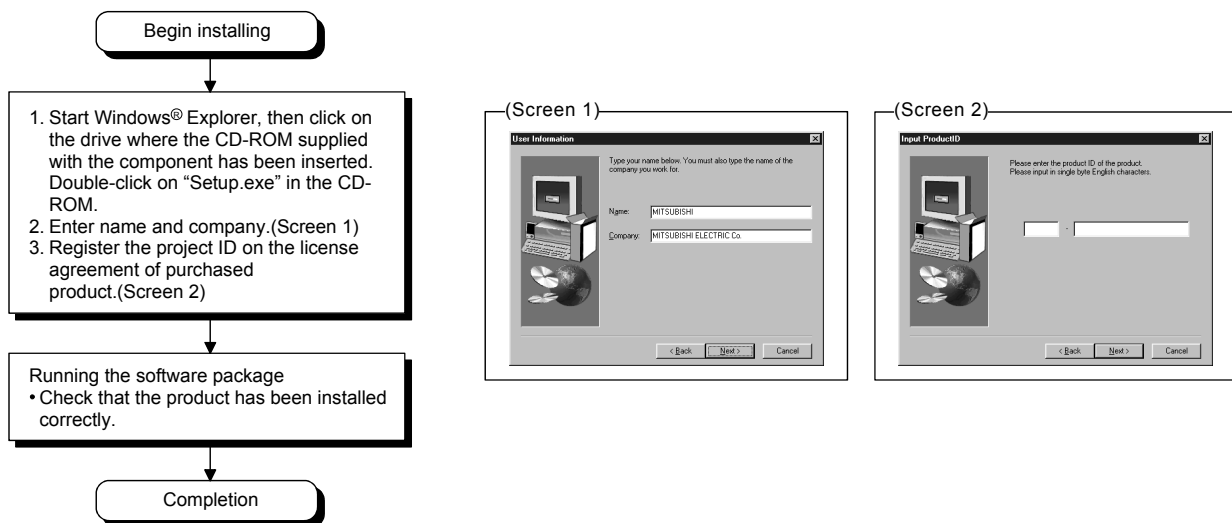
## Method of installing the PX Developer/ PX Developer Monitor Tool

Thank you for choosing the Mitsubishi integrated FA Software MELSOFT Series PX Developer/PX Developer Monitor Tool. The components can be used after it has been installed in the personal computer according to the following procedure.

### [Procedures for Installing and Uninstalling]

- For PX Developer (SW1D5C-FBDQ-E), Programming Tool and Monitor Tool are installed. Only can the programming tool be installed in Windows® 98 or Windows® Millennium Edition.
- For PX Developer Monitor Tool (SW1DNC-FBDQMON-E), only Monitor Tool is installed.
- PX Developer and PX Developer Monitor Tool cannot be installed on the same personal computer.
- When using the following Operating System, log on as the user who has the Administrator attributes. Windows® 10<sup>\*1</sup>, Windows® 8.1<sup>\*2</sup>, Windows® 8<sup>\*3</sup>, Windows® 7<sup>\*4</sup>, Windows Vista®<sup>\*5</sup>, Windows® XP<sup>\*6</sup>, Windows® 2000 Professional, Windows NT® Workstation Version 4.0
- Make sure to close all running applications before installation. Installation under running another application may cause abnormal operation of the product.
- For details of the installation precautions, refer to "GX Works2 Installation Instructions" or "GX Developer Version 8 Operating Manual (Startup)" when necessary.
- When installing MELSOFT to Windows® 8.1, Windows® 8, Windows® 7 or Windows Vista® based personal computer, read the technical bulletin FA-A-0008, FA-A-0091, or FA-A-0153.
  - \*1: Windows® 10 (Home, Pro, Enterprise, Education)
  - \*2: Windows® 8.1, Windows® 8.1 (Pro, Enterprise)
  - \*3: Windows® 8, Windows® 8 (Pro, Enterprise)
  - \*4: Windows® 7 (Starter, Home Premium, Professional, Ultimate, Enterprise)
  - \*5: Windows Vista® (Home Basic, Home Premium, Business, Ultimate, Enterprise)
  - \*6: Windows® XP (Professional, Home)
- For Windows® 10, Windows® 8.1, Windows® 8, Windows® 7 or Windows Vista®, refer to the manual on the CD-ROM provided with the product.

#### (1) Installation procedure



\* Microsoft® Data Access Components 2.5 or later is necessary for using Monitor Tool. If there is not Microsoft® Data Access Components 2.5 installed in the system, execute "\Update\mdac\_typ.exe" in CD-ROM to install this software.

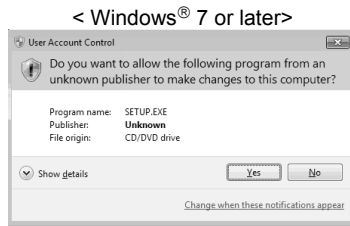
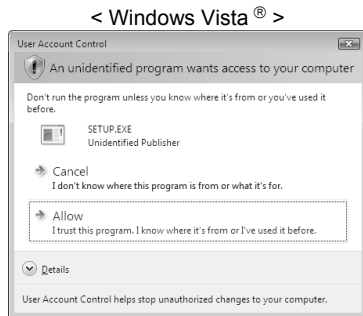
The following points should be notified when installing Microsoft® Data Access Components 2.5.

As some applications work with older version of Microsoft® Data Access Components 2.5, if version 2.5 of Microsoft® Data Access Components is installed, maybe these applications can not work as usual. Therefore install Microsoft® Data Access Components 2.5 after confirmed those applications are compatible with it.

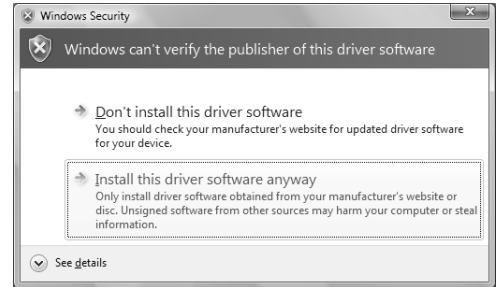
(Continued on the reverse side)

- \* If the confirmation screen appears during the installation, continue the installation according to the instruction on the screen.
- \* If any of the following screens appears, perform the operation instructed for respective screens.

(Screen 1) Select "Allow" or "Yes".

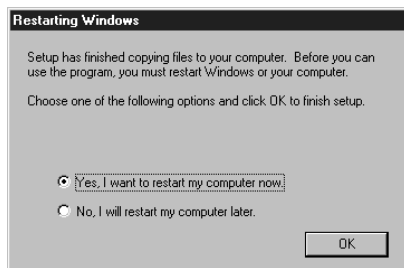


(Screen 2) Select "Install this driver software anyway".

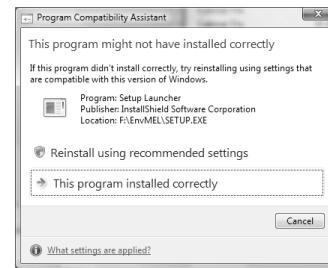


- \* The following screens may appear after the installation is completed.

(Screen 3) Restart the personal computer according to the instruction on the screen.



(Screen 4) Select "This program installed correctly". Do not choose "Reinstall using recommended settings", because the installer installs an incorrect module.



- \* The following screen will appear when the product is installed for the first time or the USB Driver is installed under Windows® XP. In this case, click "Continue Anyway" and continue the installation. (We have checked the operation and assured that the system operates without any problem by performing this procedure.)

(When installing the product for the first time)



(When installing the USB Driver)



## (2) Uninstallation procedure

Uninstall the product from the control panel of Windows®.

- \* If the dialog box which confirms deletion of common file appears during the uninstall procedure, click the "No To All" button.

## [Regarding the Manual]

- (1) The manual (PDF data) for this product is stored in the "Manual" folder on the accompanying CD-ROM. This manual sometimes can be displayed after startup the product. (Refer to the PX Developer Operating Manual about the details.)
- (2) Adobe Reader is required in order to read the "Manual" (PDF data) in the CD-ROM. The Adobe Reader installer is stored in the "Manual" – "Acrobat" folder found on the CD-ROM.
- (3) Refer to the readme.txt in the "Manual" folder, which contains the "Manual" documents stored in the CD-ROM and the method for installing Adobe Reader.

Microsoft, Windows, Windows NT, Windows Vista are trademarks or registered trademarks of Microsoft Corporation in the United States and other countries.

Adobe is a trademark or a registered trademark of Adobe Systems Incorporated.