

Before Using the Product

Please read this document before use. Keep the document for future reference and make sure that end users read this.

SAFETY PRECAUTIONS

(Read these precautions before using the product)

Since the safety precautions for the product are the same as those for the C Controller module, refer to the manual supplied with the C Controller module.

Packing list

Model name	Item	Qty.
	Engineering tool for C Controller, CW Workbench DVD-ROM	1
SW1DND-CWWLQ12-E (Product with license)	Before Using the Product (this document)	1
	Software License Agreement	1
	Permanent License Application Form (sample)	1
SW1DND-CWWLQ12-EZ (Additional license product)	License Agreement	1
	Before Using the Product (this document)	1
	Software License Agreement	1
	Permanent License Application Form (sample)	1
	License Agreement	1

1. OUTLINE

This product is software to offer dedicated integrated development environment to offer a user program executed in the C Controller module. The product supports the Q12DCCPU-V only. This document outlines information such as how to install the product and how to apply for a permanent license. For details of the product, refer to the "CW Workbench Operating Manual". The product is a subset product of the conventional product Wind River Workbench. For comparison of the products, refer to Chapter 4.

1.1 License

The product can be installed by selecting one of the following licenses:

- Temporary license**
The license offers a 31-day trial usage. To install the product on a personal computer using a temporary license, the computer must be connected to the Internet. If the computer cannot be connected to the Internet, install the product using a permanent license or an install key stored in the DVD-ROM. After the trial period, the project creation, build/compile, and debug functions cannot be used.
- Permanent license**
This is a regular license. To install the product using a permanent license, refer to Chapter 3 and apply for a permanent license.
- License obtained using an install key stored in the DVD-ROM**
The license can be installed on a computer that cannot be connected to the Internet before a permanent license is obtained. Under this license, the project creation, build/compile, and debug functions cannot be used.

1.2 Relevant documents

Name
CW Workbench Operating Manual This guidebook describes system configuration, installation/uninstallation, functions, and troubleshooting of the product. A PDF file of the manual is stored in the DVD-ROM supplied with the product. <SH-080982ENG, 13JU71>
Wind River Workbench 3.2 manuals The manuals describe specifications, usage methods, troubleshooting, and relevant documents of Wind River Workbench 3.2. Refer to the manuals for the same functions as Wind River Workbench. A PDF file of the manuals is stored in the DVD-ROM supplied with the product. <SH-080766ENG, 13JY80>
C Controller Module User's Manual (Hardware Design, Function Explanation) The manual describes system configuration, specifications, functions, handling methods, wiring and troubleshooting of the C Controller module. <SH-080767ENG, 13JY80>
C Controller Module User's Manual (Utility Operation, Programming) The manual describes installation/uninstallation of SWDPVC-CCPU, utility operations, and functions and programming. <SH-080767ENG, 13JY81>

2. HOW TO INSTALL CW WORKBENCH

2.1 Precautions

- Stop all other applications running on Windows before installation.
- The installer may not operate the functions properly due to the automatic start of update programs of the operating system or any other software, such as Windows or Java Update. Change the setting to disable the automatic start of update programs before installation.
- The product cannot be overinstalled on a computer where the product has been already installed. Uninstall the product before reinstallation.
- Do not install the product on a computer where Wind River Workbench has been installed. If Wind River Workbench has been installed, uninstall it before installing the product. Or install the product on another personal computer.
- For the operating environment of the product, refer to the "CW Workbench Operating Manual".
- A computer must be connected to the Internet to install the product using a temporary license. If a computer cannot be connected to the Internet, use a permanent license or an install key stored in the DVD-ROM to install the product.

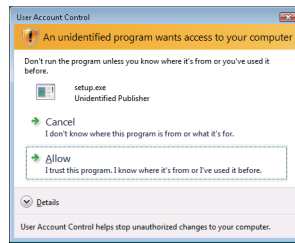
2.2 How to Install the Product

Below is the installation procedure. Windows and dialog boxes of Windows XP are used for explanation, except as when operations differ depending on the operation systems.

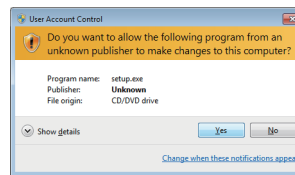
- Log on as a user with the Administrator attribute.
- Insert a DVD-ROM disc supplied with the product into the DVD-ROM drive.

3. For Windows Vista and Windows 7, the following dialog box may appear.

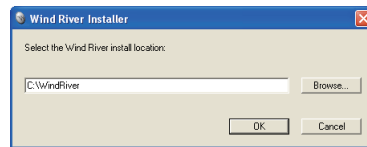
<For Windows Vista>
Click "Allow".



<For Windows 7>
Click the "Yes" button.



4. The following dialog box appears.



If the dialog box above does not appear, execute "setup.exe" within the DVD-ROM.

Remark

Do not execute more than one "setup.exe" at the same time. Doing so may lead to incomplete installation. Uninstall the product before reinstallation.

5. Enter a folder name of the installation location. Click the "OK" button. (Click the "Browse" button to select a folder from the tree view.)

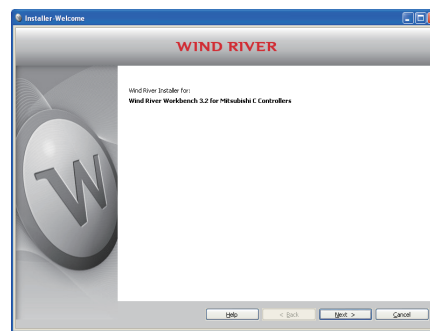
Remark

The following characters can be used for a folder name of the installation location:

- Alphanumeric characters
- Hyphen (-) and underscore (_)

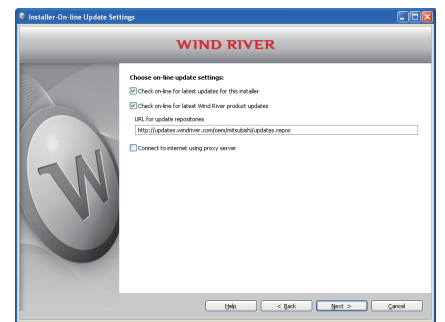
The product cannot be properly installed if characters other than those described above are used for a folder name.

6. Click the "Next" button.

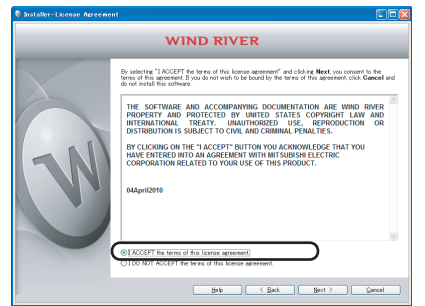


7. Click the "Next" button.

If the computer is connected to the Internet via a proxy server, check the box of "Connect to internet using proxy server" and configure the proxy server setting set for the Internet connection on the computer.



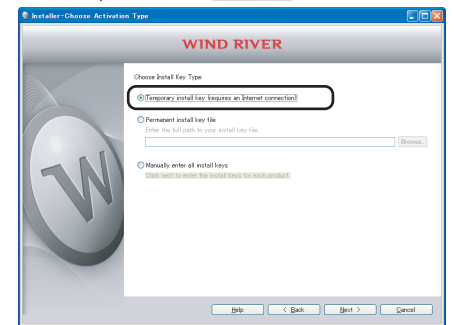
8. Check the displayed content and select "I ACCEPT the terms of this license agreement." Click the "Next" button.



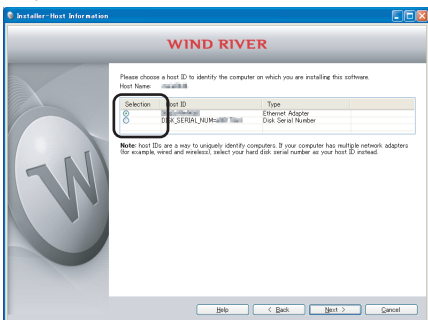
9. Operations differ depending on license types.

9.1. For installation using a temporary license

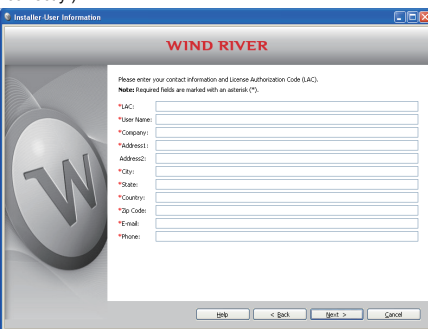
9.1.1. Select "Temporary install key (requires an Internet connection)", and click the "Next" button.



9.1.2. Check the content of "Note" on the window. Select "Ethernet Adapter" or "Disk Serial Number". Click the "Next" button.



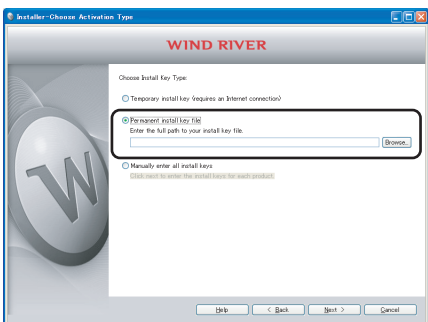
9.1.3. Enter information such as a name and a company name with alphanumeric characters and symbols. Click the "Next" button. (Items with a * mark must be entered correctly.)



Enter an "LAC" described in the "License Agreement" for the "LAC" column.

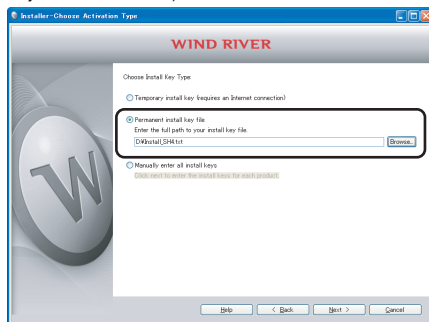
9.2. For installation using a permanent license

9.2.1. Select "Permanent install key file" and enter the full file name of the permanent license file. Click the "Next" button. (Click the "Browse" button to select a permanent license file from the tree view.)



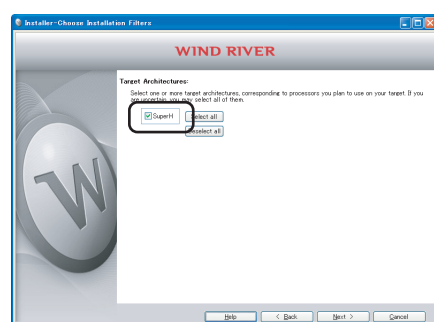
9.3. For installation using a license with an install key stored in the DVD-ROM

9.3.1. Select "Permanent install key file" and enter the full file name of the install key stored in the DVD-ROM. Click the "Next" button. (Click the "Browse" button to select the install key from the tree view.)



(For the file name of the install key, enter "D:\Install_SH4.txt". (This is when the DVD-ROM drive is D:))

10. Check that "SuperH" has been selected. Click the "Next" button.



11. Check that "Wind River Workbench 3.2 for Mitsubishi C Controllers" has been selected. Click the "Install" button.

If the check box is or , keep clicking the box until it changes to .



12. Follow the remaining on-screen instructions.

3. HOW TO APPLY FOR PERMANENT LICENSE

3.1 How to Apply for Permanent License

1. Enter information such as "LAC" and "Product ID" in the "Permanent License Application Form". (Use a Permanent License Application Form in

"D:\PermanentLicenseApplicationForm.xls". (This is when a DVD-ROM drive is D:.)

- Enter an "LAC" described in the "License Agreement" for the "LAC" column.
- Enter a "Product ID" described in the "Product ID sticker" stuck on the "License Agreement" for the "Product ID" column.
- Refer to "How to obtain a host name" and "How to obtain a host ID" in the "Permanent License Application Form" supplied with the product to enter information for the "Host Name", "MAC", and "DISK" columns.

2. E-mail "Permanent License Application Form" to the address described in the "Permanent License Application Form".

3. A permanent license file will be e-mailed to you within 5 working days.

4. If CW Workbench has been installed using a temporary license or an install key, a permanent license file must be applied to the product.

For how to apply a permanent license file, refer to the "Applying Permanent License" section in the "CW Workbench Operating Manual".

3.2 License Transfer Certification Agreement Form

To exchange a computer where the product has been installed after application for a permanent license, apply for a license transfer. Refer to the following instructions.

1. Uninstall the product in a computer that has been used (excluding a case where a computer is broken and a product cannot be uninstalled).

For uninstallation, refer to the "CW Workbench Operating Manual".

2. Delete the permanent license file.

For how to delete the permanent license file, refer to the "Deleting Permanent License" section in the "CW Workbench Operating Manual".

3. Enter information such as "Product ID" and "Host Name" in the "License Transfer Certification Agreement Form" in the "Permanent License Application Form".

4. Print out the "License Transfer Certification Agreement Form". Fill out your name and company name and sign.

5. Fax the "License Transfer Certification Agreement Form" to your local Mitsubishi service center or representative where the product has been purchased.

6. A permanent license file will be e-mailed to you within 5 working days after the Form is received.

7. Install the product on the computer that has been exchanged by using the newly-acquired permanent license file.

4. COMPARISON BETWEEN THE PRODUCT AND WIND RIVER WORKBENCH

Differences in the specifications between the product and Wind River Workbench 2.6 are listed below.

Item	Wind River Workbench 2.6	CW Workbench
Operating system		
Microsoft® Windows® XP Professional Operating System Service Pack3 or later	○	○
Microsoft® Windows Vista® Business Operating System	×	○
Microsoft® Windows Vista® Ultimate Operating System	×	○
Microsoft® Windows Vista® Enterprise Operating System	×	○
Microsoft® Windows®7 Professional Operating System	×	○
Microsoft® Windows®7 Enterprise Operating System	×	○
Microsoft® Windows®7 Ultimate Operating System	×	○
Framework		
Eclipse (basic functions of Workbench)	Ver.3.2	Ver.3.5

Item	Wind River Workbench 2.6	CW Workbench
Compiler		
SH7750gnule (a compiler for the C Controller module (GCC for SH-4A Little Endian compiler))	○	○
SIMNTgnu (a compiler for VxSim (GCC for VxWorks Simulator Windows compiler))	○	×
Project and build system (project creation and management)		
VxWorks Downloadable Kernel Module Project (a project to be used for normal applications development. It creates applications executed in kernel mode of VxWorks6.x.)	○	○
Debugger		
Agent for target connections (functions to establish connections with the C Controller module to be debugged)	○	○
Wind River VxWorks Simulator (simulation functions to enable a debug function by operating Wind River VxWorks applications on the operating system of a computer without the C Controller module)	○	×
Download (functions to download a file to be debugged on the C Controller module and to start a debug session)	○	○
Debug operation (functions to debug source codes with operations such as debug session start/termination and step-through execution)	○	○
Command-line interface		
Target shell (a command-line interface that operates on the operating system of the C Controller module)	○	○
Runtime analysis tool		
MemScope (specifying memory leak locations by monitoring memories)	○	×
ProfileScope (analyzing a bottleneck part of a task by analyzing code executing situation statistically)	○	×
StethoScope (analyzing memory leaks by monitoring variables and data structures in real time)	○	×
System Viewer (analyzing task execution orders and a deadlock by monitoring information such as an interrupting task situation and CPU utilization)	○	×
Extended functions (extending functions by installing plug-in software provided by the third parties)	○	○

Microsoft, Windows, Windows NT, and Windows Vista are registered trademarks of Microsoft Corporation in the United States and other countries. All other company names and product names used in this document are trademarks or registered trademarks of their respective companies.

Internet Information Service (MELFANSweb)

From the FA-LAND on the MELFANSweb, you can download trial-version software and software updates, retrieve and read online MELSEC-series manuals, and use a FAQ list. For these services, ID registration to FA-LAND (for free) is required.

MELFANSweb site
http://www.MitsubishiElectric.co.jp/melfansweb

In regions other than Japan, please contact your local Mitsubishi representative.