



- HMI
- Servo System
- Stepper System
- PLC
- VFD
- Fieldbus

Automation Solutions for Global Customers



Headquarter office in Shanghai

About Kinco

Kinco Automation is a private company dedicated in the development and production of automation products and solutions. Kinco has developed full line of HMI products, AC servo drivers and motors, stepper drivers, PLC and field bus products. Since its founding in 1996, Kinco has become a leading supplier of machine automation solutions in China.

Kinco has built five R&D facilities in China and Germany. Kinco is making its best to develop first-rate automation products, helping customers build better machines at more competitive cost.

----- Our Brands: **Kinco**



Kinco(Shenzhen)



JAT Kinco(Shenzhen)



Kinavo(Changzhou)

CONTENTS

1

Human-Machine Interface
Kinco is a leader of China industrial HMI market. Full line of products, easy-to-use screen edit software and impressive cost performance are the unique competitive edge of Kinco HMI.

- MT6000
- MT5000
- MT4000
- Text HMI

4

Kinco PLC
Kinco PLC win low-end and middle-end customers' approval with its outstanding cost performance and concise practical functions.

Products:K3 series.

2

Servo System
CD series general use servo system
Product series:CD120/CD420/CD430/CD620

JD series CAN bus servo system
Product series:JD430/JD620

ED series programmable bus communication servo system
Product series:ED420/ED630

5

VFD
Kinco vector VFD undertakes the company concept of "Provide high quality, high performance, high stability products", it is a high performance vector VFD. FV100 series is closed loop vector VFD, has V/F, open vector, closed vector control function. And the closed loop vector control level is at the leading position of china. SV100 series is open loop vector VFD, has V/F, open vector control function. Besides the high performance vector control, it is also high cost-effective.

3

Stepper System
Kinco owns full line of stepper products. Kinco Classic Series stepper has a long reputation of reliable quality and good cost performance; the brand new N Series stepper utilize complete digital technology derived from servo technology platform imported from Germany. N Series is widely used in electronic manufacturing, laser device, engraving, packaging and medical device industries.

- N Series high performance full-digital stepper driver
- Classic Series stepper driver
- Stepper motor

6

Field Bus Products
Many of Kinco's products are capable of field bus communication, including HMI, PLC, servo drivers, I/O modules incorporating Ethernet/CANopen/Profibus-DP connectivities.

HMI

HMI

MT6000 series Open HMI

Powerful Marvell PXA270 RISC CPU
User-friendly Windows CE OS



MT5000 Series High-end HMI

Powerful Marvell PXA270 RISC CPU
Linux OS with high efficiency



Introduction:

MT6000 series is Kinco open HMI with PXA270 RISC CPU and Windows CE OS. MT6000 are designed under the "open" concept and suitable for versatile applications such as industrial automation, building automation and intelligent home management system.

Features:

1. WinCE 5.0 OS and open architecture give customers free to develop versatile applications;
2. PLC-HMI all-in-one solution, with CoDeSys;
3. SDK and tools available for proprietary application development;
4. Serial ports, USB Host/Client ports, Ethernet and CANopen interfaces;

Technical Specification

Model:	MT6300C	MT6300T	MT6400T	MT6500T
	MT6300C-CAN	MT6300T-CAN	MT6400T-CAN	MT6500T-CAN
Size of Display	5.6"	5.7"	8"	10.4"
Resolution	320 × 234	320 × 240	640 × 480	640 × 480
Color	65536 colors	65536 colors	65536 colors	65536 colors
Brightness	300cd/m ²	500cd/m ²	350cd/m ²	400cd/m ²
CPU	32-bit 520MHz RISC			
Backlight	LED	1CCFL	1CCFL	2CCFL
Power Consumption	7.2W	7.2W	10.8W	12W
Rated Voltage	DC 24V	DC 24V	DC 24V	DC 24V
Operation Temp.	0~45℃	-10~70℃	0~45℃	0~45℃
Cutout Size	192 × 138mm	192 × 138mm	224 × 161mm	298 × 218mm
Weight	1.12kg	1.12kg	1.28kg	1.97kg
CE Certificate	EN61000-6-2:2005, EN61000-6-4:2007			
FCC compliance	Comply with FCC Class A directory			
Notes	MT6000 pre-install WinCE5.0 pro OS; MT6000-CAN pre-install WinCE5.0 core OS.			



Introduction:

MT5000 series HMI are designed for the high-end market. The powerful Marvell PXA270 RISC CPU and built-in Linux OS ensure the high performance of MT5000. Besides the impressive speed, MT5000 series feature field bus interfaces Profibus-DP/CANopen.

Features:

1. Support Profibus-DP/CANopen/MPI interfaces, support network configuration with MPI protocol;
2. USB Host/Client interface and SD card slot for mass data storage;
3. Optional video input and audio output for multimedia applications;
4. Ethernet interface and optional OPC server software available;
5. Data exchange between any two communication ports.



Technical Specification

Model	MT5320C	MT5323T	MT5423T	MT5520T	MT5620T	MT5720T
	MT5320C-CAN/DP/MPI	MT5323T-CAN/DP/MPI	MT5423T-CAN/DP/MPI	MT5520T-CAN/DP/MPI	MT5620T-CAN/DP/MPI	MT5720T-CAN/DP/MPI
Size of Display	5.6"	5.7"	8"	10.4"	12.1"	15"
Resolution	320 × 234	640 × 480	800 × 600	640 × 480	800 × 600	1024 × 768
Backlight	LED	LED	LED	2CCFL	2CCFL	2CCFL
Operation Temp.	0~45℃	-20~70℃	0~45℃	0~45℃	-10~65℃	0~50℃
Cutout Size	192 × 138mm	192 × 138mm	224 × 161mm	298 × 218mm	327 × 241mm	387.5 × 294.5mm
Notes	CANopen 2.0 protocol supported; Profibus-DP client node; MPI multi-nodes network supported.				Aluminium alloy front panel; CANopen 2.0 protocol supported; Profibus-DP client node; MPI multi-nodes network supported.	

HMI

HMI

MT4000 series
HMI with best value

MT4000 series HMI feature 32-bit RISC CPU and reliable Linux OS



Introduction:

MT4000 series HMI feature 32-bit RISC CPU and reliable Linux OS. True color display, fast speed and abundant software functions make MT4000 suitable for most industrial automation applications. MT4000 support over 200 different PLCs from major suppliers, customized communication drivers are available. MT4000 is your choice for data acquire and machine control. MT4000 series have the functions of direct online simulation, indirect online simulation and have high capacity memory to store user program, also support the standard C language macro. It can complete the

applications of data connection, calculation, controlling and so on quickly and effectively.

Features:

1. Vivid display with 65536 colors, support import of BMP, JPG and GIF pictures;
2. 32-bit RISC CPU ensures fast response;
3. Full line from 4.3" up to 12.1";
4. MT4000E series support 10M/100M self-adaptive ethernet port;
5. Strong Kinco HMIware functions, supports C language macro code.



Technical Specification

Model	MT4210T MT4220TE	MT4310C MT4300C(E)	MT4404T(E) MT4424TE	MT4414T(E) MT4414TE-CAN	MT4403T(E)	MT4512T(E) MT4522T(E)	MT4513T(E) MT4523T(E)	MT4620TE
Size of Display	4.3"(16:9)	5.6"	7" (16:9)	7" (16:9)	8"	10.1"(16:9)	10.4"	12.1"
Resolution	480 × 272	320 × 234	800 × 480	800 × 480	800 × 600	800 × 480	800 × 600	800 × 600
Backlight	LED	LED	LED	LED	LED	LED	LED	LED
Operation Temp.	-20~55℃	0~45℃	0~45℃	0~45℃	-10~45℃	0~45℃	0~45℃	-10~55℃
Cutout Size(mm)	145 × 81	192 × 138	194 × 113	192 × 138	224 × 161	298 × 218	298 × 218	340 × 250

MD series text display

Choice for simple applications



Introduction:

MD series programmable text HMI are designed for simple applications where low cost is a critical requirement. MD series support major PLCs. The operator can monitor and modify the real-time value and status of PLC registers via text and graphic symbols.

Features:

1. 4.3" STN LCD;
2. Support real time clock.

Technical Specification

Model	MD204L	MD214L	MD224L	MD304L
Size of display	4.3"	4.3"	4.3"	4.3"
Resolution	192 × 64	192 × 64	192 × 64	192 × 64
Function Keys	20	19	20	19
Backlight	Yellow-green LED	White LED	Yellow-green LED	White LED
Operation Temp.	0~50℃	0~50℃	0~50℃	0~50℃
Cutout size	165 × 86mm	165 × 78mm	165 × 86mm	165 × 78mm

Awards Winning By HMI

No.1 of "Most popular HMI brands"
--China Control Net, 2005

The Best HMI product 2005
Innovation award for Chinese vendors 2007,
2008 and 2011
--Control Engineering Magazine(America)



The Best HMI product 2005



Innovation award for Chinese vendors 2007, 2008 and 2011



ED Servo

ED Servo

ED Servo System

Combining Chinese and German intelligence
Inheriting the German gene of quality and reliability



Introduction:

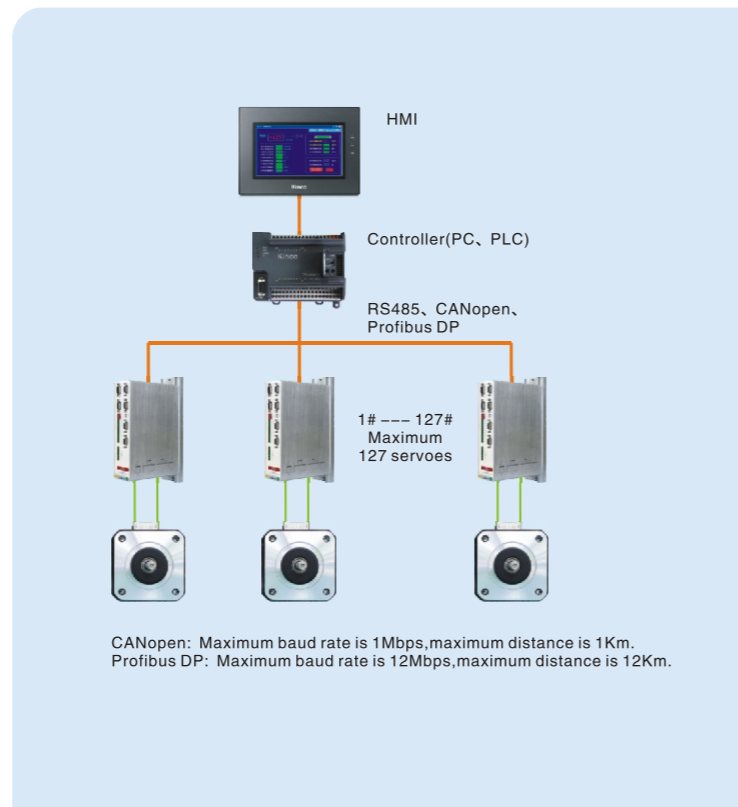
Kinco ED series servo driver is a completely-digitalized servo system supporting control over velocity, position and torque. Functions like drive, control, field bus communication and I/O control are integrated into the driver. ED drivers are capable of storing up to 256 program segments in the internal memory, each segment can have up to 8 sequence commands. In this way, the driver can store 256 different motion curves containing parameters like acceleration, deceleration, maximum speed, target position and etc. in its memory. All program segments can be executed through the 8 digit input channels on ED. Except for the internal programming function, ED drivers can be controlled through versatile communication methods including RS232, RS485, CANopen, Profibus-DP and user-defined protocols. Multiple ED drivers can be networked together for applications where data exchange among axis is required. ED drivers can be connected to Kinco HMI products via RS232/RS485 connections. Configurations of CANopen or Profibus-DP network are easy with the EDS and GSD files provided.

Basic Functions:

- Completely-digitalized control over speed, position and torque;
- Fault alarm for events of short circuit, overvoltage/under voltage, over heat, encoder failure, following error and I^t error;
- Providing communication options RS-232, RS-485 or CANopen, Profibus DP;
- Internal parameters like velocity, torque, position and current can be controlled by external analogue inputs;
- Intelligent brake control;
- Up to 27 homing modes;
- Enable or reset driver by external signal;

Features:

- Support master-slave control;
- Support up to 256 internal motion curve;
- 8 Digital inputs for executing internal sequences;
- 2 Digital outputs, used for signal feedback such as position reached, fault alarm etc.;
- Compatible with traditional control modes, such as Pulse/Direction, CW/CCW, analog control.



ED Servo Drivers and Motors Selection Table

Category	Power	Driver	Motor	Motor Description	Power cable	Encoder cable	Power cable connector kit	Encoder cable connector kit
Small Inertia 220V	200W	ED430-0020-LA-K-000	SMH60S-0020-30AAK-3LKL	3000rpm, 0.64Nm Cable connector, with keyway				
		ED430-0020-AA-K-000						
		ED430-0020-PA-K-000						
	400W	ED430-0040-LA-K-000	SMH60S-0040-30AAK-3LKL	3000rpm, 1.27Nm Cable connector, with keyway	MOTE-005 -□□-KL	ENCE- □□-KL	MOT-KL	ENCE-KL
		ED430-0040-AA-K-000						
		ED430-0040-PA-K-000						
750W	ED430-0075-LA-K-000	SMH80S-0075-30AAK-3LKL	3000rpm, 2.39Nm Cable connector, with keyway					
	ED430-0075-AA-K-000							
	ED430-0075-PA-K-000							
1000W	ED430-0100-LA-K-000	SMH80S-0100-30AAK-3LKL	3000rpm, 3.18Nm Cable connector, with keyway	MOTE-008 -□□-KL		MOT-KL-1		
	ED430-0100-AA-K-000							
	ED430-0100-PA-K-000							
Medium Inertia 220V	1.05KW	ED430-0105-LA-K-000	SMH110D-0105-20AAK-4LKC	2000rpm, 5Nm Standard connector, with keyway				
		ED430-0105-AA-K-000						
		ED430-0105-PA-K-000						
	1.26KW	ED430-0126-LA-K-000	SMH110D-0126-20AAK-4LKC	2000rpm, 6Nm Standard connector, with keyway	MOTE-008 -□□-KC1	ENCE- □□-KC1	MOT-KC1	ENCE-KC1
		ED430-0126-AA-K-000						
		ED430-0126-PA-K-000						
	1.25KW	ED430-0125-LA-K-000	SMH110D-0125-30AAK-4LKC	3000rpm, 4Nm Standard connector, with keyway				
		ED430-0125-AA-K-000						
		ED430-0125-PA-K-000						
	1.05KW	ED430-0105-LA-S-000	130D-0105-20AAK-2LS	2000rpm, 5Nm Standard connector, with keyway	MOTE4-150 -□□-S	ENCE4-150 -□□-S	MOTE4-S	ENCE4-S
		ED430-0105-AA-S-000						
		ED430-0105-PA-S-000						
1.57KW	ED430-0157-LA-S-000	130D-0157-20AAK-2LS	2000rpm, 7.5Nm Standard connector, with keyway					
	ED430-0157-AA-S-000							
	ED430-0157-PA-S-000							
Medium Inertia 380V	1.26KW	ED620-0126-LA-K-000	SMH110D-0126-30AAK-4HKC	3000rpm, 4Nm Standard connector, with keyway	MOTE-008 -□□-KC1	ENCE- □□-KC1	MOT-KC1	ENCE-KC1
		ED620-0126-AA-K-000						
		ED620-0126-PA-K-000						
	1.57KW	ED620-0157-LA-K-000	SMH110D-0157-30AAK-4HKC	3000rpm, 5Nm Standard connector, with keyway				
		ED620-0157-AA-K-000						
		ED620-0157-PA-K-000						
1.88KW	ED620-0188-LA-K-000	SMH110D-0188-30AAK-4HKC	3000rpm, 6Nm Standard connector, with keyway					
	ED620-0188-AA-K-000							
	ED620-0188-PA-K-000							
Medium Inertia 380V	1.80KW	ED620-0180-LA-G-000	126D-0180-20AAK-3HG	2000rpm, 8.8Nm Standard connector, with keyway	MOTE6-180 -□□-G	ENCE6-180 -□□-G	MOTE6-G1	ENCE6-G1
		ED620-0180-AA-G-000						
		ED620-0180-PA-G-000						
	2.50KW	ED630-0250-LA-G-000	155D-0250-20AAK-3HG	2000rpm, 12Nm Standard connector, with keyway	MOTE6-300 -□□-G	ENCE6-300 -□□-G	MOTE6-G2	ENCE6-G2
		ED630-0250-AA-G-000						
		ED630-0250-PA-G-000						
	3.0KW	ED630-0300-LA-G-000	155D-0300-20AAK-3HG	2000rpm, 14.3Nm Standard connector, with keyway				
		ED630-0300-AA-G-000						
		ED630-0300-PA-G-000						
	4.0KW	ED630-0400-LA-G-000	155D-0400-20AAK-3HG	2000rpm, 19.3Nm Standard connector, with keyway				
		ED630-0400-AA-G-000						
		ED630-0400-PA-G-000						

Example: 1. You want to use a 4KW servo driver with RS232/485 port and a motor with keyway, the distance between the driver and motor is 10m. You decide to order the 10m-long cables. Order the following items:

Driver model: ED630-0400-LA-G-000
Motor model: 155D-0400-20AAK-3HG
Power cable model: MOTE6-300-10-G
Encoder cable model: ENCE6-300-10-G

2. You want to use a 4KW servo driver with RS232/485 port and a motor with keyway. You decide to make the cables with the connector kits rather than the standardized cables. Order the following items:

Driver model: ED630-0400-LA-G-000
Motor model: 155D-0400-20AAK-3HG
Power cable connector kit: MOTE6-G2
Encoder cable connector kit: ENCE6-G2

Notes: □□= 03 Length of cable is 3m
□□= 05 Length of cable is 5m
□□= 10 Length of cable is 10m
□□= 15 Length of cable is 15m

ED Servo

ED Servo

ED series 3-phase servo driver



• ED430 series



• ED620/ED630 series

3-Phase Servo Motor



• Small inertia series

- 60S
- 80S



• Medium inertia series

- 110D
- 126D
- 130D
- 155D

ED Servo Drivers and Motors Selection Guide

Motor model	SMH60S-0020 -30AAK-3LK□	SMH60S-0040 -30AAK-3LK□	SMH80S-0075 -30AAK-3LK□	SMH80S-0100 -30AAK-3LK□	SMH110D-0105 -20AAK-4LK□	SMH110D-0126 -20AAK-4LK□	SMH110D-0125 -30AAK-4LK□	130D-0105 -20AAK-2LS	130D-0157 -20AAK-2LS	SMH110D-0126 -30AAK-4HK□	SMH110D-0157 -30AAK-4HK□	SMH110D-0188 -30AAK-4HK□	126D-0180 -20AAK-3HG	155D-0250 -20AAK-3HG	155D-0300 -20AAK-3HG	155D-0400 -20AAK-3HG
Matching driver model	ED430-0020 -□A-K	ED430-0040 -□A-K	ED430-0075 -□A-K	ED430-0100 -□A-K	ED430-0105 -□A-K	ED430-0126 -□A-K	ED430-0125 -□A-K	ED430-0105 -□A-S	ED430-0157 -□A-S	ED620-0126 -□A-K	ED620-0157 -□A-K	ED620-0188 -□A-K	ED620-0180 -□A-G	ED630-0250 -□A-G	ED630-0300 -□A-G	ED630-0400 -□A-G
Power supply VAC	220V	220V	220V	220V	220V	3-phase 220V	3-phase 220V	220V	3-phase 220V	3-phase 380V	3-phase 380V	3-phase 380V	3-phase 380V	3-phase 380V	3-phase 380V	3-phase 380V
Rated power	200W	400W	750W	1KW	1.05KW	1.26KW	1.26KW	1.05KW	1.57KW	1.26KW	1.57KW	1.88KW	1.80KW	2.50KW	3.00KW	4.00KW
Rated torque (N·m)	0.64	1.27	2.39	3.18	5	6	4	5	7.5	4	5	6	8.8	12	14.3	19
Maximum torque (N·m)	1.92	3.82	7.17	9.48	15	18	12	16.6	24.8	12	15	18	26.4	36	35.75	47
Rated speed (rpm)	3000	3000	3000	3000	2000	2000	3000	2000	2000	3000	3000	3000	2000	2000	2000	2000
Maximum speed (rpm)	6000	6000	5500	5500	2850	2850	5000	3000	3000	5000	5000	5000	3000	3000	3000	3000
Motor inertia (kg·cm ²)	0.375	0.51	1.36	1.9	7.2	8.5	5.8	7.4	9.6	5.8	7.2	8.5	17	26.7	35.7	47.5
Transformer capacity (KVA)	0.5	1	1.3	1.8	1.8	2.1	2.1	1.8	2.4	2.1	2.4	3.2	3.2	3.8	4.5	5.4
Encoder	Incremental encoder: 2500PPR(Resolution:10000)															
Rated current (A)	1.63	3.08	4	6.3	5.9	6.15	6.5	4.2	6	4.3	5.9	6.15	5.6	6.8	10	13
Maximum current (A)	4.89	9.24	12	18.9	17.7	18.45	18.6	13.9	22.6	12.9	17.7	18.45	16.8	20.4	30	39
Torque constant (Nm/A)	0.48	0.48	0.562	0.562	0.910	1.058	0.744	1.37	1.4	1.058	0.910	1.058	1.96	1.76	1.43	1.46
Resistance line-line (Ω)	8.02	3.52	1.15	0.86	1.03	1.258	0.8	3.2	2.12	1.83	1.03	1.258	0.87	0.95	0.91	0.88
Inductance line-line (mH)	16.3	7.8	5.8	4.5	7.8	9.62	6.4	17.8	11.53	13.5	7.8	9.62	10.3	10.8	11.2	11.5
Electrical time constant (ms)	2.03	2.22	5.04	5.23	7.57	7.64	7.9	5.56	5.43	7.37	7.57	7.64	11.8	11.4	12.3	13.1
Machanical time constant(ms)	2.26	1.35	0.86	0.89	1.55	1.65	1.4	5.73	7.25	1.63	1.55	1.65	1.45	1.43	1.57	1.68
Maximum radial force F(N)	180	180	335	335	630	630	630	680	680	630	630	630	680	1320	1320	1320
Maximum axial force F(N)	90	90	167.5	167.5	315	315	315	130	130	315	315	315	350	650	650	650
Pole pair number	3	3	3	3	4	4	4	2	2	4	4	4	3	3	3	3
Insulation class	F															
Protection level	IP65 for body, IP54 for shaft sealing															
Environmental conditions	Temperature	-20°C ~ 40°C (non-freezing)														
	Humidity	Below 90% RH (non-condensing)														
	Ambient environment	Away from active gas,combustible gas,oil drops and dust														
	Altitude	Maximum altitude 4000m. Rated power at 1000m. Above 1000m,decreasing 1.5% power per 100m rise														
Motor weight(Kg)	1.3	1.8	3.3	3.9	7.2	8.2	6.2	7.6	9.5	6.2	7.2	8.2	15.3	17.9	20.9	22.5

Notes: □=H: Direct cable connector
 □=N: HFO series standard connector
 □=C: YL series standard connector
 □=M: 2*M17 series Intercontec connector
 □=D: M17+M23(Power M23 Intercontec connector, Encoder M17 Intercontec connector)

□=L: With RS232, RS485
 □=A: With RS232, RS485, CANopen
 □=P: With RS232, Profibus-DP

JD Servo

JD Servo

JD Servo system

Kinco JD series CAN bus servo system

New servo system with multiple functions, safe, reliable and high performance



JD Series CAN Servo Driver

Product model: JD430/JD620, Product power 200W~5.5KW

Main features:

Safe and reliable

- The STO(Safe Torque Off) design in hardware satisfies the safe standard.
- Product design satisfies UL standard.
- New circuit design makes JD has strong anti- interference ability.
- The isolation protection on communication port makes the communication stable and reliable.

Multiple functions:

- Supports standard Modbus and CANopen protocol.
- Independent master-slave hardware port ensures the high accuracy master-slave tracking performance.
- Customized firmware according to the customer's special application.

High performance:

- The response frequency in speed loop is 660Hz, and supports high resolution communication encoder.
- Three times overload ability.

Servo Drivers and Motors Selection Guide

Category	Servo Driver	Servo Motor	Description	Power/Brake Cable	Encoder Cable	Rated Speed/ Rated Torque/ Rated Current	
Small Inertia 220V	JD430-AA-000	SMH60S-0020-30AAK-3LKH	Cable connector	MOT-005-LL-KL	ENCCA-LL-KH	3000rpm/ 0.64Nm/ 1.6A	
		SMH60S-0020-30ABK-3LKH	Cable connector and brake	MOT-005-LL-KL/BRA-LL-KL			
		SMH60S-0020-30AAK-3LKN	HFO standard connector	MOT-005-LL-KC0	ENCCA-LL-KC0		
		SMH60S-0020-30AAK-3LKM	Intercontec connector	MOT-005-LL-KM1			
		SMH60S-0020-30ABK-3LKM	Intercontec connector with brake	MOT-005-LL-KM1-B	ENCCA-LL-KM1		
		SMH60S-0040-30AAK-3LKH	Cable connector	MOT-005-LL-KL			
		SMH60S-0040-30ABK-3LKH	Cable connector and brake	MOT-005-LL-KL/BRA-LL-KL	ENCCA-LL-KH	3000rpm/ 1.27Nm/ 3.1A	
		SMH60S-0040-30AAK-3LKN	HFO standard connector	MOT-005-LL-KC0			
		SMH60S-0040-30AAK-3LKM	Intercontec connector	MOT-005-LL-KM1	ENCCA-LL-KC0		
		SMH60S-0040-30ABK-3LKM	Intercontec connector with brake	MOT-005-LL-KM1-B			
		SMH80S-0075-30AAK-3LKH	Cable connector	MOT-005-LL-KL	ENCCA-LL-KH		3000rpm/ 2.39Nm/ 3.9A
		SMH80S-0075-30ABK-3LKH	Cable connector and brake	MOT-005-LL-KL/BRA-LL-KL			
	SMH80S-0075-30AAK-3LKN	HFO standard connector	MOT-005-LL-KC0	ENCCA-LL-KC0			
	SMH80S-0075-30AAK-3LKM	Intercontec connector	MOT-005-LL-KM1				
	SMH80S-0075-30ABK-3LKM	Intercontec connector with brake	MOT-005-LL-KM1-B	ENCCA-LL-KM1			
	SMH80S-0100-30AAK-3LKH	Cable connector	MOT-008-LL-KL		ENCCA-LL-KH	3000rpm/ 3.18Nm/ 6.3A	
	SMH80S-0100-30ABK-3LKH	Cable connector and brake	MOT-008-LL-KL/BRA-LL-KL				
	SMH80S-0100-30AAK-3LKN	HFO standard connector	MOT-008-LL-KC0	ENCCA-LL-KC0			
	SMH80S-0100-30AAK-3LKM	Intercontec connector	MOT-008-LL-KM1				
	SMH80S-0100-30ABK-3LKM	Intercontec connector with brake	MOT-008-LL-KM1-B	ENCCA-LL-KM1			
	SMH110D-0105-20AAK-4LKC	YL22 standard connector	MOT-008-LL-KC1		ENCCA-LL-KC1		2000rpm/ 5Nm/ 5.9A
	SMH110D-0105-20ABK-4LKC	YL24 standard connector with brake	MOT-008-LL-KC2-B				
	SMH110D-0105-20AAK-4LKD	Intercontec connector	MOT-008-LL-KM2	ENCCA-LL-KM1			
	SMH110D-0105-20ABK-4LKD	Intercontec connector with brake	MOT-008-LL-KM2-B				
SMH110D-0126-20AAK-4LKC	YL22 standard connector	MOT-008-LL-KC1	ENCCA-LL-KC1	2000rpm/ 6Nm/ 6.2A			
SMH110D-0126-20ABK-4LKC	YL24 standard connector with brake	MOT-008-LL-KC2-B					
SMH110D-0126-20AAK-4LKD	Intercontec connector	MOT-008-LL-KM2	ENCCA-LL-KM1				
SMH110D-0126-20ABK-4LKD	Intercontec connector with brake	MOT-008-LL-KM2-B					
SMH110D-0125-30AAK-4LKC	YL22 standard connector	MOT-008-LL-KC1	ENCCA-LL-KC1		3000rpm/ 4Nm/ 6.5A		
SMH110D-0125-30ABK-4LKC	YL24 standard connector with brake	MOT-008-LL-KC2-B					
SMH110D-0125-30AAK-4LKD	Intercontec connector	MOT-008-LL-KM2	ENCCA-LL-KM1				
SMH110D-0125-30ABK-4LKD	Intercontec connector with brake	MOT-008-LL-KM2-B					
SMH110D-0126-30AAK-4HKC	YL22 standard connector	MOT-008-LL-KC1	ENCCA-LL-KC1	3000rpm/ 4Nm/ 4.3A			
SMH110D-0126-30ABK-4HKC	YL24 standard connector with brake	MOT-008-LL-KC2-B					
SMH110D-0126-30AAK-4HKD	Intercontec connector	MOT-008-LL-KM2	ENCCA-LL-KM1				
SMH110D-0126-30ABK-4HKD	Intercontec connector with brake	MOT-008-LL-KM2-B					
SMH110D-0157-30AAK-4HKC	YL22 standard connector	MOT-008-LL-KC1	ENCCA-LL-KC1		3000rpm/ 5Nm/ 5.9A		
SMH110D-0157-30ABK-4HKC	YL24 standard connector with brake	MOT-008-LL-KC2-B					
SMH110D-0157-30AAK-4HKD	Intercontec connector	MOT-008-LL-KM2	ENCCA-LL-KM1				
SMH110D-0157-30ABK-4HKD	Intercontec connector with brake	MOT-008-LL-KM2-B					
SMH110D-0188-30AAK-4HKC	YL22 standard connector	MOT-008-LL-KC1	ENCCA-LL-KC1	3000rpm/ 6Nm/ 6.2A			
SMH110D-0188-30ABK-4HKC	YL24 standard connector with brake	MOT-008-LL-KC2-B					
SMH110D-0188-30AAK-4HKD	Intercontec connector	MOT-008-LL-KM2	ENCCA-LL-KM1				
SMH110D-0188-30ABK-4HKD	Intercontec connector with brake	MOT-008-LL-KM2-B					

CD Servo

CD Servo

CD Servo System

- CD Series servo driver
- SMH Series servo motor



CD Series Servo Driver

Model CD420/430/620(380VAC), power range from 200W to 2KW.

Main features:

- With many protective measures against events like overvoltage, over current, overheat and etc.;
- Easy configuration with built-in operation panel or complimentary PC software;
- Simple wiring, welding free;
- High response frequency, the bandwidth of speed loop can be up to 600Hz;
- Support multiple control modes like pulse and analog;
- support automatic gain tuning, suitable for most application.

SMH Series Servo Motor

Product Model :SMH60/80/110, power range from 200W to 2KW; SME60/80, power ranges from 200W to 750W.

Main features:

- With 3 times overload capacity;
- With IP65 protection level;
- Low torque ripple;
- Excellent dynamic response;
- Elegant exterior design.



Servo Drivers and Motors Selection Guide

Category	Servo Driver	Servo Motor	Description	Power/brake Cable	Encoder Cable	Rated Speed/ Rated Torque/ Rated Current		
Small Inertia 220V	CD420-AA-000	SMH60S-0020-30AAK-3LKH	Cable connector	MOT-005-LL-KL	ENCCA-LL-KH	3000rpm/ 0.64Nm/ 1.6A		
		SMH60S-0020-30ABK-3LKH	Cable connector and brake	MOT-005-LL-KL/BRA-LL-KL	ENCCA-LL-KC0			
		SMH60S-0020-30AAK-3LKN	HFO standard connector	MOT-005-LL-KC0	ENCCA-LL-KM1			
		SMH60S-0020-30AAK-3LKM	Intercontec connector	MOT-005-LL-KM1	ENCCA-LL-KM1	3000rpm/ 1.27Nm/ 3.1A		
		SMH60S-0020-30ABK-3LKM	Intercontec connector with brake	MOT-005-LL-KM1-B	ENCCA-LL-KH			
		SMH60S-0040-30AAK-3LKH	Cable connector	MOT-005-LL-KL	ENCCA-LL-KC0			
		SMH60S-0040-30ABK-3LKH	Cable connector and brake	MOT-005-LL-KL/BRA-LL-KL	ENCCA-LL-KC0	3000rpm/ 1.27Nm/ 3.1A		
		SMH60S-0040-30AAK-3LKN	HFO standard connector	MOT-005-LL-KC0	ENCCA-LL-KM1			
		SMH60S-0040-30AAK-3LKM	Intercontec connector	MOT-005-LL-KM1	ENCCA-LL-KM1			
		SMH60S-0040-30ABK-3LKM	Intercontec connector with brake	MOT-005-LL-KM1-B	ENCCA-LL-KH	3000rpm/ 2.39Nm/ 3.9A		
		SMH80S-0075-30AAK-3LKH	Cable connector	MOT-005-LL-KL	ENCCA-LL-KC0			
		SMH80S-0075-30ABK-3LKH	Cable connector and brake	MOT-005-LL-KL/BRA-LL-KL	ENCCA-LL-KM1			
		SMH80S-0075-30AAK-3LKN	HFO standard connector	MOT-005-LL-KC0	ENCCA-LL-KH	3000rpm/ 0.64Nm/ 1.6A		
		SMH80S-0075-30AAK-3LKM	Intercontec connector	MOT-005-LL-KM1	ENCCF-LL-FH			
		SMH80S-0075-30ABK-3LKM	Intercontec connector with brake	MOT-005-LL-KM1-B	ENCCF-LL-FH			
		SMH80S-0075-30ABK-3LKH	Intercontec connector	MOT-005-LL-KL	ENCCF-LL-FH	3000rpm/ 1.27Nm/ 3.1A		
		SME60S-0020-30AAK-3LKH	Cable connector	MOT-005-LL-KL	ENCCF-LL-FH			
		SME60S-0020-30ABK-3LKH	Cable connector and brake	MOT-005-LL-KL/BRA-LL-KL	ENCCF-LL-FH			
		SME60S-0040-30AAK-3LKH	Cable connector	MOT-005-LL-KL	ENCCF-LL-FH	3000rpm/ 2.39Nm/ 3.9A		
		SME60S-0040-30ABK-3LKH	Cable connector and brake	MOT-005-LL-KL/BRA-LL-KL	ENCCF-LL-FH			
SME80S-0075-30AAK-3LKH	Cable connector	MOT-005-LL-KL	ENCCF-LL-FH					
SME80S-0075-30ABK-3LKH	Cable connector and brake	MOT-005-LL-KL/BRA-LL-KL	ENCCF-LL-FH					
Medium Inertia 220V	CD430-AA-000	SMH80S-0100-30AAK-3LKH	Cable connector	MOT-008-LL-KL	ENCCA-LL-KH	3000rpm/ 3.18Nm/ 6.3A		
		SMH80S-0100-30ABK-3LKH	Cable connector and brake	MOT-008-LL-KL/BRA-LL-KL	ENCCA-LL-KC0			
		SMH80S-0100-30AAK-3LKN	HFO standard connector	MOT-008-LL-KC0	ENCCA-LL-KM1			
		SMH80S-0100-30AAK-3LKM	Intercontec connector	MOT-008-LL-KM1	ENCCA-LL-KM1	2000rpm/ 5Nm/ 5.9A		
		SMH80S-0100-30ABK-3LKM	Intercontec connector with brake	MOT-008-LL-KM1-B	ENCCA-LL-KC1			
		SMH110D-0105-20AAK-4LKC	YL22 standard connector	MOT-008-LL-KC1	ENCCA-LL-KM1			
		SMH110D-0105-20ABK-4LKC	YL24 standard connector and brake	MOT-008-LL-KC2-B	ENCCA-LL-KC1	2000rpm/ 6Nm/ 6.2A		
		SMH110D-0105-20AAK-4LKD	Intercontec connector	MOT-008-LL-KM2	ENCCA-LL-KC1			
		SMH110D-0105-20ABK-4LKD	Intercontec connector with brake	MOT-008-LL-KM2-B	ENCCA-LL-KC1			
		SMH110D-0126-20AAK-4LKC	YL22 standard connector	MOT-008-LL-KC1	ENCCA-LL-KC1	3000rpm/ 4Nm/ 4.3A		
		SMH110D-0126-20ABK-4LKC	YL24 standard connector and brake	MOT-008-LL-KC2-B	ENCCA-LL-KC1			
		SMH110D-0126-20AAK-4LKD	Intercontec connector	MOT-008-LL-KM2	ENCCA-LL-KM1			
		SMH110D-0126-20ABK-4LKD	Intercontec connector with brake	MOT-008-LL-KM2-B	ENCCA-LL-KC1	3000rpm/ 5Nm/ 5.9A		
		SMH110D-0125-30AAK-4LKC	YL22 standard connector	MOT-008-LL-KC1	ENCCA-LL-KC1			
		SMH110D-0125-30ABK-4LKC	YL24 standard connector and brake	MOT-008-LL-KC2-B	ENCCA-LL-KC1			
		SMH110D-0125-30AAK-4LKD	Intercontec connector	MOT-008-LL-KM2	ENCCA-LL-KM1	3000rpm/ 5Nm/ 5.9A		
		SMH110D-0125-30ABK-4LKD	Intercontec connector with brake	MOT-008-LL-KM2-B	ENCCA-LL-KC1			
		SMH110D-0125-30ABK-4LKD	Intercontec connector with brake	MOT-008-LL-KM2-B	ENCCA-LL-KM1			
		Medium Inertia 380V	CD620-AA-000	SMH110D-0126-30AAK-4HKC	YL22 standard connector	MOT-008-LL-KC1	ENCCA-LL-KC1	3000rpm/ 4Nm/ 4.3A
				SMH110D-0126-30ABK-4HKC	YL24 standard connector and brake	MOT-008-LL-KC2-B	ENCCA-LL-KC1	
SMH110D-0126-30AAK-4HKD	Intercontec connector			MOT-008-LL-KM2	ENCCA-LL-KM1			
SMH110D-0126-30ABK-4HKD	Intercontec connector with brake			MOT-008-LL-KM2-B	ENCCA-LL-KC1	3000rpm/ 5Nm/ 5.9A		
SMH110D-0157-30AAK-4HKC	YL22 standard connector			MOT-008-LL-KC1	ENCCA-LL-KC1			
SMH110D-0157-30ABK-4HKC	YL24 standard connector and brake			MOT-008-LL-KC2-B	ENCCA-LL-KC1			
SMH110D-0157-30AAK-4HKD	Intercontec connector			MOT-008-LL-KM2	ENCCA-LL-KM1	3000rpm/ 6Nm/ 6.2A		
SMH110D-0157-30ABK-4HKD	Intercontec connector with brake			MOT-008-LL-KM2-B	ENCCA-LL-KC1			
SMH110D-0188-30AAK-4HKC	YL22 standard connector			MOT-008-LL-KC1	ENCCA-LL-KC1			
SMH110D-0188-30ABK-4HKC	YL24 standard connector and brake			MOT-008-LL-KC2-B	ENCCA-LL-KC1	3000rpm/ 6Nm/ 6.2A		
SMH110D-0188-30AAK-4HKD	Intercontec connector			MOT-008-LL-KM2	ENCCA-LL-KM1			
SMH110D-0188-30ABK-4HKD	Intercontec connector with brake			MOT-008-LL-KM2-B	ENCCA-LL-KM1			

CD Servo

CD Servo

CD120 Servo System

It has the advantages of servo and stepper driver, large torque and high response speed make it suitable for the some special applications.



CD120 Series Servo Driver

Product model **CD120-AA-000**

Product Model

Driver	CD120-AA-000				
Motor	Multiple Pole Pairs Servo	57S	1Nm/1.5Nm	800rpm	
	Less Pole Pairs Servo	SME60S	200W	3000rpm	

Main Characteristics:

Servo Driver

- Safe and reliable: Multiple protections like over voltage, over current and overheat protection.
- High response frequency: The width of speed loop is up to 600Hz.
- Multiple control modes and gain auto-tuning function.
- PC software debugging: Easy and convenient.

Motor

- Low temperature rise
- Excellent dynamic response performance
- Large torque output at low speed

Servo Drivers and Motors Selection Guide

Product Series	Servo Driver	Servo motor	Note	Power Cable	Encoder Cable	Rated Speed/ Rated Torque/ Rated Current
Small inertia DC60V	CD120-AA-000	57S-0008-08AAK-FDFH	Direct cable connector	MOT-005 -LL-KL-D	ENCCF -LL-FH	800rpm/ 1Nm/ 5.6A
		57S-0015-08AAK-FDFH				800rpm/ 1.5Nm/ 5.8A
		SME60S-0020-30AAK-3DKH				3000rpm/ 0.64Nm/ 4.8A

Servo Motor Parameters Table

Motor Series		Small Inertia Flange Size:60mm
Motor model		SME60S-0020-30AAK-3DKH
Compatible driver		CD120-AA-000
DC link voltage UDC		60
Continuous performance	Rated power Pn(W)	200
	Rated torque Tn(Nm)	0.64
	Rated speed Nm(rpm)	3000
	Rated current In(A)	4.8
Max. torque Tm(Nm)		1.92
Max. current Im(A)		13.8
Standstill torque Ts(Nm)		0.7
Standstill current Is(A)		5.06
Resistance(line-line) R _L (Ω)		0.7
Inductance(line-line) L _L (mH)		1.55
Electrical time constant τ _e (ms)		2.21
Mechanical time constant τ _m (ms)		2.05
Reverse voltage constant K _e (V/krpm)		9
Torque constant K _t (Nm/A)		0.149
Totot moment of inertia Jm(Kg·cm ²)		0.375
Pole pair		3
Maximum voltage rising du/dt (KV/μs)		8
Insulation class		F
Radial force F(N)		180
Axial force F(N)		90
Weight G(Kg)		1.3
Length of motor L(mm)		120 ± 1.5
Position feedback device		2500ppr photoelectric encoder(incremental)
Cooling method		Wholly enclosed, self cooling
Protection class		IP54 at shaft side
Operation environment	Temperature	-20 ~ 40℃
	Humidity	Below 90RH(non-condensing)
	Ambient enviroment	Away from corrosive /combustible gas. oil drops and dust
	Altitude	Max, altitude 4000m, Rated power at 1000m or below(Power decreases 1.5% per 100m when altitude rise)

F Series Motor		Small Inertia Flange Size:57mm
Motor model	57S-0008-08AAK-FDFH	57S-0015-08AAK-FDFH
Compatible driver	CD120-AA-000	CD120-AA-000
Phase current (A)	5.6	5.8
Rated torque (Nm)	1	1.5
Damping torque (Nm)	0.04	0.068
Phase resistance (Ω)	0.47	0.7
Phase inductance (mH)	1.7	2.4
Motor inertia (Kg.cm ²)	0.3	0.48
Length of motor L(mm)	90 ± 1.5	113 ± 1.5
Lead number	4	4
Insulation class	B	B
Withstand voltage class	600V AC 1S 5mA	600V AC 1S 5mA
Radial force (N)	15	15
Axial force (N)	75	75
Operation temperature	-20 ~ 50℃	-20 ~ 50℃
Surface temperature	Maximum 80℃	Maximum 80℃
Insulation impedance	Minmum 100MΩ, 500V DC	Minmum 100MΩ, 500V DC
Weight (Kg)	1.05	1.3

Stepper Driver



N Series High Performance Digital Stepper Drivers



N series digital stepper driver incorporate advanced stepper drive technology derived from servo driver technology platform and Kinco's experience in stepper market. N series drivers can work with any 2-phase hybrid stepper motor with flange size from 86 to 130 mm and rated current below 8.0 A.

Main features:

- Higher performance, multifunctional, better value;
- Utilize space vector technology derived from servo products, result in more precise current control, lower heat emission of motor and lower noise;
- Utilize motor resonance suppress technology, make motor running more smoothly;
- Improved thermal design result in lower temperature rise.

Model	Power supply	Maximum output phase current	Notes
2M880N	24~70VDC	8A	N series 2-phase subdivision
2M1180N	110VAC	8A	
2M2280N	220VAC	8A	
3M2280N	220VAC	8A	N series 3-phase micro step

Traditional Series Stepper Drivers



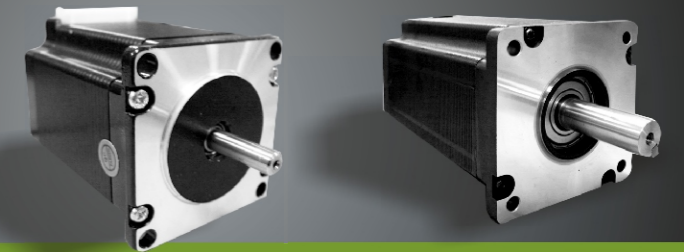
Kinco classic series stepper drivers have a long reputation of reliable quality and performance, suitable for most 2-phase hybrid motors with current below 6A and 3-phase hybrid motors with current below 5.8A.

Main features:

- Stable, reliable, easy to use;
- Automatic half current function;
- Use photoelectric coupling isolation in input circuit;
- Multiple protection measures.

Model	Power supply	Maximum output phase current	Notes
2M412	12~40VDC	1.2A	2-phase subdivision
2M420	24~40VDC	2.5A	2-phase subdivision
2M530	24~48VDC	3.5A	2-phase subdivision
2M860	24~70VDC	6A	2-phase subdivision
2H1160	110VAC	6.5A	2-phase full/half step
3M458	24~40VDC	5.8A	3-phase subdivision

Stepper Motor



Motor Parameters Table

● 2-phase series

● 3-phase series

Stepper Motor

Kinco 2-phase and 3-phase hybrid stepper motors are made of high quality CRS(Cold Rolled Steel) and thermostability permanent magnet. The flange size of 2-phase series ranges from 42mm to 130mm, the 3-phase series are of 57mm and 85mm. Kinco stepper motors feature low temperature rise, high reliability and stability, which make Kinco stepper motors suitable for different industries under different ambient conditions.

Motor Parameters Table					Stepper Drivers and Motors Selection Guide									
Type	Flange (mm)	Model	Phase current (A)	Holding torque (nm)	2M412	2M420	2M530	2M860	2H1160	2M880N	2M1180N	2M2280N	3M458	3M2280N
2-phase	42	2S42Q-02940	0.87	0.24	✓	✓								
		2S42Q-03848	1.2	0.32	✓	✓								
	56	2S56Q-02741	1.5	0.5		✓	✓							
		2S56Q-02054	3.0	0.9			✓	✓		✓				
		2S56Q-02976	3.0	1.5			✓	✓		✓				
		2S56Q-030B5	6.0	2.5				✓		✓	✓			
		2S86Q-01865	6.0	3.4				✓	✓	✓	✓			
	86	2S86Q-03080	6.0	4.5				✓	✓	✓	✓			
		2S86Q-030B8	6.0	8.5				✓	✓	✓	✓			
		2S86Q-051F6	6.0	12.8				✓	✓	✓	✓			
		2S86Q-03865	3.0	3.4			✓	✓	✓	✓	✓			
		2S86Q-05180	3.0	4.5			✓	✓	✓	✓	✓			
		2S86Q-069B8	3.0	8.5			✓	✓	✓	✓	✓			
		2S110Q-03999	5.5	11.7					✓			✓	✓	
110	2S110Q-047F0	6.5	21					✓			✓	✓		
	2S110Q-054K1	8.0	30					✓			✓	✓		
	2S130Y-039M0	6.0	27								✓	✓		
130	2S130Y-063R8	7.0	40								✓	✓		
3-phase	57	3S57Q-04042	5.2	0.45										✓
		3S57Q-04056	5.6	0.9										✓
		3S57Q-04079	5.8	1.5										✓
	85	3S85Q-04067	5.8	2										✓
		3S85Q-04097	5.8	4										✓

Note: Red means that the driver can drive the motor but not the recommended; the 3M2280N can drive other brand stepper motor.

4 Programable Controller

4 Programable Controller

Kinco PLC



CPU Module Expansion I/O Module



Kinco PLC

K3 PLC support IL (instruction list) and LD (ladder diagram) languages. The project architecture complies with the IEC61131-3 software model. 114 basic instructions and 420 expansion instructions are provided, suitable for most machine controls and some small-scale process controls.

Main features:

- Reliable, highly cost effective;
- Abundant expansion modules satisfy different applications;
- Support high speed counter, pulse input and PID algorithm;
- Multiple communication protocols supported;
- Multiple encryption methods.

Kinco F1 series CAN bus PLC



F122-D1608T is a Kinco launched PLC product that is for bus control, it integrates a 3S company's software called Codesys in it which has a strong

function and steady performance, it has the strong high speed logic control ability and apply the standard CANopen protocol. It can connect to other Kinco products to provide customer low cost system solution.

Kinco K3 series PLC module table

Type	Module Name	Model	Features description
CPU module	CPU304	Kinco-K304-14AT	AC85-265V power supply, provided with 14 I/O, DI8 × DC24V, DO6 × DC24V, a maximum output current of 0.75A for each channel, without expansion functions.
		Kinco-K304-14AR	AC85-265V power supply, provided with 14 I/O, DI8 × DC24V, DO6 × relay, a maximum output current of 3A for each channel, without expansion functions.
		Kinco-K304-14AX	AC85-265V power supply, provided with 14 I/O, DI8 × DC24V, DO3 × DC24V transistor/3relay, a maximum output current of 0.75A for each channel/3A, without expansion functions.
	CPU304EX	Kinco-K304EX-14AR	AC85-265V power supply, provided with 14 I/O, DI8 × DC24V, DO6 × relay, a maximum output current of 3A for each channel, with expansion functions.
		Kinco-K306-24DT	DC24V power supply, provided with 24 I/O, DI14 × DC24V, DO10 × DC24V, a maximum output current of 0.75A for each channel
	CPU306	Kinco-K306-24DR	DC24V power supply, provided with 24 I/O, DI14 × DC24V, DO10 × relay, a maximum output current of 3A for each channel
		Kinco-K306-24AT	AC85-265V power supply, provided with 24 I/O, DI14 × DC24V, DO10 × DC24V, a maximum output current of 0.75A for each channel
		Kinco-K306-24AR	AC85-265V power supply, provided with 24 I/O, DI14 × DC24V, DO10 × relay, a maximum output current of 3A for each channel
	CPU306EX	Kinco-K306EX-24AT	AC85-265V power supply, provided with 24 I/O, DI14 × DC24V, DO10 × DC24V, a maximum output current of 0.75A for each channel, dual serial ports, Port0 RS232/485(Optional), Port1 RS485 Isolation
		Kinco-K306EX-24AR	AC85-265V power supply, provided with 24 I/O, DI14 × DC24V, DO10 × relay, a maximum output current of 3A for each channel, dual serial ports, Port0 RS232/485(Optional), Port1 RS485 Isolation
	CPU308	Kinco-K308-40AR	AC85-265V power supply, provided with 40 I/O, DI24 × DC24V, DO16 × relay, a maximum output current of 3A for each channel, dual serial ports, Port0 RS232/485(Optional), Port1 RS485 Isolation
		Kinco-K308-40AT	AC85-265V power supply, provided with 40 I/O, DI24 × DC24V, DO16 × DC24V, a maximum output current of 0.75A for each channel, dual serial ports, Port0 RS232/485(Optional), Port1 RS485 Isolation
Kinco-K308-40AX		AC85-265V power supply, provided with 40 I/O, DI24 × DC24V, DO4 × DC24V/12 × relay, a maximum output current of 3A for each channel, dual serial ports, Port0 RS232/485(Optional), Port1 RS485 Isolation	
Kinco-K321-08DX		DI 8 × DC24V	
Expansion I/O module	PM321	Kinco-K321-16DX	DI 16 × DC24V
		Kinco-K322-08DT	DO 8 × DC24V, a maximum output current of 0.75A for each channel
	PM322	Kinco-K322-16DT	DO 16 × DC24V, a maximum output current of 0.75A for each channel
		Kinco-K322-08XR	DO 8 × relay, a maximum output current of 3A for each channel
		Kinco-K322-16XR	DO 16 × relay, a maximum output current of 3A for each channel
		Kinco-K323-08DTX	DIO 8 × DC24V/8 × DC24V Input/output multiplexing, a maximum output current of 0.75A for each channel
	PM323	Kinco-K323-08DR	DI 4 × DC24V, DO 4 × relay, a maximum output current of 3A for each channel
		Kinco-K323-16DR	DI 8 × DC24V, DO 8 × relay, a maximum output current of 3A for each channel
		Kinco-K331-04IV	4 × AI, 0-20mA/4-20mA/ ± 10V/1-5V optional
	PM331	Kinco-K331-04RD	4 × RTD (Pt100/Cu50, 3-wire)
		Kinco-K332-02IV	2 × AO, 0-20mA/4-20mA/ ± 10V/1-5V optional
	PM332	Kinco-K333-03IV	2 × AI, 0-20mA/4-20mA/ ± 10V/1-5V optional, 1 × AO, 0-20mA/4-20mA/ ± 10V/1-5V optional
		Kinco-K333-04IV	2 × AI, 0-20mA/4-20mA/ ± 10V/1-5V optional, 2 × AO, 0-20mA/4-20mA/ ± 10V/1-5V optional

Kinco F1 series PLC module list

Model	Module Name	Order Number	Description
CPU	F1 PLC	F122-D1608T	24V DC power supply, has 24I/O on CPU itself, DI 16*24V DC, DO 8*24V DC, the max output current of each channel is 0.5A, 2 CAN ports, 1 EtherNet port, 2 serial port: one is RS232 or RS485, another is RS232

VFD

VFD

VFD
High-performance vector VFD

- FV100 series
- SV100 series



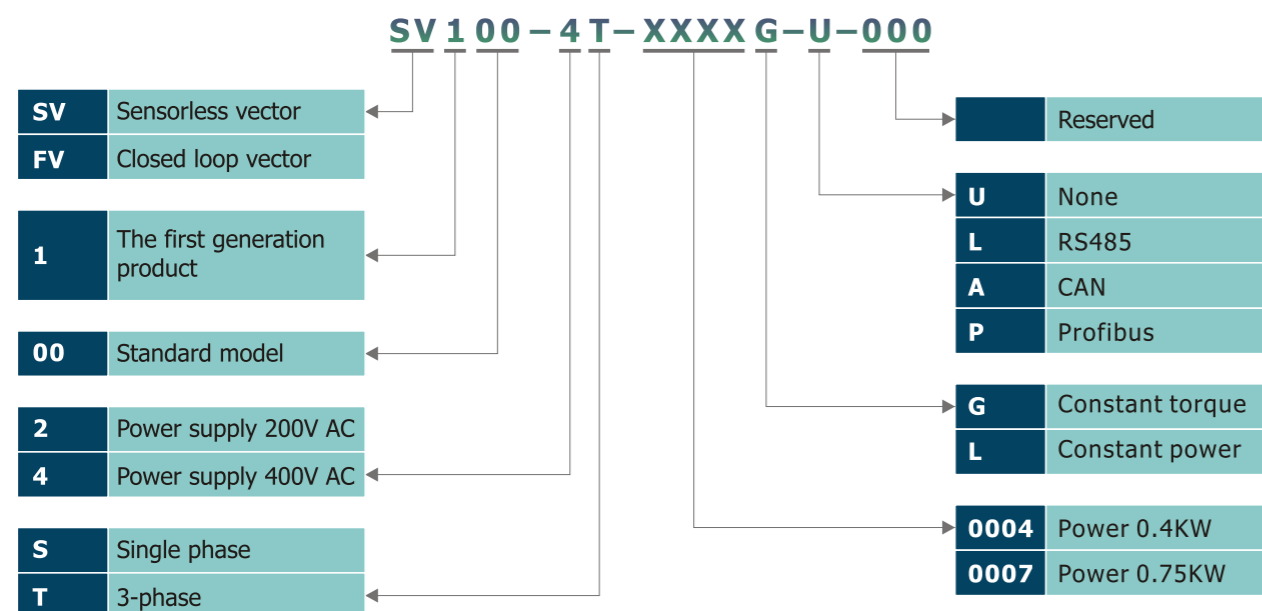
FV100/SV100 series VFD

SV100/FV100, power ranges from 400W~90KW.

Main features:

- Excellent Performance
- Wall-mounted Installation
- All series support RS485 Communication, FV series support CAN bus communication
- Rapid response for custom products and can be custom made easily
- Over-current protection, speed-loss protection, never tripping function; four quadrants max output torque limit function

Selection Guide:



General Product Series

SV100-4T-□□□G、FV100-4T-□□□G 3-phase 400V AC constant torque VFD

Model □V100-4T-□□□G	0.75	1.5	2.2	3.7	5.5	7.5	11	15	18.5	22	30	37	45	55	75	90	
The power of suitable motor (kW)	0.75	1.5	2.2	3.7	5.5	7.5	11	15	18.5	22	30	37	45	55	75	90	
Output	Voltage (V)	3-phase 0~rated input voltage															
	Rated current (A)	2.5	3.8	5.5	9	13	17	24	30	39	45	60	75	91	112	150	176
	Overload capacity	150% 1 Minute, 180% 10 Seconds															
Input	Rated voltage/frequency	3-phase 380V~480V AC; 50Hz/60Hz															
	Allowable voltage range	323V~528V AC; Voltage unbalancedness:≤3%; Allowable frequency fluctuation:±5%															
	Rated current (A)	3.5	6.2	9.2	14.9	21.5	27.9	39	50.3	60	69.3	86	104	124	150	201	160
Brake unit	Built-in										Built-in (optional)				External brake unit		
Protection class	IP20																
Cooling method	Air cooling								Cooling by fan								

SV100-4T-□□□L、FV100-4T-□□□L 3-phase 400V AC constant power VFD

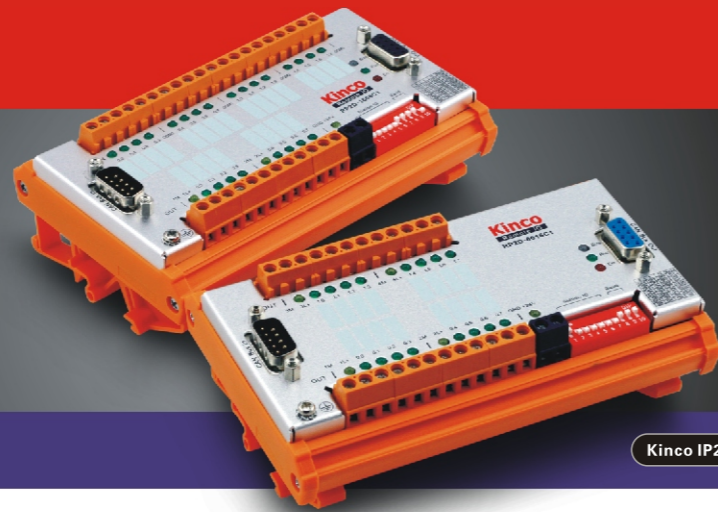
Model □V100-4T-□□□L	1.5	2.2	3.7	5.5	7.5	11	15	18.5	22	30	37	45	55	75	90	
The power of suitable motor (kW)	1.5	2.2	3.7	5.5	7.5	11	15	18.5	22	30	37	45	55	75	90	
Output	Voltage (V)	3-phase 0~rated input voltage														
	Rated current (A)	3.3	5.0	7.5	11	17	22	30	37	44	56	72	91	110	142	176
	Overload capacity	110% 1 Minute, 150% 0.5 Second														
Input	Rated voltage/frequency	3-phase 380V~480V AC; 50Hz/60Hz														
	Allowable voltage range	323V~528V AC; Voltage unbalancedness:≤3%; Allowable frequency fluctuation:±5%														
	Rated current (A)	5.6	8.1	13.5	19.5	26	39	50.3	60	69.3	86	104	124	150	190	235
Brake unit	Built-in										Built-in (optional)					
Protection class	IP20															
Cooling method	Air cooling								Cooling by fan							

SV100-2S-□□□G、FV100-2S-□□□G 2-phase 200V AC constant torque VFD

Model □V100-2S-□□□G	0.4	0.75	1.5	2.2	
The power of suitable motor (kW)	0.4	0.75	1.5	2.2	
Output	Voltage (V)	3-phase 0~rated input voltage			
	Rated current (A)	2.6	4.5	7.5	10
	Overload capacity	150% 1 Minute; 180% 10 Seconds; 200% 0.5 Second; 10 minutes interval (inverse time limit speciality)			
Input	Rated voltage/frequency	Single phase 200V~240V AC; 50Hz/60Hz			
	Allowable voltage range	180V~260V AC; Voltage unbalancedness:≤3%; Allowable frequency fluctuation:±5%			
	Rated current (A)	5.5	9.2	14.5	23
Brake unit	Built-in				
Protection class	IP20				
Cooling method	Air cooling		Cooling by fan		

Note: □V100 means FV100, SV100 series

Field Bus Products



Kinco IP20 RIO



Profibus-DP bus gateway



Kinco RP2 I/O module

Field bus technology is one of the hottest topics in automation industry now. Kinco recognized and tracked that trend for a long time. Kinco has developed products capable of field bus communication. Kinco owns HMI, PLC and servo drivers incorporating field bus connectivity like CANopen, Profibus-DP and Ethernet. Those field bus-ready products can be used in many different applications.



■ MT5000 Series HMI as Field Bus Client Node

- 64K color display, from 5.6" to 15";
- Client node compatible with CANopen 2.0A/B protocol, max. baud rate 1Mbps;
- Client node for Profibus-DP network, baud rate auto-adapt.



■ MT6000 Series as CANopen Master Node

- 64K color TFT display, from 5.6" to 12.1";
- WindowsCE 5.0 OS pre-installed;
- With CoDeSys softPLC from 3S, MT6000 can be used as a CANopen master controller.



■ F1 series CAN master PLC

- High performance 32 bits 520MHz RISC CPU ensure the high calculating speed;
- Supports CANopen 2.0 protocol;
- Supports emergency message, node protection, heartbeat message and can set the start process of slave;
- Supports various baud rate:10K/20K/50K/125K/250K/500K/800K/1M;
- Can manage the error of slave.



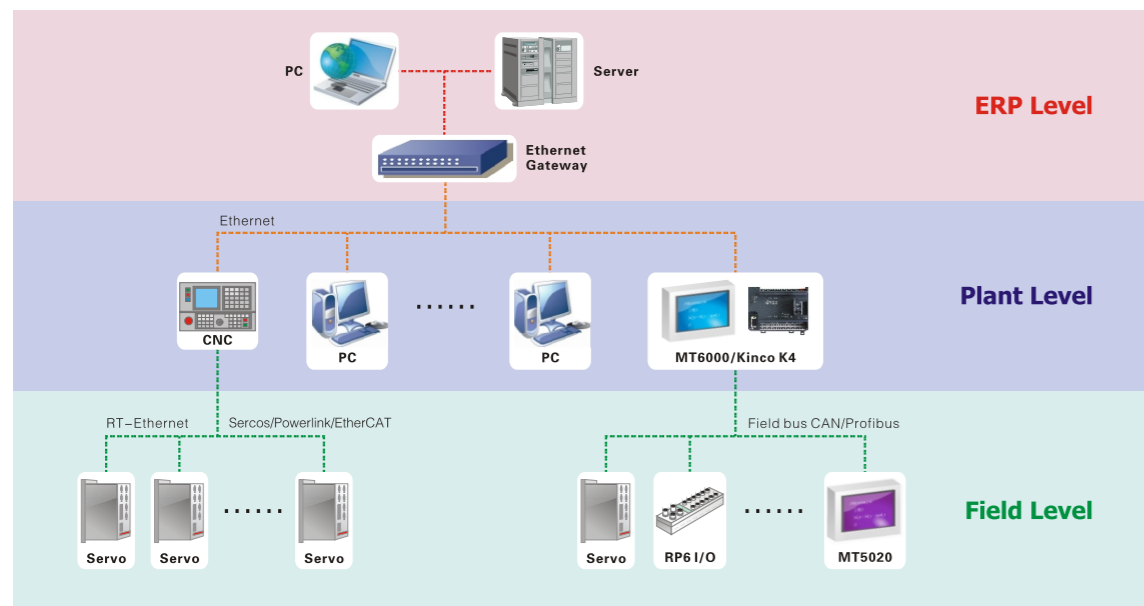
■ CANopen, Profibus Client Node Remote I/O Module

- IP20 and IP67 protection for different environment;
- Communication parameter configuration via hardware;
- Support CANopen 2.0 and Profibus-DP protocol.



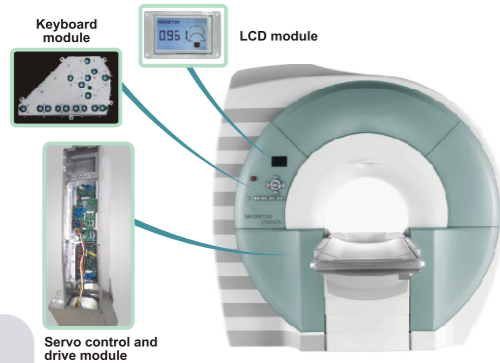
■ ED Series Servo Drivers

- 2-phase/3-phase servo system;
- Support CANopen 2.0 and Profibus-DP protocol;
- Built-in sequence controller.



Kinco, Automation Solution Supplier

Kinco presents you solutions based on automation technology and industry know-how.



Kinco provides important sub-system to a world-famous healthcare equipment manufacturer.

Kinco satisfies the most rigid quality requirement in healthcare industry.

- **System function:** control and drive the motion of patient table for MRI inspection.
- **Features:** Ultra-low RF emission, withstand strong magnetic interference.



Operator Terminal for construction machine

KG/KW series operator terminal, serving famous heavy machine builders all over China.

- **Features:**
 - CAN bus interface;
 - Compatible with protocols of major controllers;
 - Enhanced structure design, withstand shock and extreme temperature;
 - Enhanced EMC design, withstand harsh interference;
 - User-friendly editing software.



KincoCut paper cutter control system

Together with leading paper cutter manufacture in China, Kinco presents advanced cutter control system at competitive cost.

- **Features:**
 - Advanced performance;
 - Optimized CIP3 and CIP4 technology, compatible with printing data format standard;
 - All major components from Kinco, ensure quality and competitive cost.



Tower crane safety controller

Kinco-TB safety controller, compatible with GB/T5031-2008 standard, protect your assets and staff.

- **Features:**
 - Display system critical status and parameters in real time;
 - Alarm when critical status events occur;
 - Record system log;
 - Flexible and easy to be expanded.

Provide Chinese Automation Solutions for Global Customers

